

For Research Use Only

# MACROD1 Recombinant antibody

Catalog Number: 84398-3-RR



## Basic Information

<b>Catalog Number:</b> 84398-3-RR	<b>GenBank Accession Number:</b> BC008316	<b>Purification Method:</b> Protein A purification
<b>Size:</b> 100ul , Concentration: 1000 µg/ml by Nanodrop;	<b>GeneID (NCBI):</b> 28992	<b>CloneNo.:</b> 241506C1
<b>Source:</b> Rabbit	<b>UNIPROT ID:</b> Q9BQ69	<b>Recommended Dilutions:</b> WB 1:2000-1:10000
<b>Isotype:</b> IgG	<b>Full Name:</b> MACRO domain containing 1	
<b>Immunogen Catalog Number:</b> AG34080	<b>Calculated MW:</b> 325 aa, 36 kDa	
	<b>Observed MW:</b> 28 kDa	

## Applications

<b>Tested Applications:</b> WB, ELISA	<b>Positive Controls:</b> WB : COLO 320 cells, HEK-293 cells, HeLa cells, fetal human brain tissue
<b>Species Specificity:</b> human	

## Background Information

MACRO domain containing 1 (MacroD1) is also named as LRP16. MacroD1 is an ADP-ribosylhydrolase 1 that is highly enriched in mitochondria, participating in the pathogenesis of cardiovascular diseases (PMID: 38459256). MacroD1 was recruited to the sites of DNA damage via recognition of ADP-ribosylation at DNA lesions (PMID: 32683309). MacroD1 is highly expressed in human and mouse skeletal muscle (PMID: 29410655). MacroD1 may play an important role in carcinogenesis and/or progression of hormone-dependent cancers by feed-forward mechanism that activates ESR1 transactivation (PMID: 17893710, PMID: 17914104). MacroD1 could be involved in invasive growth by down-regulating CDH1 in endometrial cancer cells (PMID: 17893710).

## Storage

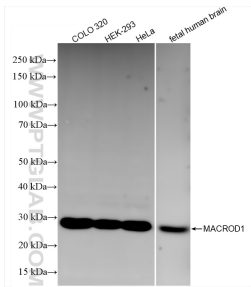
**Storage:**  
Store at -20°C. Stable for one year after shipment.  
**Storage Buffer:**  
PBS with 0.02% sodium azide and 50% glycerol pH 7.3.  
Aliquoting is unnecessary for -20°C storage

\*\*\* 20ul sizes contain 0.1% BSA

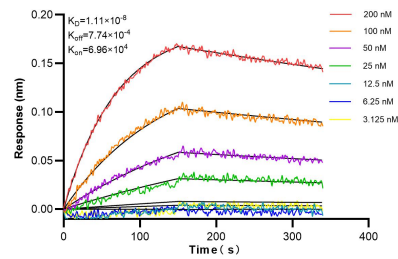
For technical support and original validation data for this product please contact:  
T: 1 (888) 4PTGLAB (1-888-478-4522) (toll free in USA), or 1(312) 455-8498 (outside USA)  
E: [proteintech@ptglab.com](mailto:proteintech@ptglab.com)  
W: [ptglab.com](http://ptglab.com)

This product is exclusively available under Proteintech Group brand and is not available to purchase from any other manufacturer.

## Selected Validation Data



Various lysates were subjected to SDS PAGE followed by western blot with 84398-3-RR (MACROD1 antibody) at dilution of 1:5000 incubated at room temperature for 1.5 hours.



Biolayer interferometry (BLI) kinetic assays of 84398-3-RR against Human MACROD1 were performed. The affinity constant is 11.1 nM.