

For Research Use Only

Serum amyloid P component Recombinant antibody, PBS Only (Detector)

Catalog Number: 84402-1-PBS



Basic Information

Catalog Number: 84402-1-PBS	GenBank Accession Number: BC007058	Purification Method: Protein A purification
Size: 100ug , Concentration: 1 mg/ml by Nanodrop;	GeneID (NCBI): 325	CloneNo.: 241403F5
Source: Rabbit	UNIPROT ID: P02743	
Isotype: IgG	Full Name: amyloid P component, serum	
	Calculated MW: 223 aa, 25 kDa	
	Observed MW: 27-29 kDa	

Applications

Tested Applications:
WB, Sandwich ELISA, Indirect ELISA, Sample test

Species Specificity:
human

Product Information

84402-1-PBS targets Serum amyloid P component as part of a matched antibody pair:

MP01275-1: 84402-2-PBS capture and 84402-1-PBS detection (validated in Sandwich ELISA)

Unconjugated rabbit recombinant monoclonal antibody in PBS only (BSA and azide free) storage buffer at a concentration of 1 mg/mL, ready for conjugation. Created using Proteintech's proprietary in-house recombinant technology. Recombinant production enables unrivalled batch-to-batch consistency, easy scale-up, and future security of supply.

This conjugation ready format makes antibodies ideal for use in many applications including: ELISAs, multiplex assays requiring matched pairs, mass cytometry, and multiplex imaging applications. Antibody use should be optimized by the end user for each application and assay.

Background Information

Serum amyloid P component (SAP), a member of the pentraxin family, is a constitutive serum protein that is synthesized by hepatocytes. It is an acute phase protein, structurally related to C-reactive protein. SAP is a calcium-dependent ligand-binding protein, which can interact with DNA and histones and may scavenge nuclear material released from damaged circulating cells.

Storage

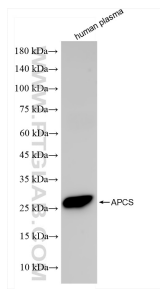
Storage:
Store at -80°C.

Storage Buffer:
PBS Only

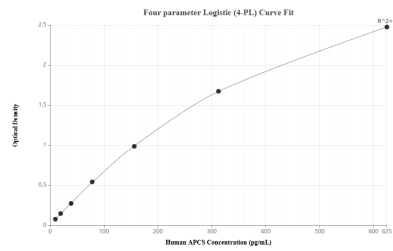
For technical support and original validation data for this product please contact:
T: 1 (888) 4PTGLAB (1-888-478-4522) (toll free in USA), or 1(312) 455-8498 (outside USA)
E: proteintech@ptglab.com
W: ptglab.com

This product is exclusively available under Proteintech Group brand and is not available to purchase from any other manufacturer.

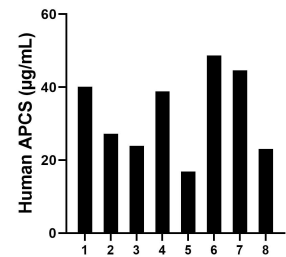
Selected Validation Data



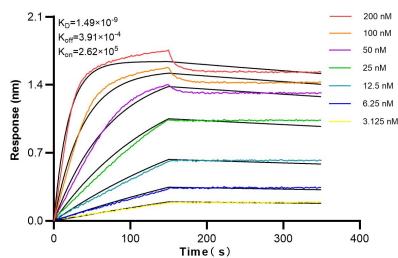
human plasma was subjected to SDS PAGE followed by western blot with 84402-1-RR (Serum amyloid P component antibody) at dilution of 1:5000 incubated at room temperature for 1.5 hours. This data was developed using the same antibody clone with 84402-1-PBS in a different storage buffer formulation.



Sandwich ELISA standard curve of MP01275-1, Human Serum amyloid P component Recombinant Matched Antibody Pair - PBS only. 84402-2-PBS was coated to a plate as the capture antibody and incubated with serial dilutions of standard Eg0528. 84402-1-PBS was HRP conjugated as the detection antibody. Range: 9.77-625 pg/mL



Serum of eight individual healthy human donors was measured. The human Serum amyloid P component concentration of detected samples was determined to be 32.91 µg/mL with a range of 16.86 - 48.68 µg/mL



Bioluminescence resonance energy transfer (BLI) kinetic assays of 84402-1-RR against Human Serum amyloid P component were performed. The affinity constant is 1.49 nM.