

For Research Use Only

LRRC2 Recombinant antibody, PBS Only

Catalog Number: 84404-1-PBS



Basic Information

Catalog Number: 84404-1-PBS	GenBank Accession Number: BC029118	Purification Method: Protein A purification
Size: 100ug , Concentration: 1 mg/ml by Nanodrop;	GeneID (NCBI): 79442	CloneNo.: 241132G1
Source: Rabbit	UNIPROT ID: Q9BYS8	
Isotype: IgG	Full Name: leucine rich repeat containing 2	
Immunogen Catalog Number: AG27830	Calculated MW: 371 aa, 43 kDa	

Applications

Tested Applications:
IHC, IF/ICC, FC (Intra), Indirect ELISA

Species Specificity:
human

Background Information

Leucine Rich Repeat Containing 2 (LRRC2) was found to be localized to the mitochondria in human cells and transcriptionally regulated by the mitochondrial master regulator Pgc-1α. It has been reported that Lrrc2 transcript abundance correlates with that of β-MHC, a canonical marker of cardiac hypertrophy in humans, and experimentally demonstrated an elevation in Lrrc2 transcript in vitro and in vivo rodent models of cardiac hypertrophy as well as in patients with dilated cardiomyopathy. (PMID: 28158196)

Storage

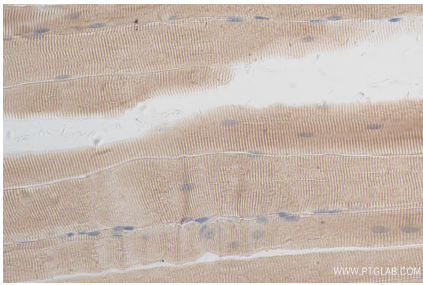
Storage:
Store at -80°C.

Storage Buffer:
PBS Only

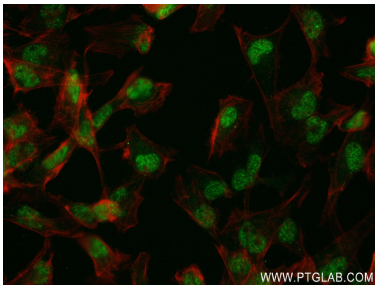
For technical support and original validation data for this product please contact:
T: 1 (888) 4PTGLAB (1-888-478-4522) (toll free in USA), or 1(312) 455-8498 (outside USA)
E: proteintech@ptglab.com
W: ptglab.com

This product is exclusively available under Proteintech Group brand and is not available to purchase from any other manufacturer.

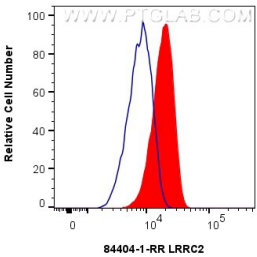
Selected Validation Data



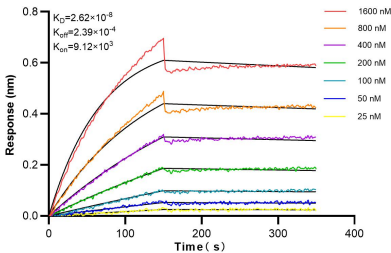
Immunohistochemical analysis of paraffin-embedded mouse skeletal muscle tissue slide using 84404-1-RR (LRRC2 antibody) at dilution of 1:200 (under 40x lens). Heat mediated antigen retrieval with Tris-EDTA buffer (pH 9.0). This data was developed using the same antibody clone with 84404-1-PBS in a different storage buffer formulation.



Immunofluorescent analysis of (4% PFA) fixed U-251 cells using LRRC2 antibody (84404-1-RR, Clone: 241132G1) at dilution of 1:250 and CoraLite® 488-Conjugated Goat Anti-Rabbit IgG(H+L) (SA00013-2), CL594-Phalloidin (red). This data was developed using the same antibody clone with 84404-1-PBS in a different storage buffer formulation.



1x10⁶ U-251 cells were intracellularly stained with 0.25 ug LRRC2 Recombinant antibody (84404-1-RR, Clone:241132G1) and CoraLite® 488-Conjugated Goat Anti-Rabbit IgG(H+L) (SA00013-2)(red), or 0.25 ug Rabbit IgG Isotype Control RecAb (98136-1-RR, Clone: 240953C9) (blue). Cells were fixed and permeabilized with Transcription Factor Staining Buffer Kit (PF00011). This data was developed using the same antibody clone with 84404-1-PBS in a different storage



Biolayer interferometry (BLI) kinetic assays of 84404-1-RR against Human LRRC2 were performed. The affinity constant is 26.2 nM.