

For Research Use Only

CD45(220-577) Recombinant antibody, PBS Only (Capture/Detector)

Catalog Number: 84405-2-PBS



Basic Information

Catalog Number: 84405-2-PBS	GenBank Accession Number: GeneID (NCBI): 5788	Purification Method: Protein A purification
Size: 100ug , Concentration: 1 mg/ml by Nanodrop;	ENSEMBL Gene ID: ENSG00000081237	CloneNo.: 241670F1
Source: Rabbit	Full Name: protein tyrosine phosphatase, receptor type, C	
Isotype: IgG		

Applications

Tested Applications:
Cytometric bead array, Sandwich ELISA, Indirect ELISA, Sample test

Species Specificity:
human

Product Information

84405-2-PBS targets CD45(220-577) as part of a matched antibody pair:

MP01280-2: 84405-2-PBS capture and 84405-1-PBS detection (validated in Cytometric bead array)

MP01280-3: 84405-4-PBS capture and 84405-2-PBS detection (validated in Sandwich ELISA)

Unconjugated rabbit recombinant monoclonal antibody in PBS only (BSA and azide free) storage buffer at a concentration of 1 mg/mL, ready for conjugation. Created using Proteintech's proprietary in-house recombinant technology. Recombinant production enables unrivalled batch-to-batch consistency, easy scale-up, and future security of supply.

This conjugation ready format makes antibodies ideal for use in many applications including: ELISAs, multiplex assays requiring matched pairs, mass cytometry, and multiplex imaging applications. Antibody use should be optimized by the end user for each application and assay.

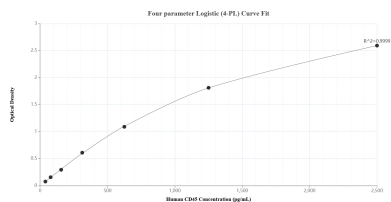
Storage

Storage:
Store at -80°C.
Storage Buffer:
PBS Only

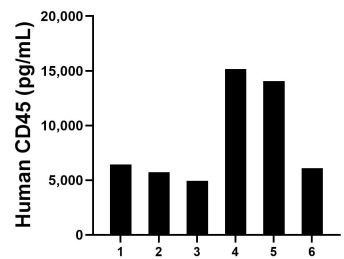
For technical support and original validation data for this product please contact:
T: 1 (888) 4PTGLAB (1-888-478-4522) (toll free in USA), or 1(312) 455-8498 (outside USA)
E: proteintech@ptglab.com
W: ptglab.com

This product is exclusively available under Proteintech Group brand and is not available to purchase from any other manufacturer.

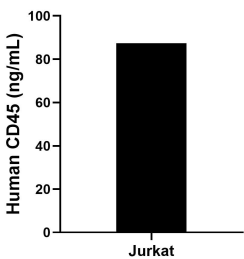
Selected Validation Data



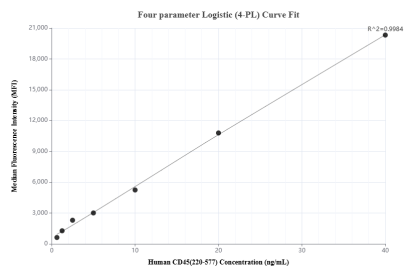
Sandwich ELISA standard curve of MP01280-3, Human CD45 Recombinant Matched Antibody Pair - PBS only. 84405-4-PBS was coated to a plate as the capture antibody and incubated with serial dilutions of standard Eg2486. 84405-2-PBS was HRP conjugated as the detection antibody. Range: 39.1-2500 pg/mL.



Plasma of six individual healthy human donors was measured. The CD45 concentration of detected samples was determined to be 8,737.3 pg/mL with a range of 4,942.4 -15,153.0 pg/mL.



The mean CD45 concentration was determined to be 87.3 ng/mL in Jurkat cell extract based on a 1.5 mg/mL extract load.



Cytometric bead array standard curve of MP01280-2, CD45 Recombinant Matched Antibody Pair, PBS Only. Capture antibody: 84405-2-PBS. Detection antibody: 84405-1-PBS. Standard: Eg2486. Range: 0.625-40 ng/mL.