

For Research Use Only

ACE Recombinant antibody, PBS Only

Catalog Number: 84407-4-PBS



Basic Information

Catalog Number:

84407-4-PBS

Size:

100ug , Concentration: 1 mg/ml by Nanodrop;

Source:

Rabbit

Isotype:

IgG

GenBank Accession Number:

NM_000789.4

GeneID (NCBI):

1636

UNIPROT ID:

P12821-1

Full Name:

angiotensin I converting enzyme (peptidyl-di-peptidase A) 1

Calculated MW:

150kDa

Observed MW:

170-180 kDa

Purification Method:

Protein A purification

CloneNo.:

241763E3

Applications

Tested Applications:

WB, IHC, Indirect ELISA

Species Specificity:

human, mouse, rat

Background Information

ACE(Angiotensin-converting enzyme) is also named as DCP, DCP1 and belongs to the peptidase M2 family. It is involved in catalyzing the conversion of angiotensin I into a physiologically active peptide angiotensin II. ACE also has a glycosidase activity which releases GPI-anchored proteins from the membrane by cleaving the mannose linkage in the GPI moiety. It has 4 isoforms produced by alternative splicing. The full length protein has 15 glycosylation sites and it can show a molecular weight of 170 kDa(PMID:16804085).

Storage

Storage:

Store at -80°C.

Storage Buffer:

PBS Only

For technical support and original validation data for this product please contact:

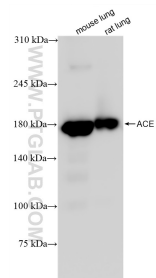
T: 1 (888) 4PTGLAB (1-888-478-4522) (toll free in USA), or 1(312) 455-8498 (outside USA)

E: proteintech@ptglab.com

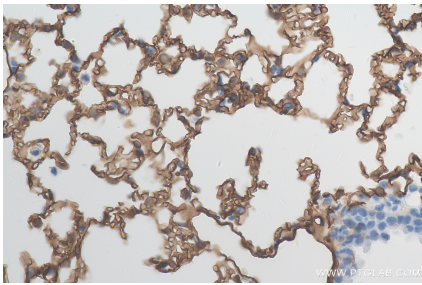
W: ptglab.com

This product is exclusively available under Proteintech Group brand and is not available to purchase from any other manufacturer.

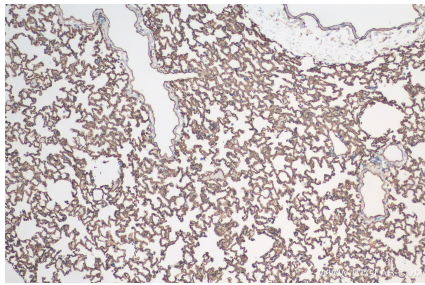
Selected Validation Data



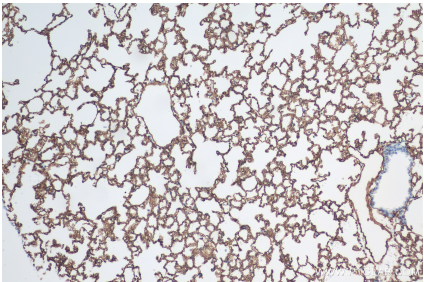
Various lysates were subjected to SDS PAGE followed by western blot with 84407-4-RR (ACE antibody) at dilution of 1:5000 incubated at room temperature for 1.5 hours. This data was developed using the same antibody clone with 84407-4-PBS in a different storage buffer formulation.



Immunohistochemical analysis of paraffin-embedded mouse lung tissue slide using 84407-4-RR (ACE antibody) at dilution of 1:1000 (under 40x lens). Heat mediated antigen retrieval with Tris-EDTA buffer (pH 9.0). This data was developed using the same antibody clone with 84407-4-PBS in a different storage buffer formulation.



Immunohistochemical analysis of paraffin-embedded rat lung tissue slide using 84407-4-RR (ACE antibody) at dilution of 1:1000 (under 10x lens). Heat mediated antigen retrieval with Tris-EDTA buffer (pH 9.0). This data was developed using the same antibody clone with 84407-4-PBS in a different storage buffer formulation.



Immunohistochemical analysis of paraffin-embedded mouse lung tissue slide using 84407-4-RR (ACE antibody) at dilution of 1:1000 (under 10x lens). Heat mediated antigen retrieval with Tris-EDTA buffer (pH 9.0). This data was developed using the same antibody clone with 84407-4-PBS in a different storage buffer formulation.