

For Research Use Only

MLL4 Recombinant antibody, PBS Only (Capture)

Catalog Number: 84410-1-PBS



Basic Information

Catalog Number: 84410-1-PBS	GenBank Accession Number: BC009337	Purification Method: Protein A purification
Size: 100ug , Concentration: 1 mg/ml by Nanodrop;	GeneID (NCBI): 9757	CloneNo.: 241819A4
Source: Rabbit	UNIPROT ID: Q9UMN6	
Isotype: IgG	Full Name: myeloid/lymphoid or mixed-lineage leukemia 4	
Immunogen Catalog Number: AG35385	Observed MW: 294 kDa	

Applications

Tested Applications:
WB, Cytometric bead array, Sandwich ELISA, Indirect ELISA, Sample test

Species Specificity:
human, rat

Product Information

84410-1-PBS targets MLL4 as part of a matched antibody pair:

MP01298-1: 84410-1-PBS capture and 84410-2-PBS detection (validated in Cytometric bead array, Sandwich ELISA)

Unconjugated rabbit recombinant monoclonal antibody in PBS only (BSA and azide free) storage buffer at a concentration of 1 mg/mL, ready for conjugation. Created using Proteintech's proprietary in-house recombinant technology. Recombinant production enables unrivalled batch-to-batch consistency, easy scale-up, and future security of supply.

This conjugation ready format makes antibodies ideal for use in many applications including: ELISAs, multiplex assays requiring matched pairs, mass cytometry, and multiplex imaging applications. Antibody use should be optimized by the end user for each application and assay.

Background Information

MLL4, also known as KMT2B, which is an essential subunit of the H3K4 methylation complexes, regulates cell type-specific transcriptional programs through enhancer activation. Taspase 1 mediates cleavage of the MLL protein, generating cleavage products.

Storage

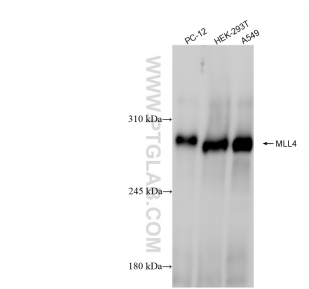
Storage:
Store at -80°C.

Storage Buffer:
PBS only

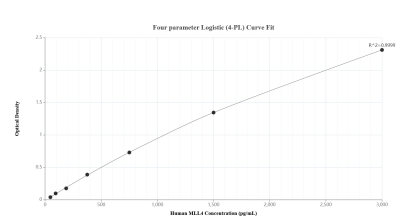
For technical support and original validation data for this product please contact:
T: 1 (888) 4PTGLAB (1-888-478-4522) (toll free in USA), or 1(312) 455-8498 (outside USA)
E: proteintech@ptglab.com
W: ptglab.com

This product is exclusively available under Proteintech Group brand and is not available to purchase from any other manufacturer.

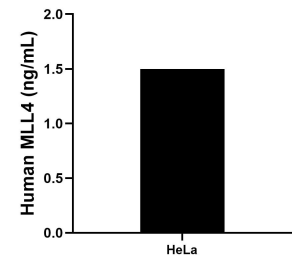
Selected Validation Data



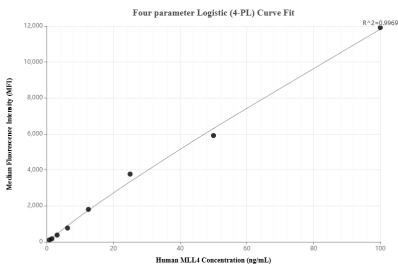
Various lysates were subjected to SDS PAGE followed by western blot with 84410-1-RR (MLL4 antibody) at dilution of 1:10000 incubated at room temperature for 1.5 hours. This data was developed using the same antibody clone with 84410-1-PBS in a different storage buffer formulation.



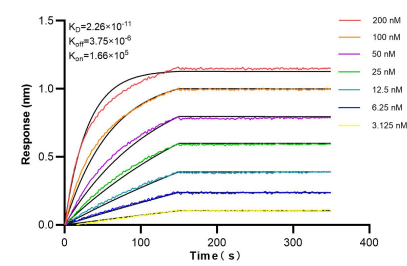
Sandwich ELISA standard curve of MP01298-1, Human MLL4 Recombinant Matched Antibody Pair - PBS only. 84410-1-PBS was coated to a plate as the capture antibody and incubated with serial dilutions of standard Ag35385. 84410-2-PBS was HRP conjugated as the detection antibody. Range: 46.9-3000 pg/mL



The mean MLL4 concentration was determined to be 1.5 ng/mL in HeLa cell extract based on a 1.8 mg/mL extract load.



Cytometric bead array standard curve of MP01298-1, MLL4 Recombinant Matched Antibody Pair, PBS Only. Capture antibody: 84410-1-PBS. Detection antibody: 84410-2-PBS. Standard: Ag35385. Range: 0.781-100 ng/mL



Biolayer interferometry (BLI) kinetic assays of 84410-1-RR against Human MLL4 were performed. The affinity constant is 22.6 pM.