

For Research Use Only

IL1A Recombinant antibody, PBS Only (Capture)

Catalog Number: 84411-2-PBS



Basic Information

Catalog Number: 84411-2-PBS	GenBank Accession Number: BC013142	Purification Method: Protein A purification
Size: 100ug, Concentration: 1 mg/ml by Nanodrop;	GeneID (NCBI): 3552	CloneNo.: 241752E8
Source: Rabbit	UNIPROT ID: P01583	
Isotype: IgG	Full Name: interleukin 1, alpha	
Immunogen Catalog Number: HZ-1320	Calculated MW: 271 aa, 31 kDa	

Applications

Tested Applications:
Cytometric bead array, Sandwich ELISA, Indirect ELISA, Sample test

Species Specificity:
human

Product Information

84411-2-PBS targets IL1A as part of a matched antibody pair:

MP01289-1: 84411-2-PBS capture and 84411-1-PBS detection (validated in Cytometric bead array)

MP01289-3: 84411-2-PBS capture and 84411-3-PBS detection (validated in Sandwich ELISA)

Unconjugated rabbit recombinant monoclonal antibody in PBS only (BSA and azide free) storage buffer at a concentration of 1 mg/mL, ready for conjugation. Created using Proteintech's proprietary in-house recombinant technology. Recombinant production enables unrivalled batch-to-batch consistency, easy scale-up, and future security of supply.

This conjugation ready format makes antibodies ideal for use in many applications including: ELISAs, multiplex assays requiring matched pairs, mass cytometry, and multiplex imaging applications. Antibody use should be optimized by the end user for each application and assay.

Storage

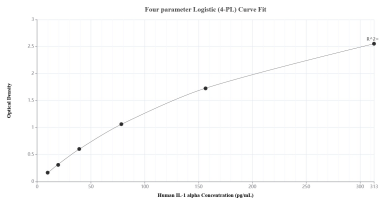
Storage:
Store at -80°C.

Storage Buffer:
PBS only, pH7.3

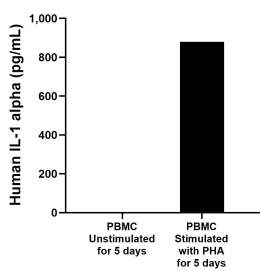
For technical support and original validation data for this product please contact:
T: 1 (888) 4PTGLAB (1-888-478-4522) (toll free in USA), or 1(312) 455-8498 (outside USA)
E: proteintech@ptglab.com
W: ptglab.com

This product is exclusively available under Proteintech Group brand and is not available to purchase from any other manufacturer.

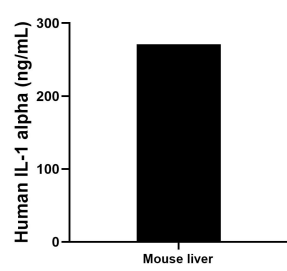
Selected Validation Data



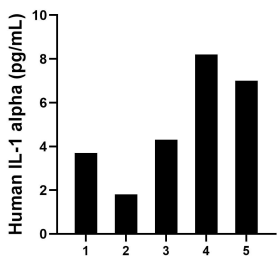
Sandwich ELISA standard curve of MP01289-3, Human IL-1 alpha Recombinant Matched Antibody Pair - PBS only. 84411-2-PBS was coated to a plate as the capture antibody and incubated with serial dilutions of standard HZ-1320. 84411-3-PBS was HRP conjugated as the detection antibody. Range: 9.77-313 pg/mL



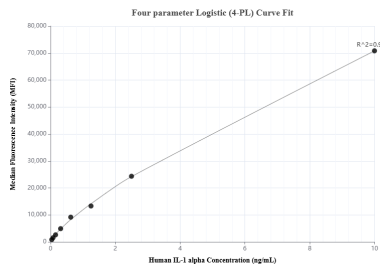
Human peripheral blood mononuclear cells (PBMC) were cultured unstimulated or stimulated with 10 μ g/mL PHA for 5 days. The mean IL-1 alpha concentration was determined to be 2.1 pg/mL in unstimulated PBMC supernatant, 880.0 pg/mL in PHA stimulated PBMC supernatant.



The mean IL-1 alpha concentration was determined to be 271.0 ng/mL in mouse liver tissue extract based on a 3.7 mg/mL extract load.



Serum of five individual healthy human donors was measured. The IL-1 alpha concentration of detected samples was determined to be 5.0 pg/mL with a range of 1.8-8.2 pg/mL



Cytometric bead array standard curve of MP01289-1, IL-1 alpha Recombinant Matched Antibody Pair, PBS Only. Capture antibody: 84411-2-PBS. Detection antibody: 84411-1-PBS. Standard: HZ-1320. Range: 0.039-10 ng/mL