

For Research Use Only

Mouse Thrombomodulin Recombinant antibody, PBS Only (Detector)

Catalog Number: 84412-1-PBS



Basic Information

Catalog Number: 84412-1-PBS	GenBank Accession Number: NM_009378.3	Purification Method: Protein A purification
Size: 100ug , Concentration: 1 mg/ml by Nanodrop;	GeneID (NCBI): 21824	CloneNo.: 241730A6
Source: Rabbit	UNIPROT ID: P15306	
Isotype: IgG	Full Name: thrombomodulin	
	Calculated MW: 62kDa	

Applications

Tested Applications:
Cytometric bead array, Sandwich ELISA, Indirect ELISA, Sample test

Species Specificity:
mouse

Product Information

84412-1-PBS targets Thrombomodulin as part of a matched antibody pair:

MP01300-2: 84412-3-PBS capture and 84412-1-PBS detection (validated in Cytometric bead array, Sandwich ELISA)

Unconjugated rabbit recombinant monoclonal antibody in PBS only (BSA and azide free) storage buffer at a concentration of 1 mg/mL, ready for conjugation. Created using Proteintech's proprietary in-house recombinant technology. Recombinant production enables unrivalled batch-to-batch consistency, easy scale-up, and future security of supply.

This conjugation ready format makes antibodies ideal for use in many applications including: ELISAs, multiplex assays requiring matched pairs, mass cytometry, and multiplex imaging applications. Antibody use should be optimized by the end user for each application and assay.

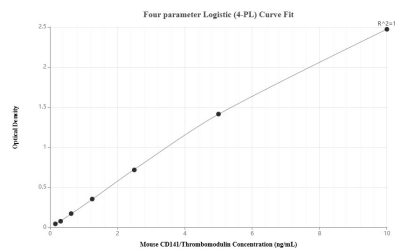
Storage

Storage:
Store at -80°C.
Storage Buffer:
PBS Only

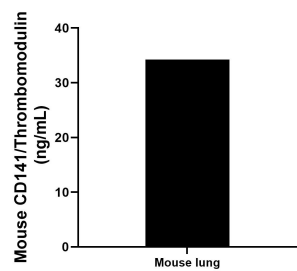
For technical support and original validation data for this product please contact:
T: 1 (888) 4PTGLAB (1-888-478-4522) (toll free in USA), or 1(312) 455-8498 (outside USA)
E: proteintech@ptglab.com
W: ptglab.com

This product is exclusively available under Proteintech Group brand and is not available to purchase from any other manufacturer.

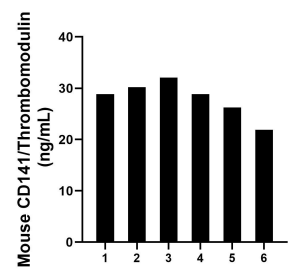
Selected Validation Data



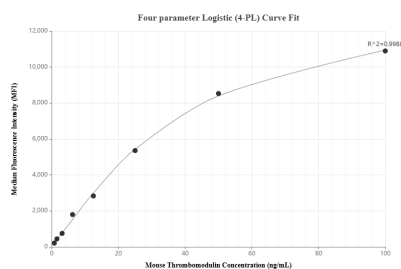
Sandwich ELISA standard curve of MP01300-2, Mouse CD141/Thrombomodulin Recombinant Matched Antibody Pair - PBS only. 84412-3-PBS was coated to a plate as the capture antibody and incubated with serial dilutions of standard Eg1139. 84412-1-PBS was HRP conjugated as the detection antibody. Range: 0.156-10 ng/mL



Mouse lung, cut into 1-2 mm pieces, was cultured for 4 days in 25-30 mL of RPMI supplemented with 10% fetal bovine serum. The cell culture supernate was removed, assayed for CD141/Thrombomodulin, and measured 34.22 ng/mL



Serum of six mice was measured. The mouse CD141/Thrombomodulin concentration of detected samples was determined to be 28.01 ng/mL with a range of 21.90 - 32.07 ng/mL



Cytometric bead array standard curve of MP01300-2, MOUSE CD141/Thrombomodulin Recombinant Matched Antibody Pair, PBS Only. Capture antibody: 84412-3-PBS. Detection antibody: 84412-1-PBS. Standard: Eg1139. Range: 0.781-100 ng/mL