

For Research Use Only

CCL20/MIP-3 alpha Recombinant antibody

Catalog Number: 84413-3-RR



Basic Information

Catalog Number: 84413-3-RR	GenBank Accession Number: NM_004591.3	Purification Method: Protein A purification
Size: 100ul, Concentration: 1000 µg/ml by Nanodrop;	GeneID (NCBI): 6364	CloneNo.: 241694B4
Source: Rabbit	UNIPROT ID: P78556-1	Recommended Dilutions: WB 1:5000-1:50000 IHC 1:1250-1:5000
Isotype: IgG	Full Name: chemokine (C-C motif) ligand 20	
	Calculated MW: 11kDa	
	Observed MW: 11 kDa	

Applications

Tested Applications:

WB, IHC, ELISA

Species Specificity:

human, mouse

Note-IHC: suggested antigen retrieval with TE buffer pH 9.0; (*) Alternatively, antigen retrieval may be performed with citrate buffer pH 6.0

Positive Controls:

WB : THP-1 cells, RAW 264.7 cells, HepG2 cells, HuH-7 cells, SMMC-7721 cells

IHC : human colon tissue,

Background Information

CCL20, also known as macrophage infiltrating factor protein 3a, is a C-C chemokine that specifically binds to the receptor CCR6. CCL20 is produced in various tissues and by a wide range of immune cells, including neutrophils, natural killer cells, T-helper type 17 (Th17) cells, B cells, and various antigen-presenting cells, such as dendritic cells (DCs), Langerhans cells, and macrophages. Increased expression of CCL20 is likely involved in the increased recruitment of dendritic cells observed in fibroinflammatory diseases such as chronic obstructive pulmonary disease (COPD). CCL20 expression is increased by the proinflammatory cytokine IL-1 beta.

Storage

Storage:

Store at -20°C. Stable for one year after shipment.

Storage Buffer:

PBS with 0.02% sodium azide and 50% glycerol pH 7.3.

Aliquoting is unnecessary for -20°C storage

*** 20ul sizes contain 0.1% BSA

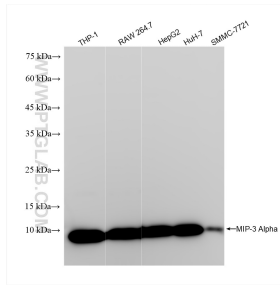
For technical support and original validation data for this product please contact:

T: 1 (888) 4PTGLAB (1-888-478-4522) (toll free in USA), or 1(312) 455-8498 (outside USA)

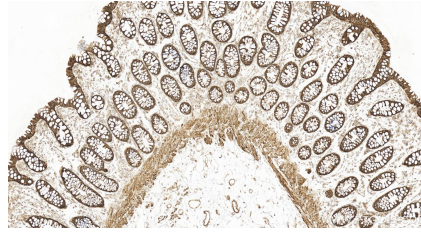
E: proteintech@ptglab.com
W: ptglab.com

This product is exclusively available under Proteintech Group brand and is not available to purchase from any other manufacturer.

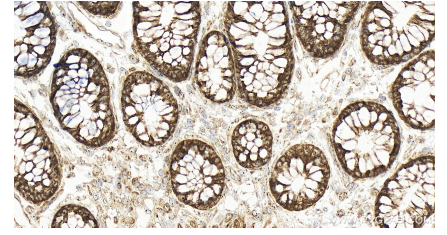
Selected Validation Data



Various lysates were subjected to SDS PAGE followed by western blot with 84413-3-RR (CCL20/MIP-3 alpha antibody) at dilution of 1:10000 incubated at room temperature for 1.5 hours.



Immunohistochemical analysis of paraffin-embedded human colon tissue slide using 84413-3-RR (CCL20/MIP-3 alpha antibody) at dilution of 1:2500 (under 10x lens). Heat mediated antigen retrieval with Tris-EDTA buffer (pH 9.0).



Immunohistochemical analysis of paraffin-embedded human colon tissue slide using 84413-3-RR (CCL20/MIP-3 alpha antibody) at dilution of 1:2500 (under 40x lens). Heat mediated antigen retrieval with Tris-EDTA buffer (pH 9.0).