

For Research Use Only

IL-4RA/CD124 Recombinant antibody, PBS Only (Capture/Detector)

Catalog Number: 84414-2-PBS



Basic Information

| | | |
|---|---|---|
| Catalog Number: 84414-2-PBS | GenBank Accession Number: NM_000418.4 | Purification Method: Protein A purification |
| Size: 100ug , Concentration: 1 mg/ml by Nanodrop; | GeneID (NCBI): 3566 | CloneNo.: 241824D5 |
| Source: Rabbit | UNIPROT ID: P24394-1 | |
| Isotype: IgG | Full Name: interleukin 4 receptor | |
| | Calculated MW: 90 kDa | |

Applications

Tested Applications:
Cytometric bead array, Sandwich ELISA, Indirect ELISA, Sample test

Species Specificity:
human

Product Information

84414-2-PBS targets IL-4RA/CD124 as part of a matched antibody pair:

MP01282-1: 84414-2-PBS capture and 84414-4-PBS detection (validated in Cytometric bead array)

MP01282-2: 84414-2-PBS capture and 84414-3-PBS detection (validated in Cytometric bead array)

MP01282-3: 84414-1-PBS capture and 84414-2-PBS detection (validated in Cytometric bead array)

MP01282-4: 84414-7-PBS capture and 84414-2-PBS detection (validated in Sandwich ELISA)

Unconjugated rabbit recombinant monoclonal antibody in PBS only (BSA and azide free) storage buffer at a concentration of 1 mg/mL, ready for conjugation. Created using Proteintech's proprietary in-house recombinant technology. Recombinant production enables unrivalled batch-to-batch consistency, easy scale-up, and future security of supply.

This conjugation ready format makes antibodies ideal for use in many applications including: ELISAs, multiplex assays requiring matched pairs, mass cytometry, and multiplex imaging applications. Antibody use should be optimized by the end user for each application and assay.

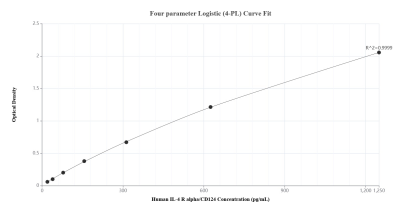
Storage

Storage:
Store at -80°C.
Storage Buffer:
PBS Only

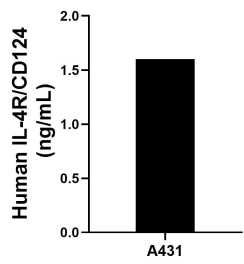
For technical support and original validation data for this product please contact:
T: 1 (888) 4PTGLAB (1-888-478-4522) (toll free in USA), or 1(312) 455-8498 (outside USA)
E: proteintech@ptglab.com
W: ptglab.com

This product is exclusively available under Proteintech Group brand and is not available to purchase from any other manufacturer.

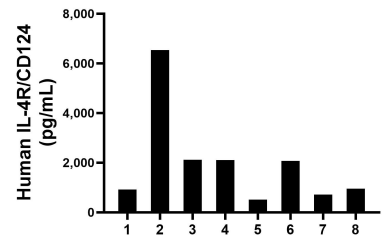
Selected Validation Data



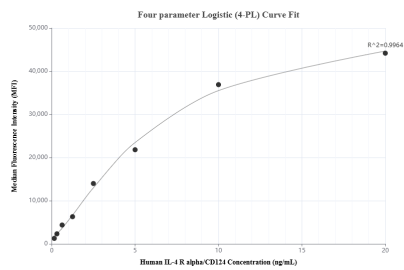
Sandwich ELISA standard curve of MP01282-4, Human IL-4RA/CD124 Recombinant Matched Antibody Pair - PBS only. 84414-7-PBS was coated to a plate as the capture antibody and incubated with serial dilutions of standard Eg1684. 84414-2-PBS was HRP conjugated as the detection antibody. Range: 19.5-1250 pg/mL



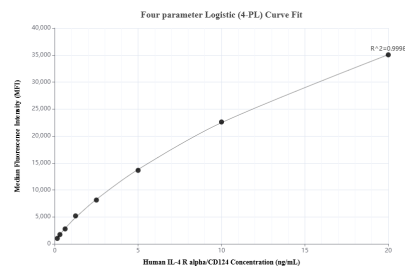
The mean IL-4RA/CD124 concentration was determined to be 1.60 ng/mL in A431 cell extract based on a 1.3 mg/mL extract load.



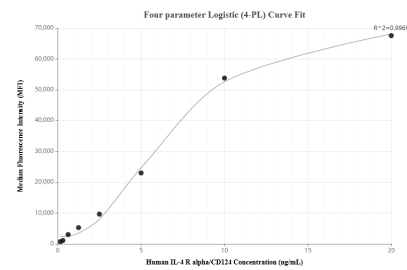
Serum of eight individual healthy human donors was measured. The IL-4RA/CD124 concentration of detected samples was determined to be 1,993.2 pg/mL with a range of 517.2-6,543.1 pg/mL



Cytometric bead array standard curve of MP01282-1, IL-4RA/CD124 Recombinant Matched Antibody Pair, PBS Only. Capture antibody: 84414-2-PBS. Detection antibody: 84414-4-PBS. Standard: Eg1684. Range: 0.156-20 ng/mL



Cytometric bead array standard curve of MP01282-2, IL-4R/IL-4RA/CD124 Recombinant Matched Antibody Pair, PBS Only. Capture antibody: 84422-3-PBS. Detection antibody: 84422-2-PBS. Standard: Eg1684. Range: 0.156-20 ng/mL



Cytometric bead array standard curve of MP01282-3, IL-4 R alpha/IL-4RA/CD124 Recombinant Matched Antibody Pair, PBS Only. Capture antibody: 84422-5-PBS. Detection antibody: 84422-2-PBS. Standard: Eg1684. Range: 0.156-20 ng/mL