

For Research Use Only

IFNGR1 Recombinant antibody

Catalog Number: 84415-7-RR



Basic Information

Catalog Number:

84415-7-RR

Size:

100ul, Concentration: 1000 µg/ml by Nanodrop;

Source:

Rabbit

Isotype:

IgG

GenBank Accession Number:

NM_010511.3

GeneID (NCBI):

15979

UNIPROT ID:

P15261

Full Name:

interferon gamma receptor 1

Calculated MW:

52kDa

Observed MW:

90 kDa

Purification Method:

Protein A purification

CloneNo.:

241832F4

Recommended Dilutions:

WB 1:1000-1:8000

Applications

Tested Applications:

WB, ELISA

Species Specificity:

mouse

Positive Controls:

WB : CTLL-2 cells, C2C12 cells

Background Information

Interferon-gamma (IFN- γ) is a cytokine critical for innate and adaptive immunity against viral and intracellular bacterial infections and for tumor control. Cellular responses to IFN- γ are activated through its interaction with a heterodimeric receptor consisting of two subunits, IFNGR1 (CD119) and IFNGR2. IFNGR1 is the ligand-binding subunit which binds IFN- γ with high affinity, whereas IFNGR2 serves as the accessory subunit. Two subunits bind one IFN- γ dimer. Defects in IFNGR1 are a cause of mendelian susceptibility to mycobacterial disease (MSMD), also known as familial disseminated atypical mycobacterial infection. (PMID: 17981204; 946248; 10888113)

Storage

Storage:

Store at -20°C. Stable for one year after shipment.

Storage Buffer:

PBS with 0.02% sodium azide and 50% glycerol pH 7.3.

Aliquoting is unnecessary for -20°C storage

*** 20ul sizes contain 0.1% BSA

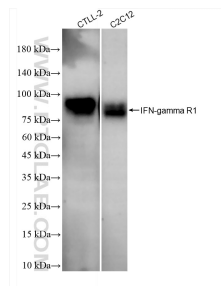
For technical support and original validation data for this product please contact:

T: 1 (888) 4PTGLAB (1-888-478-4522) (toll free in USA), or 1(312) 455-8498 (outside USA)

E: proteintech@ptglab.com
W: ptglab.com

This product is exclusively available under Proteintech Group brand and is not available to purchase from any other manufacturer.

Selected Validation Data



Various lysates were subjected to SDS PAGE followed by western blot with 84415-7-RR (IFN-gamma R1 antibody) at dilution of 1:4000 incubated at room temperature for 1.5 hours.