

For Research Use Only

Mouse CD157 Recombinant antibody, PBS Only (Capture/Detector)

Catalog Number: 84417-4-PBS



Basic Information

Catalog Number: 84417-4-PBS	GenBank Accession Number: GeneID (NCBI): 12182	Purification Method: Protein A purification
Size: 100ug , Concentration: 1 mg/ml by Nanodrop;	UNIPROT ID: Q64277	CloneNo.: 241822H1
Source: Rabbit	Full Name: bone marrow stromal cell antigen 1	
Isotype: IgG	Calculated MW: 35kDa	
Immunogen Catalog Number: EG1528		

Applications

Tested Applications:
Cytometric bead array, Sandwich ELISA, Indirect ELISA,
Sample test

Species Specificity:
mouse

Product Information

84417-4-PBS targets CD157 as part of a matched antibody pair:

MP01303-1: 84417-1-PBS capture and 84417-4-PBS detection (validated in Cytometric bead array)

MP01303-2: 84417-2-PBS capture and 84417-4-PBS detection (validated in Cytometric bead array)

MP01303-3: 84417-3-PBS capture and 84417-4-PBS detection (validated in Cytometric bead array)

MP01303-4: 84417-4-PBS capture and 84417-1-PBS detection (validated in Sandwich ELISA)

Unconjugated rabbit recombinant monoclonal antibody in PBS only (BSA and azide free) storage buffer at a concentration of 1 mg/mL, ready for conjugation. Created using Proteintech's proprietary in-house recombinant technology. Recombinant production enables unrivalled batch-to-batch consistency, easy scale-up, and future security of supply.

This conjugation ready format makes antibodies ideal for use in many applications including: ELISAs, multiplex assays requiring matched pairs, mass cytometry, and multiplex imaging applications. Antibody use should be optimized by the end user for each application and assay.

Storage

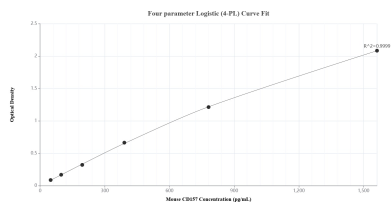
Storage:
Store at -80°C.

Storage Buffer:
PBS only, pH7.3

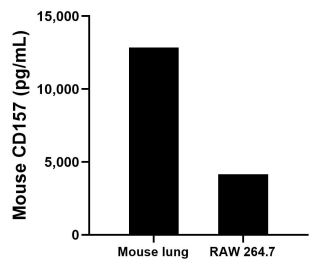
For technical support and original validation data for this product please contact:
T: 1 (888) 4PTGLAB (1-888-478-4522) (toll free in USA), or 1(312) 455-8498 (outside USA)
E: proteintech@ptglab.com
W: ptglab.com

This product is exclusively available under Proteintech Group brand and is not available to purchase from any other manufacturer.

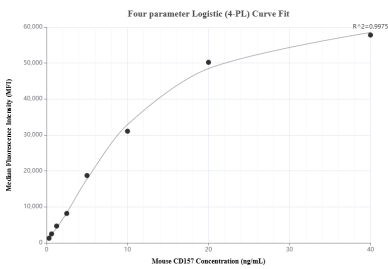
Selected Validation Data



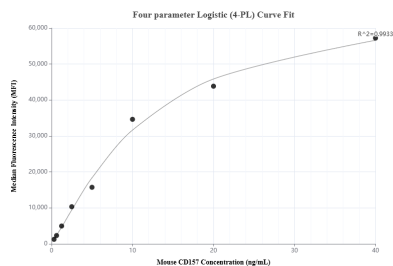
Sandwich ELISA standard curve of MP01303-4, Mouse CD157 Recombinant Matched Antibody Pair - PBS only. 84417-4-PBS was coated to a plate as the capture antibody and incubated with serial dilutions of standard Eg1528. 84417-1-PBS was HRP conjugated as the detection antibody. Range: 48.8-1563 pg/mL.



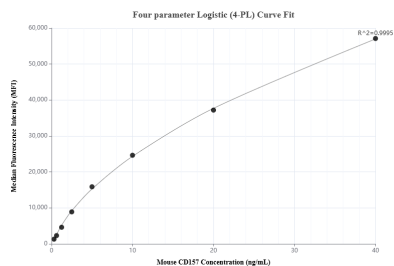
The mean CD157 concentration was determined to be 12,854.1 pg/mL in mouse lung tissue extract based on a 1.6 mg/mL extract load and 4,152.4 pg/mL in RAW 264.7 cell extract based on a 4.8 mg/mL extract load.



Cytometric bead array standard curve of MP01303-1, MOUSE CD157 Recombinant Matched Antibody Pair, PBS Only. Capture antibody: 84417-1-PBS. Detection antibody: 84417-4-PBS. Standard: Eg1528. Range: 0.313-40 ng/mL.



Cytometric bead array standard curve of MP01303-2, MOUSE CD157 Recombinant Matched Antibody Pair, PBS Only. Capture antibody: 84417-2-PBS. Detection antibody: 84417-4-PBS. Standard: Eg1528. Range: 0.313-40 ng/mL.



Cytometric bead array standard curve of MP01303-3, MOUSE CD157 Recombinant Matched Antibody Pair, PBS Only. Capture antibody: 84417-3-PBS. Detection antibody: 84417-4-PBS. Standard: Eg1528. Range: 0.313-40 ng/mL.