

For Research Use Only

# PSMA5 Recombinant antibody, PBS Only (Detector)

Catalog Number: 84424-1-PBS



## Basic Information

<b>Catalog Number:</b> 84424-1-PBS	<b>GenBank Accession Number:</b> BC103751	<b>Purification Method:</b> Protein A purification
<b>Size:</b> 100ug , Concentration: 1 mg/ml by Nanodrop;	<b>GeneID (NCBI):</b> 5686	<b>CloneNo.:</b> 241629A11
<b>Source:</b> Rabbit	<b>UNIPROT ID:</b> P28066	
<b>Isotype:</b> IgG	<b>Full Name:</b> proteasome (prosome, macropain) subunit, alpha type, 5	
<b>Immunogen Catalog Number:</b> AG34928	<b>Calculated MW:</b> 241 aa, 26 kDa	
	<b>Observed MW:</b> 26 kDa	

## Applications

**Tested Applications:**  
WB, Cytometric bead array, Indirect ELISA

**Species Specificity:**  
human, mouse

## Product Information

84424-1-PBS targets PSMA5 as part of a matched antibody pair.

MP01286-1: 84424-2-PBS capture and 84424-1-PBS detection (validated in Cytometric bead array)

MP01286-3: 84424-4-PBS capture and 84424-1-PBS detection (validated in Cytometric bead array)

Unconjugated rabbit recombinant monoclonal antibody in PBS only (BSA and azide free) storage buffer at a concentration of 1 mg/mL, ready for conjugation. Created using Proteintech's proprietary in-house recombinant technology. Recombinant production enables unrivalled batch-to-batch consistency, easy scale-up, and future security of supply.

This conjugation ready format makes antibodies ideal for use in many applications including: ELISAs, multiplex assays requiring matched pairs, mass cytometry, and multiplex imaging applications. Antibody use should be optimized by the end user for each application and assay.

## Background Information

Proteasome subunit alpha type-5(PSMA5) is a component of the 20S core proteasome complex involved in the proteolytic degradation of most intracellular proteins. This complex plays numerous essential roles within the cell by associating with different regulatory particles. It binds to two 19S regulatory particles(RP) to form the 26S proteasome, an ATP-dependent multisubunit protease that degrades polyubiquitinated proteins into small peptides. (PMID: 26661102)

## Storage

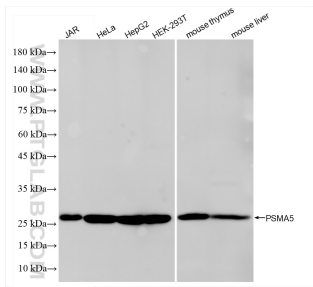
**Storage:**  
Store at -80°C.

**Storage Buffer:**  
PBS Only

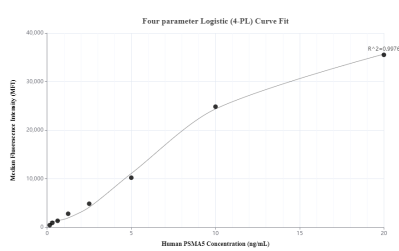
For technical support and original validation data for this product please contact:  
T: 1 (888) 4PTGLAB (1-888-478-4522) (toll free in USA), or 1(312) 455-8498 (outside USA)  
E: [proteintech@ptglab.com](mailto:proteintech@ptglab.com)  
W: [ptglab.com](http://ptglab.com)

This product is exclusively available under Proteintech Group brand and is not available to purchase from any other manufacturer.

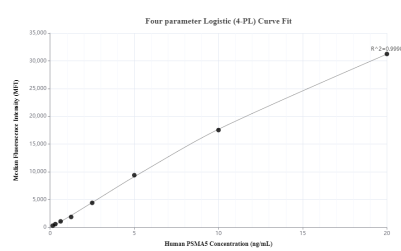
## Selected Validation Data



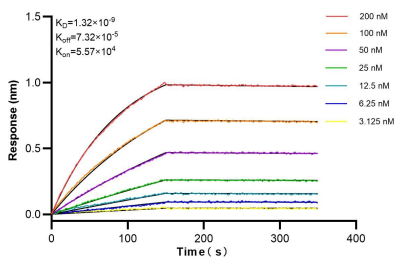
Various lysates were subjected to SDS PAGE followed by western blot with 84424-1-RR (PSMA5 antibody) at dilution of 1:10000 incubated at room temperature for 1.5 hours. This data was developed using the same antibody clone with 84424-1-PBS in a different storage buffer formulation.



Cytometric bead array standard curve of MP01286-1, PSMA5 Recombinant Matched Antibody Pair, PBS Only. Capture antibody: 84424-2-PBS. Detection antibody: 84424-1-PBS. Standard: Ag34928. Range: 0.156-20 ng/mL.



Cytometric bead array standard curve of MP01286-3, PSMA5 Recombinant Matched Antibody Pair, PBS Only. Capture antibody: 84424-4-PBS. Detection antibody: 84424-1-PBS. Standard: Ag34928. Range: 0.156-20 ng/mL.



Biolayer interferometry (BLI) kinetic assays of 84424-1-RR against Human PSMA5 were performed. The affinity constant is 1.32 nM.