

For Research Use Only

PSMA5 Recombinant antibody, PBS Only (Capture)

Catalog Number: 84424-4-PBS



Basic Information

Catalog Number: 84424-4-PBS	GenBank Accession Number: BC103751	Purification Method: Protein A purification
Size: 100ug , Concentration: 1 mg/ml by Nanodrop;	GeneID (NCBI): 5686	CloneNo.: 241629H2
Source: Rabbit	UNIPROT ID: P28066	
Isotype: IgG	Full Name: proteasome (prosome, macropain) subunit, alpha type, 5	
Immunogen Catalog Number: AG34928	Calculated MW: 241 aa, 26 kDa	

Applications

Tested Applications:
IF/ICC, Cytometric bead array, Indirect ELISA

Species Specificity:
human

Product Information

84424-4-PBS targets PSMA5 as part of a matched antibody pair:

MP01286-3: 84424-4-PBS capture and 84424-1-PBS detection (validated in Cytometric bead array)

Unconjugated rabbit recombinant monoclonal antibody in PBS only (BSA and azide free) storage buffer at a concentration of 1 mg/mL, ready for conjugation. Created using Proteintech's proprietary in-house recombinant technology. Recombinant production enables unrivalled batch-to-batch consistency, easy scale-up, and future security of supply.

This conjugation ready format makes antibodies ideal for use in many applications including: ELISAs, multiplex assays requiring matched pairs, mass cytometry, and multiplex imaging applications. Antibody use should be optimized by the end user for each application and assay.

Background Information

Proteasome subunit alpha type-5(PSMA5) is a component of the 20S core proteasome complex involved in the proteolytic degradation of most intracellular proteins. This complex plays numerous essential roles within the cell by associating with different regulatory particles. It binds to two 19S regulatory particles(RP) to form the 26S proteasome, an ATP-dependent multisubunit protease that degrades polyubiquitinated proteins into small peptides. (PMID: 26661102)

Storage

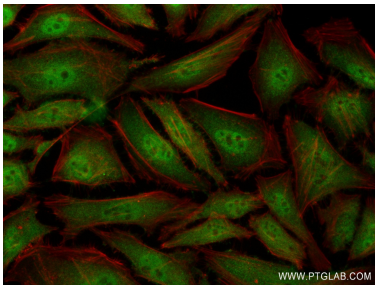
Storage:
Store at -80°C.

Storage Buffer:
PBS Only

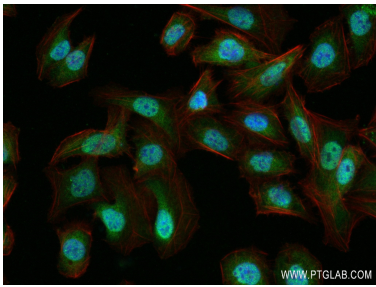
For technical support and original validation data for this product please contact:
T: 1 (888) 4PTGLAB (1-888-478-4522) (toll free in USA), or 1(312) 455-8498 (outside USA)
E: proteintech@ptglab.com
W: ptglab.com

This product is exclusively available under Proteintech Group brand and is not available to purchase from any other manufacturer.

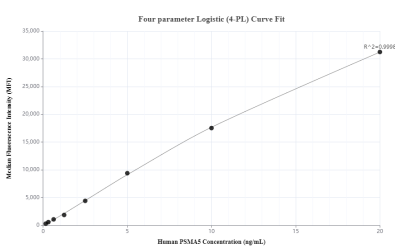
Selected Validation Data



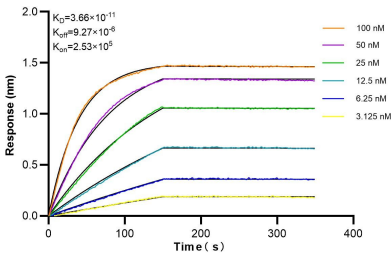
Immunofluorescent analysis of (4% PFA) fixed HeLa cells using PSMA5 antibody (84424-4-RR, Clone: 241629H2) at dilution of 1:250 and CoraLite®488-Conjugated Goat Anti-Rabbit IgG(H+L) (SA00013-2), CL594-Phalloidin (red). This data was developed using the same antibody clone with 84424-4-PBS in a different storage buffer formulation.



Immunofluorescent analysis of (4% PFA) fixed U2OS cells using PSMA5 antibody (84424-4-RR, Clone: 241629H2) at dilution of 1:250 and CoraLite®488-Conjugated Goat Anti-Rabbit IgG(H+L) (SA00013-2), CL594-Phalloidin (red). This data was developed using the same antibody clone with 84424-4-PBS in a different storage buffer formulation.



Cytometric bead array standard curve of MP01286-3, PSMA5 Recombinant Matched Antibody Pair, PBS Only. Capture antibody: 84424-4-PBS. Detection antibody: 84424-1-PBS. Standard: Ag34928. Range: 0.156-20 ng/mL.



Biolayer interferometry (BLI) kinetic assays of 84424-4-RR against Human PSMA5 were performed. The affinity constant is 36.6 pM.