

For Research Use Only

PSMA5 Recombinant antibody

Catalog Number: 84424-4-RR



Basic Information

Catalog Number: 84424-4-RR	GenBank Accession Number: BC103751	Purification Method: Protein A purification
Size: 100ul , Concentration: 1000 ug/ml by Nanodrop;	GeneID (NCBI): 5686	CloneNo.: 241629H2
Source: Rabbit	UNIPROT ID: P28066	Recommended Dilutions: IF/ICC 1:125-1:500
Isotype: IgG	Full Name: proteasome (prosome, macropain) subunit, alpha type, 5	
Immunogen Catalog Number: AG34928	Calculated MW: 241 aa, 26 kDa	

Applications

Tested Applications: IF/ICC, ELISA	Positive Controls: IF/ICC : HeLa cells, U2OS cells
Species Specificity: human	

Background Information

Proteasome subunit alpha type-5(PSMA5) is a component of the 20S core proteasome complex involved in the proteolytic degradation of most intracellular proteins. This complex plays numerous essential roles within the cell by associating with different regulatory particles. It binds to two 19S regulatory particles(RP) to form the 26S proteasome, an ATP-dependent multisubunit protease that degrades polyubiquitinated proteins into small peptides. (PMID: 26661102)

Storage

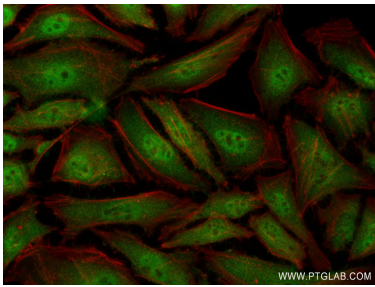
Storage:
Store at -20°C. Stable for one year after shipment.
Storage Buffer:
PBS with 0.02% sodium azide and 50% glycerol pH 7.3.
Aliquoting is unnecessary for -20°C storage

*** 20ul sizes contain 0.1% BSA

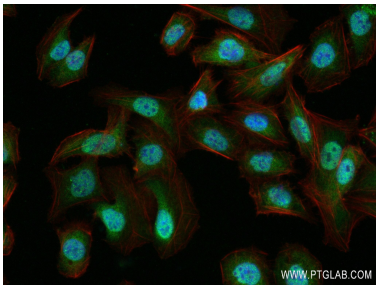
For technical support and original validation data for this product please contact:
T: 1 (888) 4PTGLAB (1-888-478-4522) (toll free in USA), or 1(312) 455-8498 (outside USA)
E: proteintech@ptglab.com
W: ptglab.com

This product is exclusively available under Proteintech Group brand and is not available to purchase from any other manufacturer.

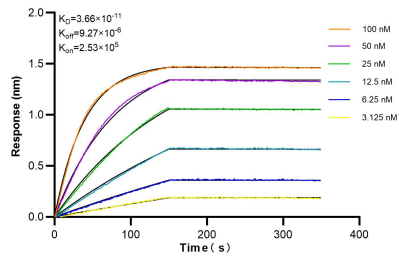
Selected Validation Data



Immunofluorescent analysis of (4% PFA) fixed HeLa cells using PSMA5 antibody (84424-4-RR, Clone: 241629H2) at dilution of 1:250 and CoraLite®488-Conjugated Goat Anti-Rabbit IgG(H+L) (SA00013-2), CL594-Phalloidin (red).



Immunofluorescent analysis of (4% PFA) fixed U2OS cells using PSMA5 antibody (84424-4-RR, Clone: 241629H2) at dilution of 1:250 and CoraLite®488-Conjugated Goat Anti-Rabbit IgG(H+L) (SA00013-2), CL594-Phalloidin (red).



Biolayer interferometry (BLI) kinetic assays of 84424-4-RR against Human PSMA5 were performed. The affinity constant is 36.6 pM.