

For Research Use Only

# PERM1 Recombinant antibody, PBS Only

Catalog Number: 84425-5-PBS



## Basic Information

<b>Catalog Number:</b> 84425-5-PBS	<b>GenBank Accession Number:</b> BC006300	<b>Purification Method:</b> Protein A purification
<b>Size:</b> 100ug , Concentration: 1 mg/ml by Nanodrop;	<b>GeneID (NCBI):</b> 84808	<b>CloneNo.:</b> 241613B6
<b>Source:</b> Rabbit	<b>UNIPROT ID:</b> Q5SV97	
<b>Isotype:</b> IgG	<b>Full Name:</b> chromosome 1 open reading frame 170	
<b>Immunogen Catalog Number:</b> AG23833		

## Applications

**Tested Applications:**  
IHC, IF/ICC, Indirect ELISA

**Species Specificity:**  
human, rat

## Background Information

PERM1 (PGC-1/ERR-induced regulator in muscle 1) is a muscle-specific protein induced by PGC-1 $\alpha$  and ERR $\alpha$ . PERM1 protein expression is mainly restricted to heart and skeletal muscle, indicating PERM1 functions as a tissue-specific regulator of mitochondrial biogenesis in response to exercise (PMID: 33549681, 36028747). Ablation of Perm1 in mice results in reduced protein expression of lipin-1 accompanied by accumulation of specific phospholipid species (PMID: 33549681). There are two major isoforms of Perm1 protein, the short isoform is about 85 kDa, and the long isoform is 105 kDa.

## Storage

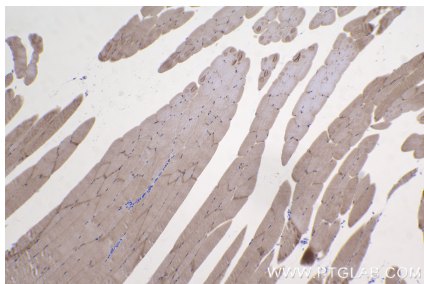
**Storage:**  
Store at -80°C.

**Storage Buffer:**  
PBS only, pH7.3

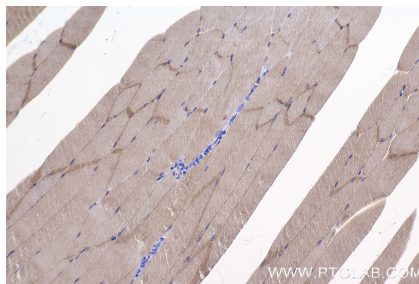
For technical support and original validation data for this product please contact:  
T: 1 (888) 4PTGLAB (1-888-478-4522) (toll free in USA), or 1(312) 455-8498 (outside USA)  
E: [proteintech@ptglab.com](mailto:proteintech@ptglab.com)  
W: [ptglab.com](http://ptglab.com)

This product is exclusively available under Proteintech Group brand and is not available to purchase from any other manufacturer.

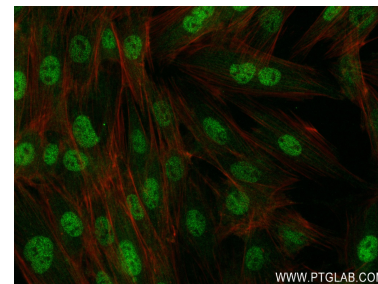
## Selected Validation Data



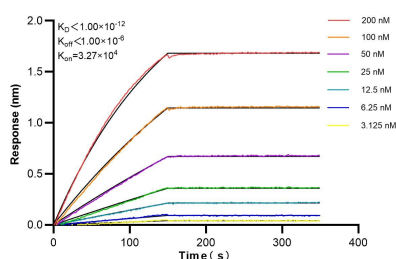
Immunohistochemical analysis of paraffin-embedded mouse skeletal muscle tissue slide using 84425-5-RR (PERM1 antibody) at dilution of 1:500 (under 10x lens). Heat mediated antigen retrieval with Tris-EDTA buffer (pH 9.0). This data was developed using the same antibody clone with 84425-5-PBS in a different storage buffer formulation.



Immunohistochemical analysis of paraffin-embedded mouse skeletal muscle tissue slide using 84425-5-RR (PERM1 antibody) at dilution of 1:500 (under 20x lens). Heat mediated antigen retrieval with Tris-EDTA buffer (pH 9.0). This data was developed using the same antibody clone with 84425-5-PBS in a different storage buffer formulation.



Immunofluorescent analysis of (4% PFA) fixed H9C2 cells using PERM1 antibody (84425-5-RR, Clone: 241613B6) at dilution of 1:250 and CoraLite®488-Conjugated Goat Anti-Rabbit IgG(H+L) (SA00013-2), CL594-Phalloidin (red). This data was developed using the same antibody clone with 84425-5-PBS in a different storage buffer formulation.



Biolayer interferometry (BLI) kinetic assays of 84425-5-RR against Human PERM1 were performed. The affinity constant is below 1 pM.