

For Research Use Only

Mouse SIRP alpha/CD172a Recombinant antibody, PBS Only (Capture/Detector)

Catalog Number: 84430-3-PBS



Basic Information

Catalog Number:

84430-3-PBS

Size:

100ug, Concentration: 1 mg/ml by Nanodrop;

Source:

Rabbit

Isotype:

IgG

GenBank Accession Number:

NM_007547.4

GeneID (NCBI):

19261

UNIPROT ID:

P97797-2

Full Name:

signal-regulatory protein alpha

Calculated MW:

56 kDa

Purification Method:

Protein A purification

CloneNo.:

241794E2

Applications

Tested Applications:

Cytometric bead array, Sandwich ELISA, Indirect ELISA, Sample test

Species Specificity:

mouse

Product Information

84430-3-PBS targets SIRP alpha/CD172a as part of a matched antibody pair:

MP01311-1: 84430-4-PBS capture and 84430-3-PBS detection (validated in Cytometric bead array)

MP01311-2: 84430-2-PBS capture and 84430-3-PBS detection (validated in Cytometric bead array)

MP01311-4: 84430-3-PBS capture and 84430-2-PBS detection (validated in Sandwich ELISA)

Unconjugated rabbit recombinant monoclonal antibody in PBS only (BSA and azide free) storage buffer at a concentration of 1 mg/mL, ready for conjugation. Created using Proteintech's proprietary in-house recombinant technology. Recombinant production enables unrivalled batch-to-batch consistency, easy scale-up, and future security of supply.

This conjugation ready format makes antibodies ideal for use in many applications including: ELISAs, multiplex assays requiring matched pairs, mass cytometry, and multiplex imaging applications. Antibody use should be optimized by the end user for each application and assay.

Storage

Storage:

Store at -80°C.

Storage Buffer:

PBS only, pH7.3

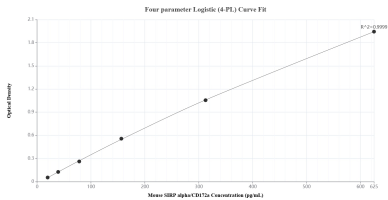
For technical support and original validation data for this product please contact:

T: 1 (888) 4PTGLAB (1-888-478-4522) (toll free in USA), or 1(312) 455-8498 (outside USA)

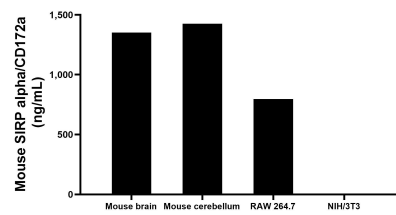
E: proteintech@ptglab.com
W: ptglab.com

This product is exclusively available under Proteintech Group brand and is not available to purchase from any other manufacturer.

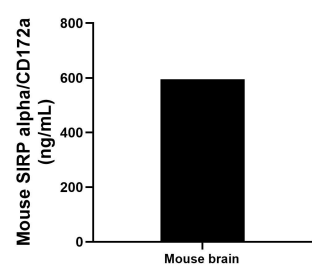
Selected Validation Data



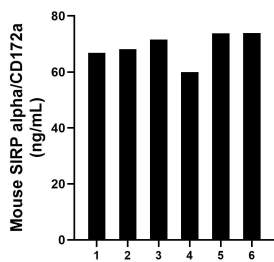
Sandwich ELISA standard curve of MP01311-4, Mouse SIRP alpha/CD172a Recombinant Matched Antibody Pair - PBS only. 84430-3-PBS was coated to a plate as the capture antibody and incubated with serial dilutions of standard Eg1520. 84430-2-PBS was HRP conjugated as the detection antibody. Range: 19.5-625 pg/mL



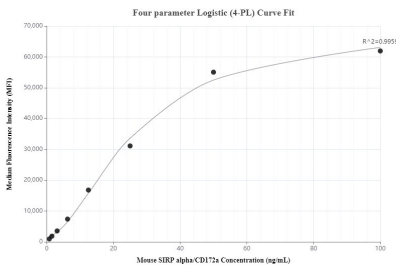
The mean SIRP alpha/CD172a concentration was determined to be 1,352.0 ng/mL in mouse brain cell extract based on a 2.0 mg/mL extract load, 1,425.8 ng/mL in mouse cerebellum cell extract based on a 2.9 mg/mL extract load, 796.6 ng/mL in RAW 264.7 cell extract based on a 4.2 mg/mL extract load and 4.0 ng/mL in NIH/3T3 cell extract based on a 4.4 mg/mL extract load.



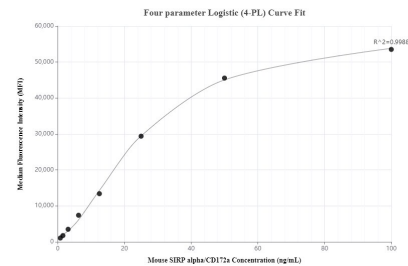
The mean SIRP alpha/CD172a concentration was determined to be 595.2 ng/mL in mouse brain tissue homogenate based on a 2.2 mg/mL extract load.



Serum of six mice was measured. The SIRP alpha/CD172a concentration of detected samples was determined to be 69.0 ng/mL with a range of 59.9-73.9 ng/mL



Cytometric bead array standard curve of MP01311-1, MOUSE SIRP Alpha/CD172a Recombinant Matched Antibody Pair, PBS Only. Capture antibody: 84430-4-PBS. Detection antibody: 84430-3-PBS. Standard: Eg1520. Range: 0.781-100 ng/mL



Cytometric bead array standard curve of MP01311-2, MOUSE SIRP Alpha/CD172a Recombinant Matched Antibody Pair, PBS Only. Capture antibody: 84430-2-PBS. Detection antibody: 84430-3-PBS. Standard: Eg1520. Range: 0.781-100 ng/mL