

For Research Use Only

Mouse Myeloperoxidase Recombinant antibody, PBS Only (Capture/Detector)

Catalog Number: 84436-3-PBS



Basic Information

Catalog Number:

84436-3-PBS

Size:

100ug, Concentration: 1 mg/ml by Nanodrop;

Source:

Rabbit

Isotype:

IgG

GenBank Accession Number:

AAR99349

GeneID (NCBI):

17523

UNIPROT ID:

P11247

Full Name:

myeloperoxidase

Calculated MW:

81KD

Purification Method:

Protein A purification

CloneNo.:

241839F8

Applications

Tested Applications:

Cytometric bead array, Sandwich ELISA, Indirect ELISA, Sample test

Species Specificity:

mouse

Product Information

84436-3-PBS targets Myeloperoxidase as part of a matched antibody pair:

MP01284-2: 84436-3-PBS capture and 84436-1-PBS detection (validated in Cytometric bead array)

MP01284-3: 84436-2-PBS capture and 84436-3-PBS detection (validated in Cytometric bead array)

MP01284-4: 84436-3-PBS capture and 84436-4-PBS detection (validated in Sandwich ELISA)

Unconjugated rabbit recombinant monoclonal antibody in PBS only (BSA and azide free) storage buffer at a concentration of 1 mg/mL, ready for conjugation. Created using Proteintech's proprietary in-house recombinant technology. Recombinant production enables unrivalled batch-to-batch consistency, easy scale-up, and future security of supply.

This conjugation ready format makes antibodies ideal for use in many applications including: ELISAs, multiplex assays requiring matched pairs, mass cytometry, and multiplex imaging applications. Antibody use should be optimized by the end user for each application and assay.

Storage

Storage:

Store at -80°C.

Storage Buffer:

PBS Only

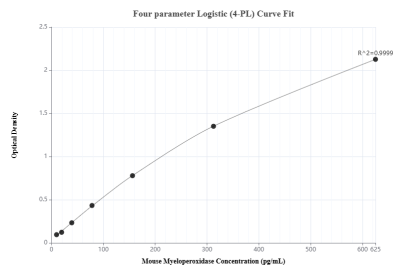
For technical support and original validation data for this product please contact:

T: 1 (888) 4PTGLAB (1-888-478-4522) (toll free in USA), or 1(312) 455-8498 (outside USA)

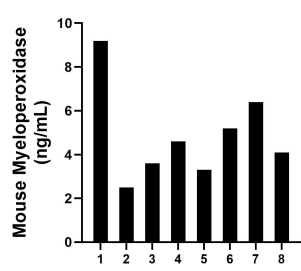
E: proteintech@ptglab.com
W: ptglab.com

This product is exclusively available under Proteintech Group brand and is not available to purchase from any other manufacturer.

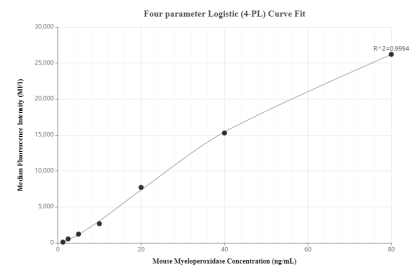
Selected Validation Data



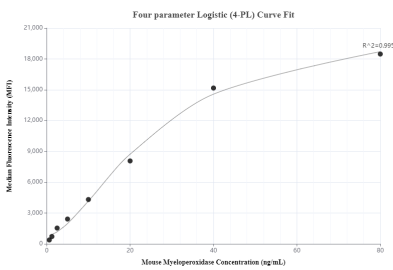
Sandwich ELISA standard curve of MP01284-4, Mouse MPO Recombinant Matched Antibody Pair - PBS only. 84436-3-PBS was coated to a plate as the capture antibody and incubated with serial dilutions of standard Eg0702. 84436-4-PBS was HRP conjugated as the detection antibody. Range: 9.77-625 pg/mL



Serum of eight mice was measured. The mouse MPO concentration of detected samples was determined to be 4.86 ng/mL with a range of 2.54 - 9.19 ng/mL.



Cytometric bead array standard curve of MP01284-2, MOUSE MPO Recombinant Matched Antibody Pair, PBS Only. Capture antibody: 84436-3-PBS. Detection antibody: 84436-1-PBS. Standard: Eg0702. Range: 1.25-80 ng/mL.



Cytometric bead array standard curve of MP01284-3, MOUSE MPO Recombinant Matched Antibody Pair, PBS Only. Capture antibody: 84436-2-PBS. Detection antibody: 84436-3-PBS. Standard: Eg0702. Range: 0.625-80 ng/mL