

For Research Use Only

M-cadherin Recombinant antibody, PBS Only

Catalog Number: 84440-5-PBS



Basic Information

Catalog Number: 84440-5-PBS	GenBank Accession Number: BC008951	Purification Method: Protein A purification
Size: 100ug , Concentration: 1 mg/ml by Nanodrop;	GeneID (NCBI): 1013	CloneNo.: 241837C10
Source: Rabbit	UNIPROT ID: P55291	
Isotype: IgG	Full Name: cadherin 15, type 1, M-cadherin (myotubule)	
Immunogen Catalog Number: AG25763	Calculated MW: 89 kDa	
	Observed MW: 90-130 kDa	

Applications

Tested Applications:
WB, IF/ICC, Indirect ELISA

Species Specificity:
human

Background Information

Cadherins are a family of transmembrane glycoproteins that mediate calcium-dependent cell-cell adhesion and play an important role in the maintenance of normal tissue architecture. M-cadherin (muscle cadherin), also known as CDH15 (cadherin-15), is a 124-kDa type I transmembrane glycoprotein that is highly expressed in developing skeletal muscle, satellite cells, and cerebellum (PMID: 9545347; 12052883). It associates with β -catenin and functions as a cell-cell adhesion molecule in a homophilic and specific manner (PMID: 9545347). M-cadherin is part of the myogenic program and may provide a trigger for terminal muscle differentiation (PMID: 1840697).

Storage

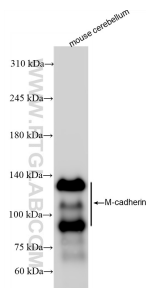
Storage:
Store at -80°C.

Storage Buffer:
PBS Only

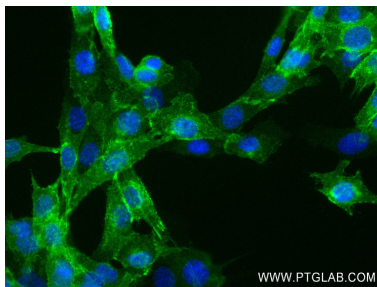
For technical support and original validation data for this product please contact:
T: 1 (888) 4PTGLAB (1-888-478-4522) (toll free in USA), or 1(312) 455-8498 (outside USA)
E: proteintech@ptglab.com
W: ptglab.com

This product is exclusively available under Proteintech Group brand and is not available to purchase from any other manufacturer.

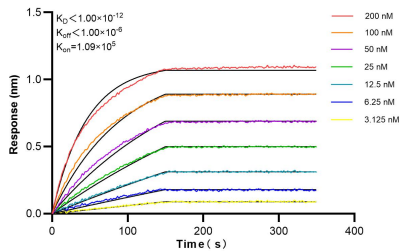
Selected Validation Data



mouse cerebellum tissue was subjected to SDS PAGE followed by western blot with 84440-5-RR (CDH15 antibody) at dilution of 1:1000 incubated at room temperature for 1.5 hours. This data was developed using the same antibody clone with 84440-5-PBS in a different storage buffer formulation.



Immunofluorescent analysis of (4% PFA) fixed C2C12 cells using CDH15 antibody (84440-5-RR, Clone: 241837C10) at dilution of 1:400 and CoraLite®488-Conjugated Goat Anti-Rabbit IgG(H+L) (SA00013-2). This data was developed using the same antibody clone with 84440-5-PBS in a different storage buffer formulation.



Biolayer interferometry (BLI) kinetic assays of 84440-5-RR against Human M-cadherin were performed. The affinity constant is below 1 pM.