

For Research Use Only

M-cadherin Recombinant antibody

Catalog Number: 84440-5-RR



Basic Information

Catalog Number: 84440-5-RR	GenBank Accession Number: BC008951	Purification Method: Protein A purification
Size: 100ul , Concentration: 1000 µg/ml by Nanodrop;	GeneID (NCBI): 1013	CloneNo.: 241837C10
Source: Rabbit	UNIPROT ID: P55291	Recommended Dilutions: WB 1:500-1:2000 IF/ICC 1:200-1:800
Isotype: IgG	Full Name: cadherin 15, type 1, M-cadherin (myotubule)	
Immunogen Catalog Number: AG25763	Calculated MW: 89 kDa	
	Observed MW: 90-130 kDa	

Applications

Tested Applications: WB, IF/ICC, ELISA	Positive Controls:
Species Specificity: human	WB : mouse cerebellum tissue, IF/ICC : C2C12 cells,

Background Information

Cadherins are a family of transmembrane glycoproteins that mediate calcium-dependent cell-cell adhesion and play an important role in the maintenance of normal tissue architecture. M-cadherin (muscle cadherin), also known as CDH15 (cadherin-15), is a 124-kDa type I transmembrane glycoprotein that is highly expressed in developing skeletal muscle, satellite cells, and cerebellum (PMID: 9545347; 12052883). It associates with β -catenin and functions as a cell-cell adhesion molecule in a homophilic and specific manner (PMID: 9545347). M-cadherin is part of the myogenic program and may provide a trigger for terminal muscle differentiation (PMID: 1840697).

Storage

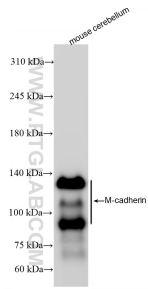
Storage:
Store at -20°C. Stable for one year after shipment.
Storage Buffer:
PBS with 0.02% sodium azide and 50% glycerol pH 7.3.
Aliquoting is unnecessary for -20°C storage

*** 20ul sizes contain 0.1% BSA

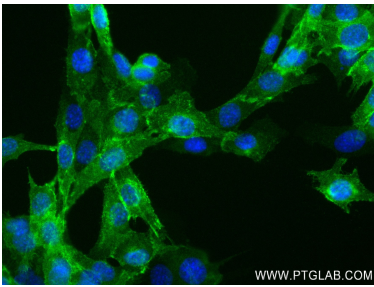
For technical support and original validation data for this product please contact:
T: 1 (888) 4PTGLAB (1-888-478-4522) (toll free in USA), or 1(312) 455-8498 (outside USA)
E: proteintech@ptglab.com
W: ptglab.com

This product is exclusively available under Proteintech Group brand and is not available to purchase from any other manufacturer.

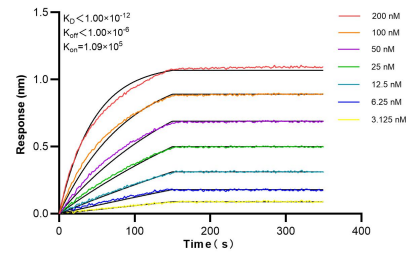
Selected Validation Data



mouse cerebellum tissue was subjected to SDS PAGE followed by western blot with 84440-5-RR (CDH15 antibody) at dilution of 1:1000 incubated at room temperature for 1.5 hours.



Immunofluorescent analysis of (4% PFA) fixed C2C12 cells using CDH15 antibody (84440-5-RR, Clone: 241837C10) at dilution of 1:400 and CoraLite®488-Conjugated Goat Anti-Rabbit IgG(H+L) (SA00013-2).



Biolayer interferometry (BLI) kinetic assays of 84440-5-RR against Human M-cadherin were performed. The affinity constant is below 1 pM.