

For Research Use Only

# Acetyl-Histone H2B (Lys16) Recombinant antibody, PBS Only

Catalog Number: 84446-2-PBS



## Basic Information

Catalog Number:

84446-2-PBS

Size:

100ug, Concentration: 1 mg/ml by  
Nanodrop;

Source:

Rabbit

Isotype:

IgG

GenBank Accession Number:

BC005827

GeneID (NCBI):

8349

UNIPROT ID:

Q16778

Full Name:

histone cluster 2, H2be

Calculated MW:

14 kDa

Purification Method:

Protein A purification

CloneNo.:

241194C7

## Applications

Tested Applications:

IF/ICC, Dot Blot, Indirect ELISA

Species Specificity:

human, mouse, rat

## Storage

Storage:

Store at -80°C.

Storage Buffer:

PBS only, pH7.3

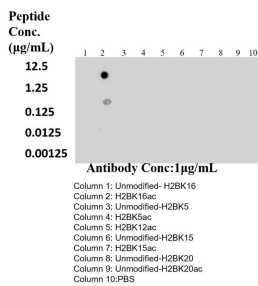
For technical support and original validation data for this product please contact:

T: 1 (888) 4PTGLAB (1-888-478-4522) (toll free  
in USA), or 1(312) 455-8498 (outside USA)

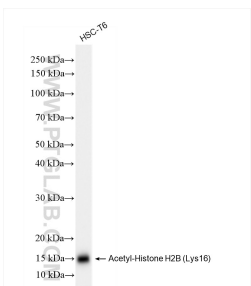
E: [proteintech@ptglab.com](mailto:proteintech@ptglab.com)  
W: [ptglab.com](http://ptglab.com)

This product is exclusively available under Proteintech Group brand and is not available to purchase from any other manufacturer.

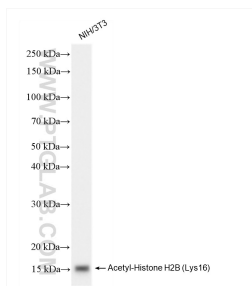
## Selected Validation Data



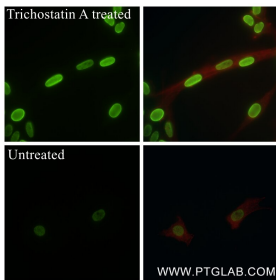
Dot blot analysis was used to confirm the specificity of Acetyl-Histone H2B (Lys16) antibody. Acetylated peptides were spotted onto NC and probed with antibody at 1 µg/mL. The amount of peptide (µg/mL) spotted is indicated next to each row. This data was developed using the same antibody clone with 84446-2-PBS in a different storage buffer formulation.



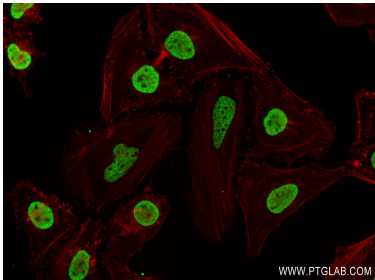
HSC-T6 cells were subjected to SDS PAGE followed by western blot with 84446-2-RR (Acetyl-Histone H2B (Lys16) antibody) at dilution of 1:2000 incubated at room temperature for 1.5 hours. This data was developed using the same antibody clone with 84446-2-PBS in a different storage buffer formulation.



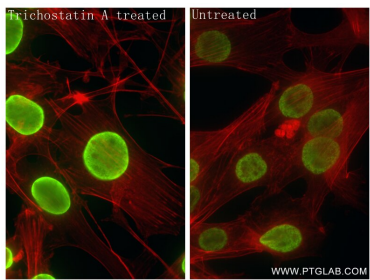
NIH/3T3 cells were subjected to SDS PAGE followed by western blot with 84446-2-RR (Acetyl-Histone H2B (Lys16) antibody) at dilution of 1:2000 incubated at room temperature for 1.5 hours. This data was developed using the same antibody clone with 84446-2-PBS in a different storage buffer formulation.



Immunofluorescent analysis of (4% PFA) fixed Trichostatin A treated C6 cells using Acetyl-Histone H2B (Lys16) antibody (84446-2-RR, Clone: 241194C7) at dilution of 1:1000 and Coralite®488-Conjugated Goat Anti-Rabbit IgG(H+L) (SA00013-2), CL594-Phalloidin (red). This data was developed using the same antibody clone with 84446-2-PBS in a different storage buffer formulation.



Immunofluorescent analysis of (4% PFA) fixed HeLa cells using Acetyl-Histone H2B (Lys16) antibody (84446-2-RR, Clone: 241194C7) at dilution of 1:200 and Multi-rAb Coralite® Plus 488-Goat Anti-Rabbit Recombinant Secondary Antibody (H+L) (RGAR002). This data was developed using the same antibody clone with 84446-2-PBS in a different storage buffer formulation.



Immunofluorescent analysis of (4% PFA) fixed Trichostatin A treated NIH/3T3 cells using Acetyl-Histone H2B (Lys16) antibody (84446-2-RR, Clone: 241194C7) at dilution of 1:1000 and Coralite®488-Conjugated Goat Anti-Rabbit IgG(H+L) (SA00013-2), CL594-Phalloidin (red). This data was developed using the same antibody clone with 84446-2-PBS in a different storage buffer formulation.