

For Research Use Only

GMEB1-Specific Recombinant antibody, PBS Only

Catalog Number: 84448-1-PBS



Basic Information

Catalog Number:

84448-1-PBS

Size:

100ug , Concentration: 1 mg/ml by
Nanodrop;

Source:

Rabbit

Isotype:

IgG

GenBank Accession Number:

NM_006582

GeneID (NCBI):

10691

UNIPROT ID:

Q9Y692

Full Name:

glucocorticoid modulatory element
binding protein 1

Calculated MW:

63 kDa

Observed MW:

88 kDa

Purification Method:

Protein A purification

CloneNo.:

241447C6

Applications

Tested Applications:

WB, FC (Intra), Indirect ELISA

Species Specificity:

human

Background Information

GMEB1 is a trans-acting factor that binds to glucocorticoid modulatory elements (GME), acting in estrogen receptor-regulated pathway GREB1 is expressed in proliferating prostate tissue & prostate cancer and is thought to function in hormone-dependent cancer growth. It associates with GMEB2 protein, and the complex is essential for parvovirus DNA replication.

Storage

Storage:

Store at -80°C.

Storage Buffer:

PBS Only

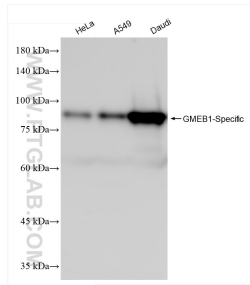
For technical support and original validation data for this product please contact:

T: 1 (888) 4PTGLAB (1-888-478-4522) (toll free
in USA), or 1(312) 455-8498 (outside USA)

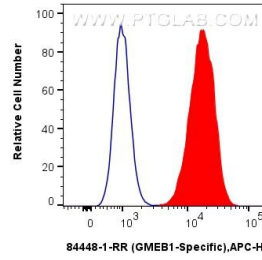
E: proteintech@ptglab.com
W: ptglab.com

This product is exclusively available under Proteintech Group brand and is not available to purchase from any other manufacturer.

Selected Validation Data



Various lysates were subjected to SDS PAGE followed by western blot with 84448-1-RR (GMEB1-Specific antibody) at dilution of 1:10000 incubated at room temperature for 1.5 hours. This data was developed using the same antibody clone with 84448-1-PBS in a different storage buffer formulation.



1×10^6 HeLa cells were intracellularly stained with 0.25 ug GMEB1-Specific Recombinant antibody (84448-1-RR, Clone:241447C6) and APC-Conjugated Goat Anti-Rabbit IgG(H+L)(red), or 0.25 ug Isotype Control (blue). Cells were fixed and permeabilized with True-Nuclear Transcription Factor Buffer Set. This data was developed using the same antibody clone with 84448-1-PBS in a different storage buffer formulation.