

For Research Use Only

Exportin 4 Recombinant antibody

Catalog Number: 84449-1-RR



Basic Information

Catalog Number:

84449-1-RR

Size:

100ul, Concentration: 850 µg/ml by Nanodrop;

Source:

Rabbit

Isotype:

IgG

Immunogen Catalog Number:

AG21845

GenBank Accession Number:

BC113571

GeneID (NCBI):

64328

UNIPROT ID:

Q9C0E2

Full Name:

exportin 4

Calculated MW:

1151 aa, 130 kDa

Observed MW:

130 kDa

Purification Method:

Protein A purification

CloneNo.:

241443A5

Recommended Dilutions:

WB 1:2000-1:17000

IF/ICC 1:200-1:800

Applications

Tested Applications:

WB, IF/ICC, FC (Intra), ELISA

Species Specificity:

human, mouse

Positive Controls:

WB : HEK-293 cells, HeLa cells, K-562 cells, SW480 cells, RAW 264.7 cells

IF/ICC : K-562 cells,

Background Information

exportin 4 (XPO4) maps to chromosome 13q and belongs to the importin β family which acts as a bidirectional nuclear transport receptor. Decreased XPO4 expression has been shown to associate with hepatocellular carcinoma. A genome-wide copy number variation (CNV) association study in a small cohort of Malaysian subjects identified a CNV in XPO4 to be correlated with the progression of metabolic (dysfunction) associated fatty liver disease (MAFLD). (PMID: 34388518)

Storage

Storage:

Store at -20°C. Stable for one year after shipment.

Storage Buffer:

PBS with 0.02% sodium azide and 50% glycerol, pH7.3

Aliquoting is unnecessary for -20°C storage

*** 20ul sizes contain 0.1% BSA

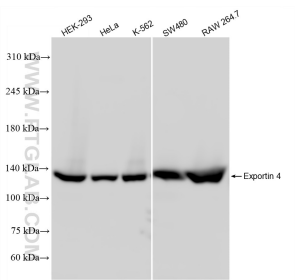
For technical support and original validation data for this product please contact:

T: 1 (888) 4PTGLAB (1-888-478-4522) (toll free in USA), or 1(312) 455-8498 (outside USA)

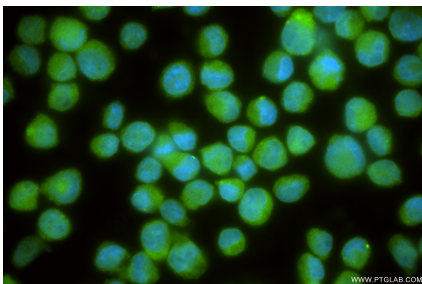
E: proteintech@ptglab.com
W: ptglab.com

This product is exclusively available under Proteintech Group brand and is not available to purchase from any other manufacturer.

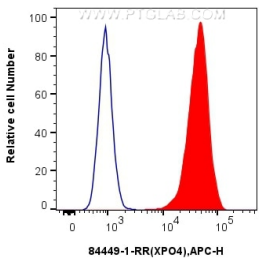
Selected Validation Data



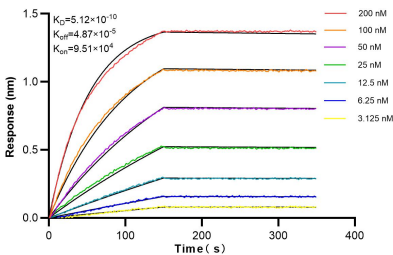
Various lysates were subjected to SDS PAGE followed by western blot with 84449-1-RR (XPO4 antibody) at dilution of 1:8500 incubated at room temperature for 1.5 hours.



Immunofluorescent analysis of (4% PFA) fixed K-562 cells using Exportin 4 antibody (84449-1-RR, Clone: 241443A5) at dilution of 1:400 and CoraLite®488-Conjugated Goat Anti-Rabbit IgG(H+L) (SA00013-2).



1x10⁶ HeLa cells were intracellularly stained with 0.25 ug Exportin 4 Recombinant antibody (84449-1-RR, Clone:241443A5) and APC-Conjugated Goat Anti-Rabbit IgG(H+L)(red), or 0.25 ug Isotype Control (blue). Cells were fixed and permeabilized with True-Nuclear Transcription Factor Buffer Set.



Biolayer interferometry (BLI) kinetic assays of 84449-1-RR against Human Exportin 4 were performed. The affinity constant is 0.512 nM.