

For Research Use Only

# OLFML1 Recombinant antibody, PBS Only

Catalog Number: 84454-1-PBS



## Basic Information

<b>Catalog Number:</b> 84454-1-PBS	<b>GenBank Accession Number:</b> BC092488	<b>Purification Method:</b> Protein A purification
<b>Size:</b> 100ug , Concentration: 1 mg/ml by Nanodrop;	<b>GeneID (NCBI):</b> 283298	<b>CloneNo.:</b> 241561G7
<b>Source:</b> Rabbit	<b>UNIPROT ID:</b> Q6UWY5	
<b>Isotype:</b> IgG	<b>Full Name:</b> olfactomedin-like 1	
<b>Immunogen Catalog Number:</b> AG35125	<b>Calculated MW:</b> 402 aa, 46 kDa	
	<b>Observed MW:</b> 60 kDa	

## Applications

**Tested Applications:**  
WB, Indirect ELISA

**Species Specificity:**  
human, mouse, rat

## Background Information

OLFML1 (Olfactomedin-like protein 1) is a novel member of human OLF protein family with an olfactamine domain (143-397 aa) in its C-terminus. OLFML1 exhibits the promotion of cell proliferation, along with the increase of percentage of S phase cells. OLFML1 is considered a secreted glycoprotein that enhances cell cycle progression in human cancer cell lines in vitro (PMID: 30266405). OLFML1 contains three potential N-glycosylation sites (residues 66, 138 and 183) and could be modified by the N-glycosylation (PMID: 18708057).

## Storage

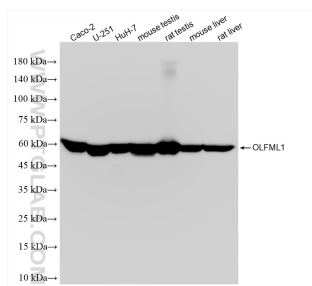
**Storage:**  
Store at -80°C.

**Storage Buffer:**  
PBS Only

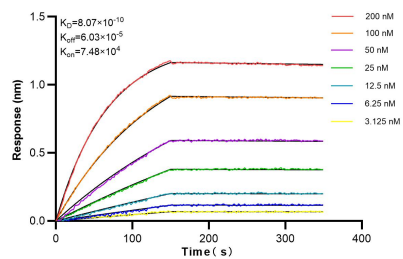
For technical support and original validation data for this product please contact:  
T: 1 (888) 4PTGLAB (1-888-478-4522) (toll free in USA), or 1(312) 455-8498 (outside USA)  
E: [proteintech@ptglab.com](mailto:proteintech@ptglab.com)  
W: [ptglab.com](http://ptglab.com)

This product is exclusively available under Proteintech Group brand and is not available to purchase from any other manufacturer.

## Selected Validation Data



Various lysates were subjected to SDS PAGE followed by western blot with 84454-1-RR (OLFML1 antibody) at dilution of 1:10000 incubated at room temperature for 1.5 hours. This data was developed using the same antibody clone with 84454-1-PBS in a different storage buffer formulation.



Biolayer interferometry (BLI) kinetic assays of 84454-1-RR against Human OLFML1 were performed. The affinity constant is 0.807 nM.