

For Research Use Only

P2RX6 Recombinant antibody

Catalog Number: 84458-4-RR



Basic Information

Catalog Number: 84458-4-RR	GenBank Accession Number: BC033488	Purification Method: Protein A purification
Size: 100ul , Concentration: 1000 ug/ml by Nanodrop;	GeneID (NCBI): 9127	CloneNo.: 241620B10
Source: Rabbit	UNIPROT ID: O15547	Recommended Dilutions: WB 1:1000-1:8000
Isotype: IgG	Full Name: purinergic receptor P2X, ligand-gated ion channel, 6	
Immunogen Catalog Number: AG12331	Calculated MW: 431 aa, 48 kDa	
	Observed MW: 45 kDa	

Applications

Tested Applications: WB, ELISA	Positive Controls: WB : mouse skeletal muscle tissue,
Species Specificity: human, mouse	

Background Information

The P2 receptors have two subfamilies in mammalian cells, P2X and P2Y. P2X family of ligand-gated ion channel receptors have seven members, P2RX1-7, which all constitute non-selective cation channels proposed to be functional under a homo- or heterotrimeric association. P2RX6 is predominantly expressed in skeletal muscle, and regulated by p53. It's reported that ATP might increase renal cell carcinoma cells migration and invasion through P2RX6.(PMID: 31159832, PMID:9242461)

Storage

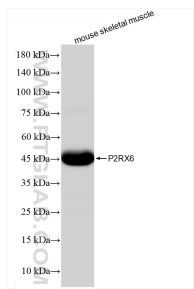
Storage:
Store at -20°C. Stable for one year after shipment.
Storage Buffer:
PBS with 0.02% sodium azide and 50% glycerol pH 7.3.
Aliquoting is unnecessary for -20°C storage

*** 20ul sizes contain 0.1% BSA

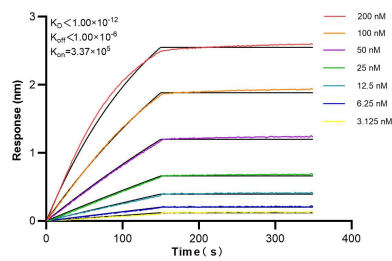
For technical support and original validation data for this product please contact:
T: 1 (888) 4PTGLAB (1-888-478-4522) (toll free in USA), or 1(312) 455-8498 (outside USA)
E: proteintech@ptglab.com
W: ptglab.com

This product is exclusively available under Proteintech Group brand and is not available to purchase from any other manufacturer.

Selected Validation Data



mouse skeletal muscle tissue were subjected to SDS PAGE followed by western blot with 84458-4-RR (P2RX6 antibody) at dilution of 1:4000 incubated at room temperature for 1.5 hours.



Biolayer interferometry (BLI) kinetic assays of 84458-4-RR against Human P2RX6 were performed. The affinity constant is below 1 pM.