

For Research Use Only

# LEPR Recombinant antibody, PBS Only

Catalog Number: 84464-4-PBS



## Basic Information

Catalog Number:

84464-4-PBS

Size:

100ug , Concentration: 1 mg/ml by Nanodrop;

Source:

Rabbit

Isotype:

IgG

GenBank Accession Number:

NM\_002303

GeneID (NCBI):

3953

UNIPROT ID:

P48357

Full Name:

leptin receptor

Calculated MW:

132 kDa

Observed MW:

120 kDa

Purification Method:

Protein A purification

CloneNo.:

241692G9

## Applications

Tested Applications:

WB, Indirect ELISA

Species Specificity:

human, mouse

## Background Information

The hormone leptin, secreted predominantly from adipose tissue, plays a crucial role in the regulation of numerous neuroendocrine functions, from energy homeostasis to reproduction (PMID: 22249808). Leptin acts through the leptin receptor (LEPR, also known as OB-R), a single-transmembrane-domain receptor of the cytokine receptor family. On ligand binding, LEPR mediates signaling through JAK2/STAT3 (PMID: 9102398). LEPR plays an important role in the regulation of glucose homeostasis via feeding and adiposity. Alternatively spliced transcript variants encoding different isoforms of LEPR have been described.

## Storage

Storage:

Store at -80°C.

Storage Buffer:

PBS Only

For technical support and original validation data for this product please contact:

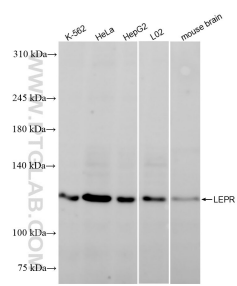
T: 1 (888) 4PTGLAB (1-888-478-4522) (toll free in USA), or 1(312) 455-8498 (outside USA)

E: [proteintech@ptglab.com](mailto:proteintech@ptglab.com)

W: [ptglab.com](http://ptglab.com)

This product is exclusively available under Proteintech Group brand and is not available to purchase from any other manufacturer.

# Selected Validation Data



Various lysates were subjected to SDS PAGE followed by western blot with 84464-4-RR (LEPR antibody) at dilution of 1:1000 incubated at room temperature for 1.5 hours. This data was developed using the same antibody clone with 84464-4-PBS in a different storage buffer formulation.