

For Research Use Only

INSR/CD220 Recombinant antibody, PBS Only (Capture/Detector)

Catalog Number: 84467-2-PBS



Basic Information

| | | |
|--|--|---|
| Catalog Number: 84467-2-PBS | GenBank Accession Number: BC117172 | Purification Method: Protein A purification |
| Size: 100ug, Concentration: 1 mg/ml by Nanodrop; | GeneID (NCBI): 3643 | CloneNo.: 241687H7 |
| Source: Rabbit | UNIPROT ID: P06213 | |
| Isotype: IgG | Full Name: INSR | |
| | Observed MW: 95 kDa | |

Applications

Tested Applications:
WB, Cytometric bead array, Sandwich ELISA, Indirect ELISA, Sample test

Species Specificity:
human

Product Information

84467-2-PBS targets INSR/CD220 as part of a matched antibody pair:

MP01349-1: 84467-2-PBS capture and 84467-1-PBS detection (validated in Cytometric bead array)

MP01349-2: 84467-1-PBS capture and 84467-2-PBS detection (validated in Sandwich ELISA)

Unconjugated rabbit recombinant monoclonal antibody in PBS only (BSA and azide free) storage buffer at a concentration of 1 mg/mL, ready for conjugation. Created using Proteintech's proprietary in-house recombinant technology. Recombinant production enables unrivalled batch-to-batch consistency, easy scale-up, and future security of supply.

This conjugation ready format makes antibodies ideal for use in many applications including: ELISAs, multiplex assays requiring matched pairs, mass cytometry, and multiplex imaging applications. Antibody use should be optimized by the end user for each application and assay.

Background Information

The biological effects of INS are mediated by a membrane-spanning cell surface receptor that has been shown to consist of disulfide-linked alpha-subunits (135 kDa) and beta-subunits (95 kDa) that are cleaved products of a common precursor. The binding of INS to the receptor extracellular domain results in intracellular activation of a tyrosine-specific kinase activity and the generation of signals that determine the cellular response (PMID: 2369896).

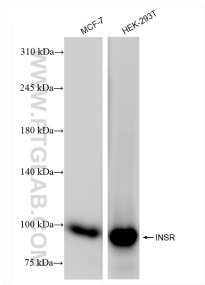
Storage

Storage:
Store at -80°C.
Storage Buffer:
PBS only, pH7.3

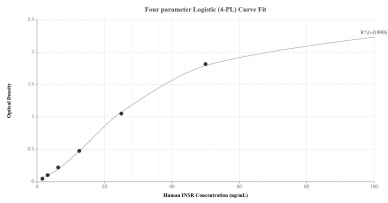
For technical support and original validation data for this product please contact:
T: 1 (888) 4PTGLAB (1-888-478-4522) (toll free in USA), or 1(312) 455-8498 (outside USA)
E: proteintech@ptglab.com
W: ptglab.com

This product is exclusively available under Proteintech Group brand and is not available to purchase from any other manufacturer.

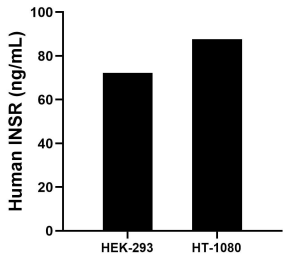
Selected Validation Data



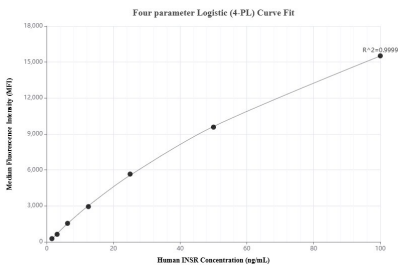
MCF-7 cells were subjected to SDS PAGE followed by western blot with 84467-2-RR (INSR antibody) at dilution of 1:1000 incubated at room temperature for 1.5 hours. This data was developed using the same antibody clone with 84467-2-PBS in a different storage buffer formulation.



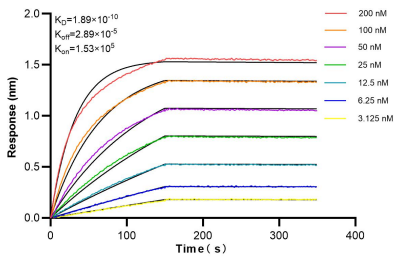
Sandwich ELISA standard curve of MP01349-2, Human INSR Recombinant Matched Antibody Pair - PBS only. 84467-1-PBS was coated to a plate as the capture antibody and incubated with serial dilutions of standard RP00007. 84467-2-PBS was HRP conjugated as the detection antibody. Range: 1.56-100 ng/mL.



The mean INSR concentration was determined to be 72.33 ng/mL in HEK-293 cell extract based on a 1.50 mg/mL extract load and 87.72 ng/mL in HT-1080 cell extract based on a 2.50 mg/mL extract load.



Cytometric bead array standard curve of MP01349-1, INSR Recombinant Matched Antibody Pair, PBS Only. Capture antibody: 84467-2-PBS. Detection antibody: 84467-1-PBS. Standard: RP00007. Range: 1.56-100 ng/mL.



Biolayer interferometry (BLI) kinetic assays of 84467-2-RR against Human INSR were performed. The affinity constant is 0.189 nM.