

For Research Use Only

# Mouse Tie-2 Recombinant antibody, PBS Only (Detector)

Catalog Number: 84469-1-PBS



## Basic Information

<b>Catalog Number:</b> 84469-1-PBS	<b>GenBank Accession Number:</b> NM_001290549.1	<b>Purification Method:</b> Protein A purification
<b>Size:</b> 100ug , Concentration: 1 mg/ml by Nanodrop;	<b>GeneID (NCBI):</b> 21687	<b>CloneNo.:</b> 241753C1
<b>Source:</b> Rabbit	<b>UNIPROT ID:</b> Q02858	
<b>Isotype:</b> IgG	<b>Full Name:</b> endothelial-specific receptor tyrosine kinase	
	<b>Calculated MW:</b> 126kDa	

## Applications

**Tested Applications:**  
Cytometric bead array, Sandwich ELISA, Indirect ELISA,  
Sample test

**Species Specificity:**  
mouse

## Product Information

84469-1-PBS targets Tie-2 as part of a matched antibody pair:

MP01351-1: 84469-2-PBS capture and 84469-1-PBS detection (validated in Cytometric bead array)

MP01351-2: 84469-4-PBS capture and 84469-1-PBS detection (validated in Cytometric bead array, Sandwich ELISA)

Unconjugated rabbit recombinant monoclonal antibody in PBS only (BSA and azide free) storage buffer at a concentration of 1 mg/mL, ready for conjugation. Created using Proteintech's proprietary in-house recombinant technology. Recombinant production enables unrivalled batch-to-batch consistency, easy scale-up, and future security of supply.

This conjugation ready format makes antibodies ideal for use in many applications including: ELISAs, multiplex assays requiring matched pairs, mass cytometry, and multiplex imaging applications. Antibody use should be optimized by the end user for each application and assay.

## Storage

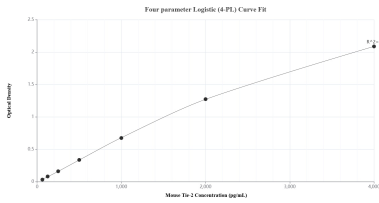
**Storage:**  
Store at -80°C.

**Storage Buffer:**  
PBS Only

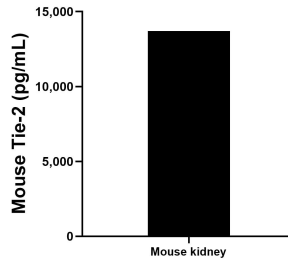
For technical support and original validation data for this product please contact:  
T: 1 (888) 4PTGLAB (1-888-478-4522) (toll free in USA), or 1(312) 455-8498 (outside USA)      E: proteintech@ptglab.com  
W: ptglab.com

This product is exclusively available under Proteintech Group brand and is not available to purchase from any other manufacturer.

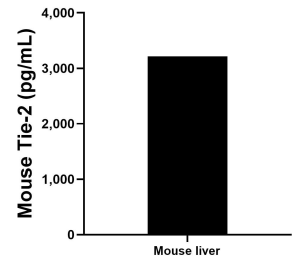
## Selected Validation Data



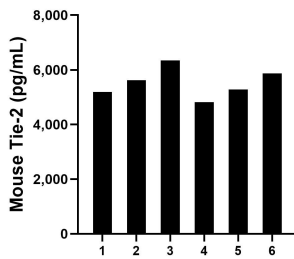
Sandwich ELISA standard curve of MP01351-2, Mouse Tie-2 Recombinant Matched Antibody Pair - PBS only. 84469-4-PBS was coated to a plate as the capture antibody and incubated with serial dilutions of standard Eg1514. 84469-1-PBS was HRP conjugated as the detection antibody. Range: 125-4000 pg/mL



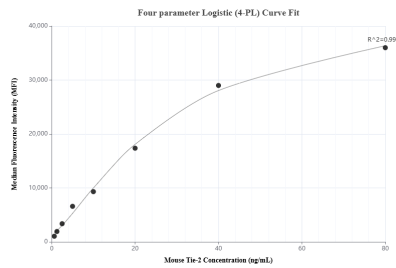
One mouse kidney was cultured for 18 hours in RPMI 1640 supplemented with 10% fetal bovine serum, 50  $\mu$ M  $\beta$ -mercaptoethanol, 2 mM L-glutamine, and 100  $\mu$ g/mL of streptomycin sulfate. An aliquot of the cell culture supernatant was removed, assayed for mouse Tie-2 and measured 13696.0 pg/mL



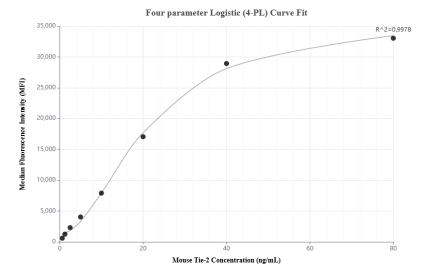
The mean Tie-2 concentration was determined to be 3214.5 pg/mL in mouse liver tissue homogenate based on a 3.3 mg/mL extract load.



Serum of six mice was measured. The Tie-2 concentration of detected samples was determined to be 5520.9 pg/mL with a range of 4813.2-6347.4 pg/mL



Cytometric bead array standard curve of MP01351-1, MOUSE Tie-2 Recombinant Matched Antibody Pair, PBS Only. Capture antibody: 84469-2-PBS. Detection antibody: 84469-1-PBS. Standard: Eg1514. Range: 0.625-80 ng/mL



Cytometric bead array standard curve of MP01351-2, MOUSE Tie-2 Recombinant Matched Antibody Pair, PBS Only. Capture antibody: 84469-4-PBS. Detection antibody: 84469-1-PBS. Standard: Eg1514. Range: 0.625-80 ng/mL