

For Research Use Only

Tie-2 Recombinant antibody

Catalog Number: 84469-5-RR



Basic Information

Catalog Number:

84469-5-RR

Size:

100ul, Concentration: 1000 µg/ml by Nanodrop;

Source:

Rabbit

Isotype:

IgG

GenBank Accession Number:

NM_001290549.1

GeneID (NCBI):

21687

UNIPROT ID:

Q02858

Full Name:

endothelial-specific receptor tyrosine kinase

Calculated MW:

126kDa

Purification Method:

Protein A purification

CloneNo.:

241753F12

Recommended Dilutions:

IF/ICC 1:125-1:500

Applications

Tested Applications:

IF/ICC, ELISA

Species Specificity:

mouse

Positive Controls:

IF/ICC : bEnd.3 cells,

Background Information

Tie-2, or TEK, is a receptor tyrosine kinase (RTK) specifically expressed in endothelial cells. It plays a crucial role in angiogenesis, forming new blood vessels, and maintaining vascular stability. Tie-2 is a member of the Tie receptor family, characterized by the presence of immunoglobulin and epidermal growth factor (EGF) homology domains. Tie-2 plays a significant role in several vascular diseases, including vascular malformations like venous malformations. It is also implicated in pathological vascular remodeling associated with tumor growth, where it is often overexpressed in tumor vessels.

Storage

Storage:

Store at -20°C. Stable for one year after shipment.

Storage Buffer:

PBS with 0.02% sodium azide and 50% glycerol pH 7.3.

Aliquoting is unnecessary for -20°C storage

*** 20ul sizes contain 0.1% BSA

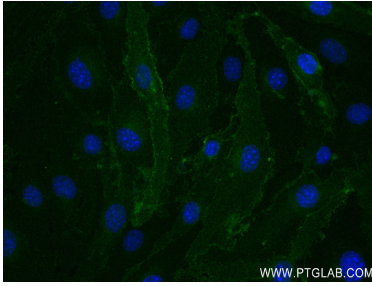
For technical support and original validation data for this product please contact:

T: 1 (888) 4PTGLAB (1-888-478-4522) (toll free in USA), or 1(312) 455-8498 (outside USA)

E: proteintech@ptglab.com
W: ptglab.com

This product is exclusively available under Proteintech Group brand and is not available to purchase from any other manufacturer.

Selected Validation Data



Immunofluorescent analysis of (4% PFA) fixed bEnd.3 cells using Tie-2 antibody (84469-5-RR, Clone: 241753F12) at dilution of 1:250 and CoraLite®488-Conjugated Goat Anti-Rabbit IgG(H+L) (SA00013-2).