

For Research Use Only

DKK1 Recombinant monoclonal antibody, PBS Only (Detector)

Catalog Number: 84471-4-PBS



Basic Information

Catalog Number: 84471-4-PBS	GenBank Accession Number: NM_012242.2	Purification Method: Protein A purification
Size: 100ug , Concentration: 1 mg/ml by Nanodrop;	GeneID (NCBI): 22943	CloneNo.: 251996G9
Source: Rabbit	UNIPROT ID: O94907	
Isotype: IgG	Full Name: dickkopf homolog 1 (Xenopus laevis)	
Immunogen Catalog Number: EG3114	Calculated MW: 29 kDa	

Applications

Tested Applications:
Sandwich ELISA, Indirect ELISA

Species Specificity:
human

Product Information

84471-4-PBS targets DKK1 as part of a matched antibody pair:

MP01353-2: 84471-5-PBS capture and 84471-4-PBS detection (validated in Sandwich ELISA)

Unconjugated rabbit recombinant monoclonal antibody in PBS only (BSA and azide free) storage buffer at a concentration of 1 mg/mL, ready for conjugation. Created using Proteintech's proprietary in-house recombinant technology. Recombinant production enables unrivalled batch-to-batch consistency, easy scale-up, and future security of supply.

This conjugation ready format makes antibodies ideal for use in many applications including: ELISAs, multiplex assays requiring matched pairs, mass cytometry, and multiplex imaging applications. Antibody use should be optimized by the end user for each application and assay.

Storage

Storage:
Store at -80°C.

Storage Buffer:
PBS only, pH7.3

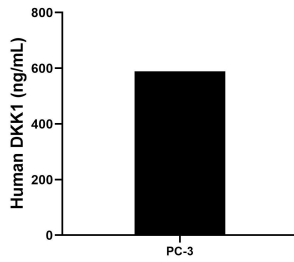
For technical support and original validation data for this product please contact:

T: 1 (888) 4PTGLAB (1-888-478-4522) (toll free in USA), or 1(312) 455-8498 (outside USA)

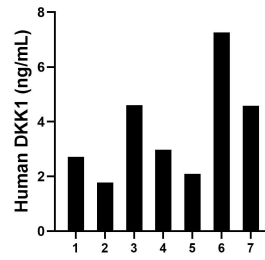
E: proteintech@ptglab.com
W: ptglab.com

This product is exclusively available under Proteintech Group brand and is not available to purchase from any other manufacturer.

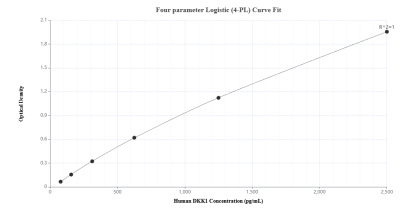
Selected Validation Data



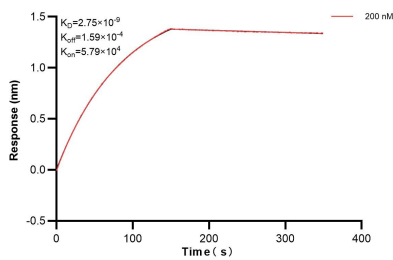
PC-3 human prostate cancer cells were cultured in RPMI supplemented with 10% fetal bovine serum, 2 mM L-glutamine, 100 U/mL penicillin, and 100 µg/mL streptomycin sulfate for 72 hours. Aliquots of the cell culture supernates were removed, assayed for levels of human DKK1 and measured 588.98 ng/mL.



Serum of seven individual healthy human donors was measured. The human DKK1 concentration of detected samples was determined to be 3.71 ng/mL with a range of 1.78 - 7.26 ng/mL.



Sandwich ELISA standard curve of MP01353-2, Human DKK1 Recombinant Matched Antibody Pair - PBS only. 84471-5-PBS was coated to a plate as the capture antibody and incubated with serial dilutions of standard Eg3114. 84471-4-PBS was HRP conjugated as the detection antibody. Range: 78.1-2500 pg/mL.



Biolayer interferometry (BLI) kinetic assay of 84471-4-PBS against Human DKK1 was performed. The affinity constant is 2.75 nM.