

For Research Use Only

# Mouse CD107b / LAMP2 Recombinant antibody, PBS Only (Capture)

Catalog Number: 84474-3-PBS



## Basic Information

<b>Catalog Number:</b> 84474-3-PBS	<b>GenBank Accession Number:</b> NM_001017959.2	<b>Purification Method:</b> Protein A purification
<b>Size:</b> 100ug, Concentration: 1 mg/ml by Nanodrop;	<b>GeneID (NCBI):</b> 16784	<b>CloneNo.:</b> 241893G7
<b>Source:</b> Rabbit	<b>UNIPROT ID:</b> P17047-1	
<b>Isotype:</b> IgG	<b>Full Name:</b> lysosomal-associated membrane protein 2	
	<b>Calculated MW:</b> 46 kDa	
	<b>Observed MW:</b> 90 kDa	

## Applications

**Tested Applications:**  
WB, IHC, IF/ICC, Cytometric bead array, Indirect ELISA

**Species Specificity:**  
mouse

## Product Information

84474-3-PBS targets CD107b / LAMP2 as part of a matched antibody pair:

MP01356-2: 84474-3-PBS capture and 84474-4-PBS detection (validated in Cytometric bead array)

Unconjugated rabbit recombinant monoclonal antibody in PBS only (BSA and azide free) storage buffer at a concentration of 1 mg/mL, ready for conjugation. Created using Proteintech's proprietary in-house recombinant technology. Recombinant production enables unrivalled batch-to-batch consistency, easy scale-up, and future security of supply.

This conjugation ready format makes antibodies ideal for use in many applications including: ELISAs, multiplex assays requiring matched pairs, mass cytometry, and multiplex imaging applications. Antibody use should be optimized by the end user for each application and assay.

## Background Information

Lysosomal-associated membrane protein 2 (LAMP2, synonyms: LAMPB, CD107b) is a member of a family of membrane glycoproteins. This glycoprotein provides selectins with carbohydrate ligands. LAMP2 may play a role in tumor cell metastasis. It may also function in the protection, maintenance, and adhesion of the lysosome. Prior to posttranslational modification, LAMP2 is a ~45 kDa polypeptide. Mature, functional LAMP2 is extensively glycosylated with a variety of different N-linked and O-linked oligosaccharides.

## Storage

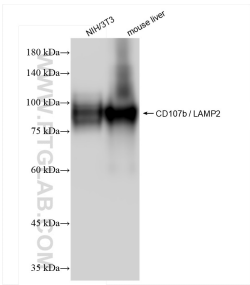
**Storage:**  
Store at -80°C.

**Storage Buffer:**  
PBS Only

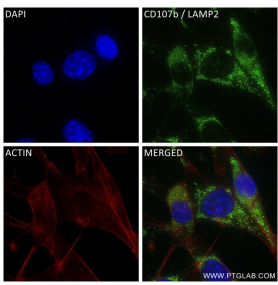
For technical support and original validation data for this product please contact:  
T: 1 (888) 4PTGLAB (1-888-478-4522) (toll free in USA), or 1(312) 455-8498 (outside USA)  
E: [proteintech@ptglab.com](mailto:proteintech@ptglab.com)  
W: [ptglab.com](http://ptglab.com)

This product is exclusively available under Proteintech Group brand and is not available to purchase from any other manufacturer.

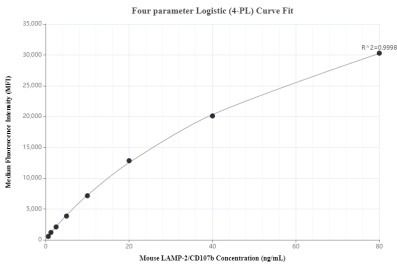
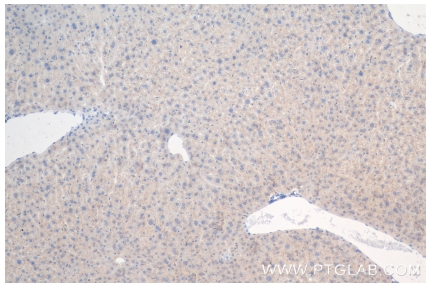
Selected Validation Data



Various lysates were subjected to SDS PAGE followed by western blot with 84474-3-RR (CD107b / LAMP2 antibody) at dilution of 1:5000 incubated at room temperature for 1.5 hours. This data was developed using the same antibody clone with 84474-3-PBS in a different storage buffer formulation.



Immunofluorescent analysis of (4% PFA) fixed NIH/3T3 cells using CD107b / LAMP2 antibody (84474-3-RR, Clone: 241893G7 ) at dilution of 1:400 and CoraLite® 488-Conjugated Goat Anti-Rabbit IgG(H+L) (SA00013-2), CL594-Phalloidin (red). This data was developed using the same antibody clone with 84474-3-PBS in a different storage buffer formulation.



Cytometric bead array standard curve of MP01356-2, MOUSE CD107b / LAMP2 Recombinant Matched Antibody Pair, PBS Only. Capture antibody: 84474-3-PBS. Detection antibody: 84474-4-PBS. Standard: Eg2029. Range: 0.625-80 ng/mL