

For Research Use Only

Mouse CD107b / LAMP2 Recombinant antibody, PBS Only (Detector)

Catalog Number: 84474-4-PBS



Basic Information

Catalog Number: 84474-4-PBS	GenBank Accession Number: NM_001017959.2	Purification Method: Protein A purification
Size: 100ug , Concentration: 1 mg/ml by Nanodrop;	GeneID (NCBI): 16784	CloneNo.: 241893A1
Source: Rabbit	UNIPROT ID: P17047-1	
Isotype: IgG	Full Name: lysosomal-associated membrane protein 2	
Immunogen Catalog Number: EG2029	Calculated MW: 46 kDa	

Applications

Tested Applications:
Cytometric bead array, Sandwich ELISA, Indirect ELISA, Sample test

Species Specificity:
mouse

Product Information

84474-4-PBS targets CD107b / LAMP2 as part of a matched antibody pair:

MP01356-1: 84474-1-PBS capture and 84474-4-PBS detection (validated in Cytometric bead array)

MP01356-2: 84474-3-PBS capture and 84474-4-PBS detection (validated in Cytometric bead array)

MP01356-4: 84474-2-PBS capture and 84474-4-PBS detection (validated in Sandwich ELISA)

Unconjugated rabbit recombinant monoclonal antibody in PBS only (BSA and azide free) storage buffer at a concentration of 1 mg/mL, ready for conjugation. Created using Proteintech's proprietary in-house recombinant technology. Recombinant production enables unrivalled batch-to-batch consistency, easy scale-up, and future security of supply.

This conjugation ready format makes antibodies ideal for use in many applications including: ELISAs, multiplex assays requiring matched pairs, mass cytometry, and multiplex imaging applications. Antibody use should be optimized by the end user for each application and assay.

Storage

Storage:
Store at -80°C.

Storage Buffer:
PBS only, pH7.3

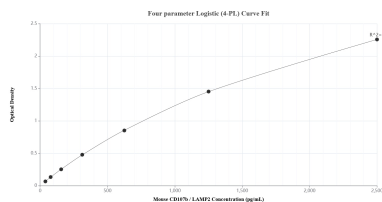
For technical support and original validation data for this product please contact:

T: 1 (888) 4PTGLAB (1-888-478-4522) (toll free in USA), or 1(312) 455-8498 (outside USA)

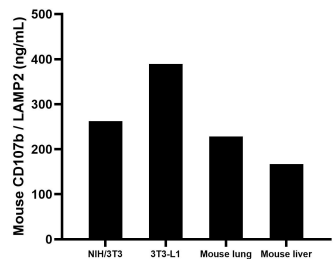
E: proteintech@ptglab.com
W: ptglab.com

This product is exclusively available under Proteintech Group brand and is not available to purchase from any other manufacturer.

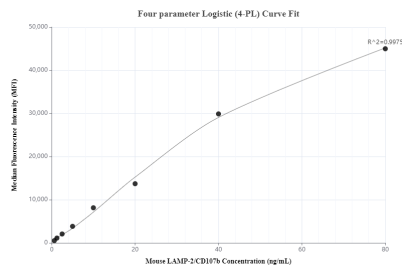
Selected Validation Data



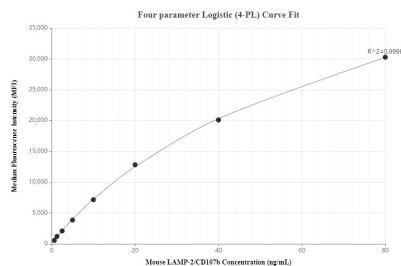
Sandwich ELISA standard curve of MP01356-4, Mouse CD107b / LAMP2 Recombinant Matched Antibody Pair - PBS only. 84474-2-PBS was coated to a plate as the capture antibody and incubated with serial dilutions of standard Eg2029. 84474-4-PBS was HRP conjugated as the detection antibody. Range: 39.1-2500 pg/mL



The mean CD107b / LAMP2 concentration was determined to be 262.0 ng/mL in NIH/3T3 cell extract based on a 3.3 mg/mL extract load, 389.6 ng/mL in 3T3-L1 cell extract based on a 1.3 mg/mL extract load, 228.1 ng/mL in mouse lung tissue extract based on a 1.3 mg/mL extract load and 166.9 ng/mL in mouse liver tissue extract based on a 1.3 mg/mL extract load.



Cytometric bead array standard curve of MP01356-1, MOUSE CD107b / LAMP2 Recombinant Matched Antibody Pair, PBS Only. Capture antibody: 84474-1-PBS. Detection antibody: 84474-4-PBS. Standard: Eg2029. Range: 0.625-80 ng/mL



Cytometric bead array standard curve of MP01356-2, MOUSE CD107b / LAMP2 Recombinant Matched Antibody Pair, PBS Only. Capture antibody: 84474-3-PBS. Detection antibody: 84474-4-PBS. Standard: Eg2029. Range: 0.625-80 ng/mL