

For Research Use Only

CSF1R Recombinant antibody, PBS Only (Capture)

Catalog Number: 84477-5-PBS



Basic Information

Catalog Number: 84477-5-PBS	GenBank Accession Number: BC047521	Purification Method: Protein A purification
Size: 100ug , Concentration: 1 mg/ml by Nanodrop;	GeneID (NCBI): 1436	CloneNo.: 241675G4
Source: Rabbit	UNIPROT ID: P07333	
Isotype: IgG	Full Name: colony stimulating factor 1 receptor	
	Calculated MW: 972 aa, 108 kDa	

Applications

Tested Applications:
Sandwich ELISA, Indirect ELISA, Sample test

Species Specificity:
human

Product Information

84477-5-PBS targets CSF1R as part of a matched antibody pair:

MP01340-4: 84477-5-PBS capture and 84477-4-PBS detection (validated in Sandwich ELISA)

Unconjugated rabbit recombinant monoclonal antibody in PBS only (BSA and azide free) storage buffer at a concentration of 1 mg/mL, ready for conjugation. Created using Proteintech's proprietary in-house recombinant technology. Recombinant production enables unrivalled batch-to-batch consistency, easy scale-up, and future security of supply.

This conjugation ready format makes antibodies ideal for use in many applications including: ELISAs, multiplex assays requiring matched pairs, mass cytometry, and multiplex imaging applications. Antibody use should be optimized by the end user for each application and assay.

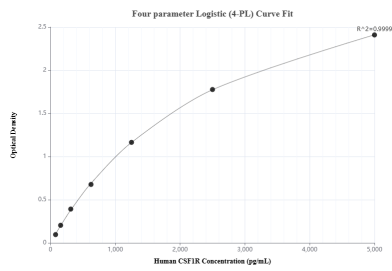
Storage

Storage:
Store at -80°C.
Storage Buffer:
PBS Only

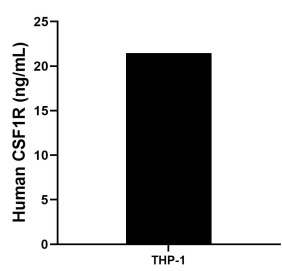
For technical support and original validation data for this product please contact:
T: 1 (888) 4PTGLAB (1-888-478-4522) (toll free in USA), or 1(312) 455-8498 (outside USA)
E: proteintech@ptglab.com
W: ptglab.com

This product is exclusively available under Proteintech Group brand and is not available to purchase from any other manufacturer.

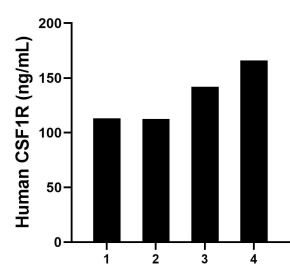
Selected Validation Data



Sandwich ELISA standard curve of MP01340-4, Humam CSF1R Recombinant Matched Antibody Pair - PBS only. 84477-5-PBS was coated to a plate as the capture antibody and incubated with serial dilutions of standard RP00001. 84477-4-PBS was HRP conjugated as the detection antibody. Range: 78.1-5000 pg/mL



The mean CSF1R concentration was determined to be 21.46 ng/mL in THP-1 cell extract based on a 4.8 mg/mL extract load.



Serum of four individual healthy human donors was measured. The human CSF1R concentration of detected samples was determined to be 133.41 ng/mL with a range of 112.57 - 165.97 ng/mL