

For Research Use Only

FKBP11 Recombinant antibody, PBS Only

Catalog Number: 84478-5-PBS



Basic Information

Catalog Number: 84478-5-PBS	GenBank Accession Number: BC027973	Purification Method: Protein A purification
Size: 100ug , Concentration: 1 mg/ml by Nanodrop;	GeneID (NCBI): 51303	CloneNo.: 241912G12
Source: Rabbit	UNIPROT ID: Q9NYL4	
Isotype: IgG	Full Name: FK506 binding protein 11, 19 kDa	
Immunogen Catalog Number: AG11368	Calculated MW: 201 aa, 22 kDa	
	Observed MW: 24 kDa	

Applications

Tested Applications:
WB, IF/ICC, Indirect ELISA

Species Specificity:
human, mouse, rat

Background Information

FKBP11 (FK506 binding protein 11, also named FKBP19) was first described as predominantly expressed in secretory tissues including the pancreas and recent studies have suggested a role in beta cell survival under conditions of ER stress (PMID: 35456020). In addition, FKBP11 appears to play a role in osteoblasts and bone formation where it has been observed to associate with interferon-inducible transmembrane protein 5 (IFITM5) (PMID: 24058703).

Storage

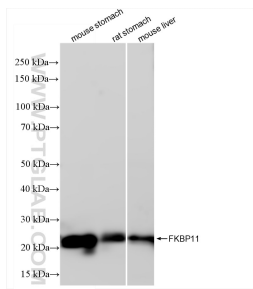
Storage:
Store at -80°C.

Storage Buffer:
PBS Only

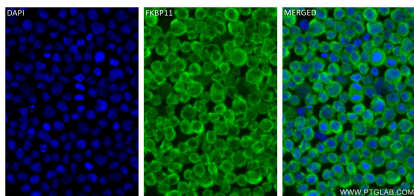
For technical support and original validation data for this product please contact:
T: 1 (888) 4PTGLAB (1-888-478-4522) (toll free in USA), or 1(312) 455-8498 (outside USA)
E: proteintech@ptglab.com
W: ptglab.com

This product is exclusively available under Proteintech Group brand and is not available to purchase from any other manufacturer.

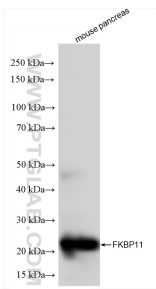
Selected Validation Data



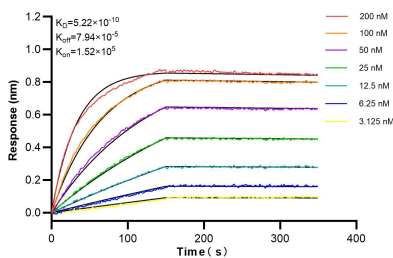
Various lysates were subjected to SDS PAGE followed by western blot with 84478-5-RR (FKBP11 antibody) at dilution of 1:10000 incubated at room temperature for 1.5 hours. This data was developed using the same antibody clone with 84478-5-PBS in a different storage buffer formulation.



Immunofluorescent analysis of (4% PFA) fixed Raji cells using FKBP11 antibody (84478-5-RR, Clone: 241912G12) at dilution of 1:250 and CoraLite® 488-Conjugated Goat Anti-Rabbit IgG(H+L) (SA00013-2). This data was developed using the same antibody clone with 84478-5-PBS in a different storage buffer formulation.



mouse pancreas tissue were subjected to SDS PAGE followed by western blot with 84478-5-RR (FKBP11 antibody) at dilution of 1:10000 incubated at room temperature for 1.5 hours. This data was developed using the same antibody clone with 84478-5-PBS in a different storage buffer formulation.



Biolayer interferometry (BLI) kinetic assays of 84478-5-RR against Human FKBP11 were performed. The affinity constant is 0.522 nM.