

For Research Use Only

# FKBP11 Recombinant antibody

Catalog Number: 84478-5-RR



## Basic Information

<b>Catalog Number:</b> 84478-5-RR	<b>GenBank Accession Number:</b> BC027973	<b>Purification Method:</b> Protein A purification
<b>Size:</b> 100ul , Concentration: 1000 ug/ml by Nanodrop;	<b>GeneID (NCBI):</b> 51303	<b>CloneNo.:</b> 241912G12
<b>Source:</b> Rabbit	<b>UNIPROT ID:</b> Q9NYL4	<b>Recommended Dilutions:</b> WB 1:5000-1:50000 IF/ICC 1:125-1:500
<b>Isotype:</b> IgG	<b>Full Name:</b> FK506 binding protein 11, 19 kDa	
<b>Immunogen Catalog Number:</b> AG11368	<b>Calculated MW:</b> 201 aa, 22 kDa	
	<b>Observed MW:</b> 24 kDa	

## Applications

<b>Tested Applications:</b> WB, IF/ICC, ELISA	<b>Positive Controls:</b>
<b>Species Specificity:</b> human, mouse, rat	<b>WB :</b> mouse stomach tissue, mouse pancreas tissue, rat stomach tissue, mouse liver tissue
	<b>IF/ICC :</b> Raji cells,

## Background Information

FKBP11 (FK506 binding protein 11, also named FKBP19) was first described as predominantly expressed in secretory tissues including the pancreas and recent studies have suggested a role in beta cell survival under conditions of ER stress (PMID: 35456020). In addition, FKBP11 appears to play a role in osteoblasts and bone formation where it has been observed to associate with interferon-inducible transmembrane protein 5 (IFITM5) (PMID: 24058703).

## Storage

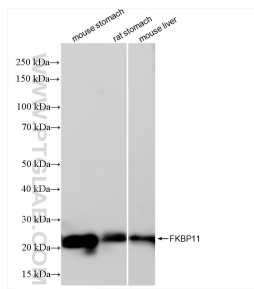
**Storage:**  
Store at -20°C. Stable for one year after shipment.  
**Storage Buffer:**  
PBS with 0.02% sodium azide and 50% glycerol pH 7.3.  
**Aliquoting is unnecessary for -20°C storage**

\*\*\* 20ul sizes contain 0.1% BSA

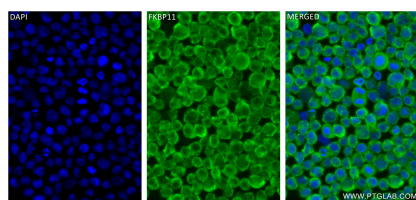
For technical support and original validation data for this product please contact:  
T: 1 (888) 4PTGLAB (1-888-478-4522) (toll free in USA), or 1(312) 455-8498 (outside USA)  
E: [proteintech@ptglab.com](mailto:proteintech@ptglab.com)  
W: [ptglab.com](http://ptglab.com)

This product is exclusively available under Proteintech Group brand and is not available to purchase from any other manufacturer.

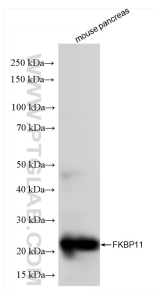
## Selected Validation Data



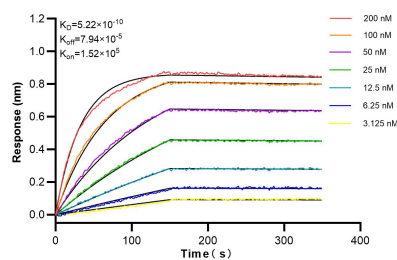
Various lysates were subjected to SDS PAGE followed by western blot with 84478-5-RR (FKBP11 antibody) at dilution of 1:10000 incubated at room temperature for 1.5 hours.



Immunofluorescent analysis of (4% PFA) fixed Raji cells using FKBP11 antibody (84478-5-RR, Clone: 241912G12) at dilution of 1:250 and CoraLite® 488-Conjugated Goat Anti-Rabbit IgG(H+L) (SA00013-2).



mouse pancreas tissue were subjected to SDS PAGE followed by western blot with 84478-5-RR (FKBP11 antibody) at dilution of 1:10000 incubated at room temperature for 1.5 hours.



Biolayer interferometry (BLI) kinetic assays of 84478-5-RR against Human FKBP11 were performed. The affinity constant is 0.522 nM.