

For Research Use Only

CKAP4 Recombinant antibody, PBS Only

Catalog Number: 84485-4-PBS



Basic Information

| | | |
|---|--|---|
| Catalog Number: 84485-4-PBS | GenBank Accession Number: BC082972 | Purification Method: Protein A purification |
| Size: 100ug , Concentration: 1 mg/ml by Nanodrop; | GeneID (NCBI): 10970 | CloneNo.: 241871B6 |
| Source: Rabbit | UNIPROT ID: Q07065 | |
| Isotype: IgG | Full Name: cytoskeleton-associated protein 4 | |
| Immunogen Catalog Number: AG10022 | Calculated MW: 602 aa, 66 kDa | |
| | Observed MW: 63 kDa | |

Applications

Tested Applications:
WB, IF/ICC, FC (Intra), Indirect ELISA

Species Specificity:
human

Background Information

CKAP4 (Cytoskeleton-associated protein 4), also known as CLIMP-63 (cytoskeleton-linking membrane protein 63), is a 63 kDa cytoskeleton-linking membrane protein. CKAP4 is a novel DKK1-binding protein on the cell surface membrane of Madin-Darby canine kidney (MDCK) epithelial cells, and evaluated CKAP4-mediated DKK1 signaling in cancer cell proliferation (PMID: 27322059). In addition, CKAP4 was modified with palmitate at Cys100 by palmitoyl acyltransferase DHHC2 (PMID: 18296695), and palmitoylation was required for CKAP4 localization to PM lipid rafts to promote cancer cell proliferation (PMID: 31744930).

Storage

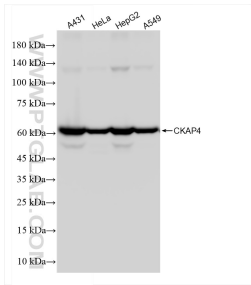
Storage:
Store at -80°C.

Storage Buffer:
PBS Only

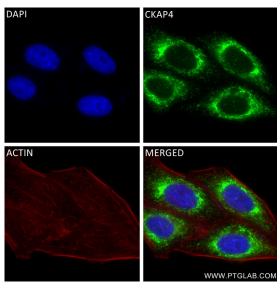
For technical support and original validation data for this product please contact:
T: 1 (888) 4PTGLAB (1-888-478-4522) (toll free in USA), or 1(312) 455-8498 (outside USA)
E: proteintech@ptglab.com
W: ptglab.com

This product is exclusively available under Proteintech Group brand and is not available to purchase from any other manufacturer.

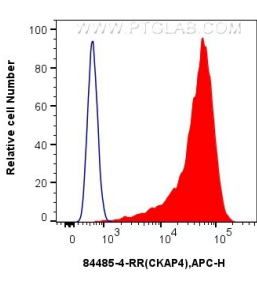
Selected Validation Data



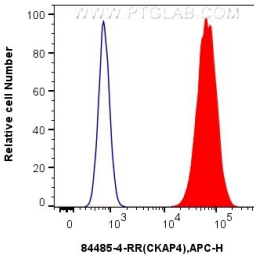
Various lysates were subjected to SDS PAGE followed by western blot with 84485-4-RR (CKAP4 antibody) at dilution of 1:10000 incubated at room temperature for 1.5 hours. This data was developed using the same antibody clone with 84485-4-PBS in a different storage buffer formulation.



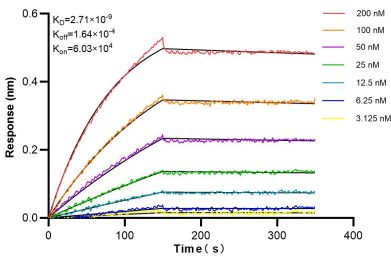
Immunofluorescent analysis of (4% PFA) fixed HepG2 cells using CKAP4 antibody (84485-4-RR, Clone: 241871B6) at dilution of 1:400 and CoraLite®488-Conjugated Goat Anti-Rabbit IgG(H+L) (SA00013-2), CL594-Phalloidin (red). This data was developed using the same antibody clone with 84485-4-PBS in a different storage buffer formulation.



1x10⁶ HeLa cells were intracellularly stained with 0.25 ug CKAP4 Recombinant antibody (84485-4-RR, Clone:241871B6) and APC-Conjugated Goat Anti-Rabbit IgG(H+L) (red), or 0.25 ug Rabbit IgG Isotype Control Recombinant Antibody (98136-1-RR, Clone: 240953C9) (blue). Cells were fixed with 4% PFA and permeabilized with Flow Cytometry Perm Buffer (PF00011-C). This data was developed using the same antibody clone with 84485-4-PBS in a different storage



1x10⁶ U2OS cells were intracellularly stained with 0.25 ug CKAP4 Recombinant antibody (84485-4-RR, Clone:241871B6) and APC-Conjugated Goat Anti-Rabbit IgG(H+L) (red), or 0.25 ug Rabbit IgG Isotype Control Recombinant Antibody (98136-1-RR, Clone: 240953C9) (blue). Cells were fixed with 4% PFA and permeabilized with Flow Cytometry Perm Buffer (PF00011-C). This data was developed using the same antibody clone with 84485-4-PBS in a different storage



Biolayer interferometry (BLI) kinetic assays of 84485-4-RR against Human CKAP4 were performed. The affinity constant is 2.71 nM.