

For Research Use Only

GINS2 Recombinant antibody, PBS Only (Capture)

Catalog Number: 84486-2-PBS



Basic Information

Catalog Number: 84486-2-PBS	GenBank Accession Number: BC010164	Purification Method: Protein A purification
Size: 100ug , Concentration: 1 mg/ml by Nanodrop;	GeneID (NCBI): 51659	CloneNo.: 241870E9
Source: Rabbit	UNIPROT ID: Q9Y248	
Isotype: IgG	Full Name: GINS complex subunit 2 (Psf2 homolog)	
Immunogen Catalog Number: AG9180	Calculated MW: 185 aa, 21 kDa	
	Observed MW: 20-25 kDa	

Applications

Tested Applications:
WB, IF/ICC, FC (Intra), Cytometric bead array, Indirect ELISA

Species Specificity:
human

Product Information

84486-2-PBS targets GINS2 as part of a matched antibody pair:

MP01325-1: 84486-2-PBS capture and 84486-1-PBS detection (validated in Cytometric bead array)

MP01325-2: 84486-2-PBS capture and 84486-3-PBS detection (validated in Cytometric bead array)

Unconjugated rabbit recombinant monoclonal antibody in PBS only (BSA and azide free) storage buffer at a concentration of 1 mg/mL, ready for conjugation. Created using Proteintech's proprietary in-house recombinant technology. Recombinant production enables unrivalled batch-to-batch consistency, easy scale-up, and future security of supply.

This conjugation ready format makes antibodies ideal for use in many applications including: ELISAs, multiplex assays requiring matched pairs, mass cytometry, and multiplex imaging applications. Antibody use should be optimized by the end user for each application and assay.

Background Information

GINS2, also named as DNA replication complex GINS protein PSF2, CGI-122, DC5, or HSPC037, is a 185 amino acid protein, which belongs to the GINS2/PSF2 family. The GINS complex plays an essential role in the initiation of DNA replication, and progression of DNA replication forks. GINS complex seems to bind preferentially to single-stranded DNA. GINS2 is a part of the the GINS complex, an integral component of the replicative helicase machinery that facilitates progression of the replisome complex.

Storage

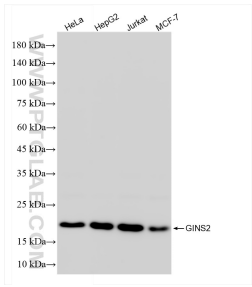
Storage:
Store at -80°C.

Storage Buffer:
PBS Only

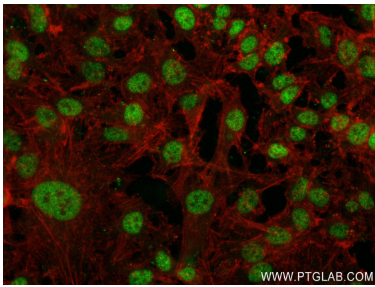
For technical support and original validation data for this product please contact:
T: 1 (888) 4PTGLAB (1-888-478-4522) (toll free in USA), or 1(312) 455-8498 (outside USA)
E: proteintech@ptglab.com
W: ptglab.com

This product is exclusively available under Proteintech Group brand and is not available to purchase from any other manufacturer.

Selected Validation Data

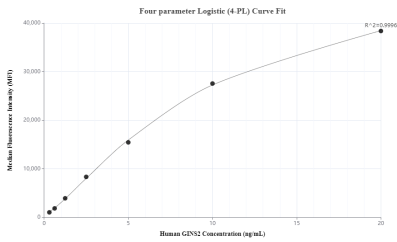


Various lysates were subjected to SDS PAGE followed by western blot with 84486-2-RR (GINS2 antibody) at dilution of 1:4000 incubated at room temperature for 1.5 hours. This data was developed using the same antibody clone with 84486-2-PBS in a different storage buffer formulation.

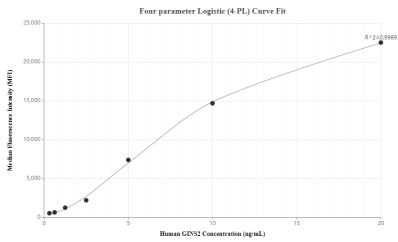


Immunofluorescent analysis of (4% PFA) fixed HeLa cells using GINS2 antibody (84486-2-RR, Clone: 241870E9) at dilution of 1:400 and CoraLite@488-Conjugated Goat Anti-Rabbit IgG(H+L) (SA00013-2), CL594-Phalloidin (red). This data was developed using the same antibody clone with 84486-2-PBS in a different storage buffer formulation.

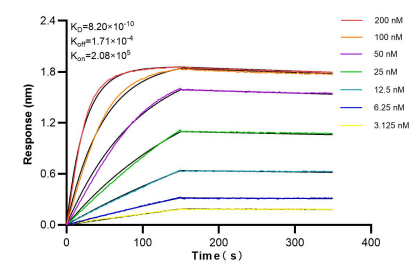
1x10⁶ Jurkat cells were intracellularly stained with 0.25 ug GINS2 Recombinant antibody (84486-2-RR, Clone:241870E9) and CoraLite@488-Conjugated Goat Anti-Rabbit IgG(H+L) (SA00013-2)(red), or 0.25 ug Rabbit IgG Isotype Control RecAb (98136-1-RR, Clone: 240953C9) (blue). Cells were fixed and permeabilized with Transcription Factor Staining Buffer Kit (PF00011). This data was developed using the same antibody clone with 84486-2-PBS in a different storage



Cytometric bead array standard curve of MP01325-1, GINS2 Recombinant Matched Antibody Pair, PBS Only. Capture antibody: 84486-2-PBS. Detection antibody: 84486-1-PBS. Standard: Ag9180. Range: 0.313-20 ng/mL



Cytometric bead array standard curve of MP01325-2, GINS2 Recombinant Matched Antibody Pair, PBS Only. Capture antibody: 84486-2-PBS. Detection antibody: 84486-3-PBS. Standard: Ag9180. Range: 0.313-20 ng/mL



Biolayer interferometry (BLI) kinetic assays of 84486-2-RR against Human GINS2 were performed. The affinity constant is 0.82 nM.