

For Research Use Only

GINS2 Recombinant antibody

Catalog Number: 84486-2-RR



Basic Information

Catalog Number: 84486-2-RR	GenBank Accession Number: BC010164	Purification Method: Protein A purification
Size: 100ul , Concentration: 1000 µg/ml by Nanodrop;	GeneID (NCBI): 51659	CloneNo.: 241870E9
Source: Rabbit	UNIPROT ID: Q9Y248	Recommended Dilutions: WB 1:1000-1:8000 IF/ICC 1:200-1:800
Isotype: IgG	Full Name: GINS complex subunit 2 (Psf2 homolog)	
Immunogen Catalog Number: AG9180	Calculated MW: 185 aa, 21 kDa	
	Observed MW: 20-25 kDa	

Applications

Tested Applications: WB, IF/ICC, FC (Intra), ELISA	Positive Controls:
Species Specificity: human	WB : HeLa cells, IF/ICC : HeLa cells,

Background Information

GINS2, also named as DNA replication complex GINS protein PSF2, CGI-122, DC5, or HSPC037, is a 185 amino acid protein, which belongs to the GINS2/PSF2 family. The GINS complex plays an essential role in the initiation of DNA replication, and progression of DNA replication forks. GINS complex seems to bind preferentially to single-stranded DNA. GINS2 is a part of the the GINS complex, an integral component of the replicative helicase machinery that facilitates progression of the replisome complex.

Storage

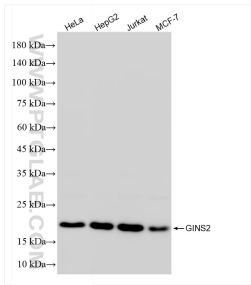
Storage:
Store at -20°C. Stable for one year after shipment.
Storage Buffer:
PBS with 0.02% sodium azide and 50% glycerol pH 7.3.
Aliquoting is unnecessary for -20°C storage

*** 20ul sizes contain 0.1% BSA

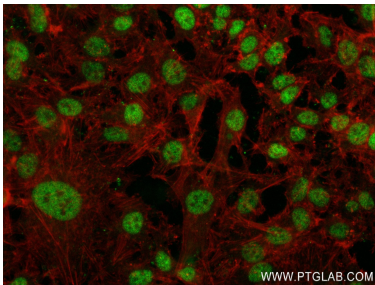
For technical support and original validation data for this product please contact:
T: 1 (888) 4PTGLAB (1-888-478-4522) (toll free in USA), or 1(312) 455-8498 (outside USA)
E: proteintech@ptglab.com
W: ptglab.com

This product is exclusively available under Proteintech Group brand and is not available to purchase from any other manufacturer.

Selected Validation Data



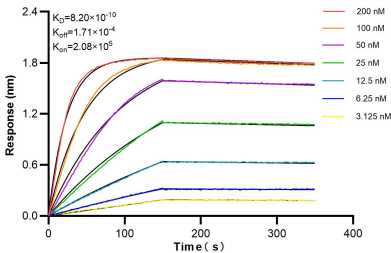
Various lysates were subjected to SDS PAGE followed by western blot with 84486-2-RR (GINS2 antibody) at dilution of 1:4000 incubated at room temperature for 1.5 hours.



Immunofluorescent analysis of (4% PFA) fixed HeLa cells using GINS2 antibody (84486-2-RR, Clone: 241870E9) at dilution of 1:400 and CoraLite®488-Conjugated Goat Anti-Rabbit IgG(H+L) (SA00013-2), CL594-Phalloidin (red).



1x10⁶ Jurkat cells were intracellularly stained with 0.25 ug GINS2 Recombinant antibody (84486-2-RR, Clone:241870E9) and CoraLite®488-Conjugated Goat Anti-Rabbit IgG(H+L) (SA00013-2) (red), or 0.25 ug Rabbit IgG Isotype Control RecAb (98136-1-RR, Clone: 240953C9) (blue). Cells were fixed and permeabilized with Transcription Factor Staining Buffer Kit (PF00011).



Bioluminescence resonance transfer (BLI) kinetic assays of 84486-2-RR against Human GINS2 were performed. The affinity constant is 0.82 nM.