

For Research Use Only

# BAFF/TNFSF13B Recombinant antibody, PBS Only (Detector)

Catalog Number: 84487-2-PBS



## Basic Information

**Catalog Number:**

84487-2-PBS

**Size:**

100ug, Concentration: 1 mg/ml by  
Nanodrop;

**Source:**

Rabbit

**Isotype:**

IgG

**GenBank Accession Number:**

BC020674

**GeneID (NCBI):**

10673

**UNIPROT ID:**

Q9Y275-1

**Full Name:**

tumor necrosis factor (ligand)  
superfamily, member 13b

**Calculated MW:**

32 kDa

**Purification Method:**

Protein A purification

**CloneNo.:**

241846D12

## Applications

**Tested Applications:**

Cytometric bead array, Sandwich ELISA, Indirect ELISA,  
Sample test

**Species Specificity:**

human

## Product Information

84487-2-PBS targets BAFF/TNFSF13B as part of a matched antibody pair:

MP01318-1: 84487-1-PBS capture and 84487-2-PBS detection (validated in Cytometric bead array)

MP01318-2: 84487-3-PBS capture and 84487-2-PBS detection (validated in Cytometric bead array)

MP01318-3: 84487-4-PBS capture and 84487-2-PBS detection (validated in Sandwich ELISA)

Unconjugated rabbit recombinant monoclonal antibody in PBS only (BSA and azide free) storage buffer at a concentration of 1 mg/mL, ready for conjugation. Created using Proteintech's proprietary in-house recombinant technology. Recombinant production enables unrivalled batch-to-batch consistency, easy scale-up, and future security of supply.

This conjugation ready format makes antibodies ideal for use in many applications including: ELISAs, multiplex assays requiring matched pairs, mass cytometry, and multiplex imaging applications. Antibody use should be optimized by the end user for each application and assay.

## Storage

**Storage:**

Store at -80°C.

**Storage Buffer:**

PBS Only

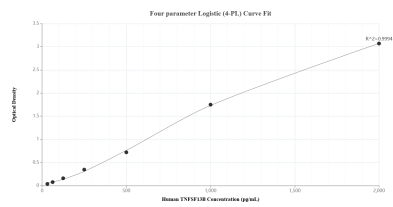
For technical support and original validation data for this product please contact:

T: 1 (888) 4PTGLAB (1-888-478-4522) (toll free  
in USA), or 1(312) 455-8498 (outside USA)

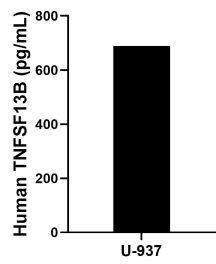
E: [proteintech@ptglab.com](mailto:proteintech@ptglab.com)  
W: [ptglab.com](http://ptglab.com)

This product is exclusively available under Proteintech Group brand and is not available to purchase from any other manufacturer.

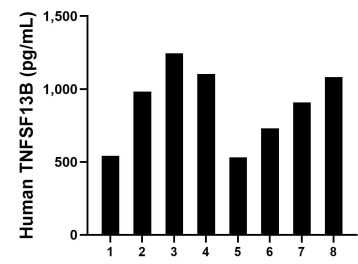
Selected Validation Data



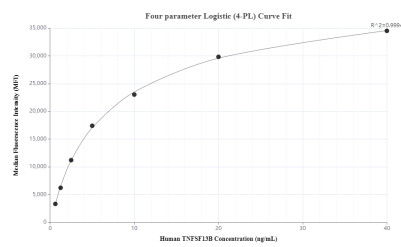
Sandwich ELISA standard curve of MP01318-3, Human BAFF/TNFSF13B Recombinant Matched Antibody Pair - PBS only. 84487-4-PBS was coated to a plate as the capture antibody and incubated with serial dilutions of standard Eg1970. 84487-2-PBS was HRP conjugated as the detection antibody. Range: 31.25-2000 pg/mL



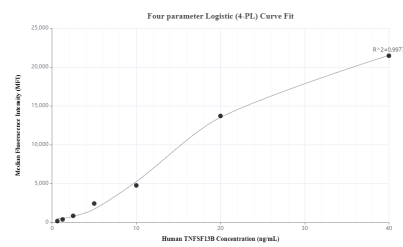
U-937 were cultured in DMEM supplemented with 10% fetal bovine serum, 2.5 mM L-glutamine, 100 U/mL penicillin, and 100 µg/mL streptomycin sulfate. An aliquot of the cell culture supernate was removed, assayed for human BAFF/TNFSF13B, and measured 689.3 pg/mL



Serum of eight individual healthy human donors was measured. The BAFF/TNFSF13B concentration of detected samples was determined to be 890.6 pg/mL with a range of 531.1-1,244.5 pg/mL



Cytometric bead array standard curve of MP01318-1, BAFF/TNFSF13B Recombinant Matched Antibody Pair, PBS Only. Capture antibody: 84487-1-PBS. Detection antibody: 84487-2-PBS. Standard: Eg1970. Range: 0.625-40 ng/mL



Cytometric bead array standard curve of MP01318-2, BAFF/TNFSF13B Recombinant Matched Antibody Pair, PBS Only. Capture antibody: 84487-3-PBS. Detection antibody: 84487-2-PBS. Standard: Eg1970. Range: 0.625-40 ng/mL