

For Research Use Only

Mouse EMMPRIN/CD147 Recombinant antibody, PBS Only (Detector)

Catalog Number: 84488-4-PBS



Basic Information

Catalog Number: 84488-4-PBS	GenBank Accession Number: NM_009768.2	Purification Method: Protein A purification
Size: 100ug , Concentration: 1 mg/ml by Nanodrop;	GeneID (NCBI): 12215	CloneNo.: 241852H7
Source: Rabbit	UNIPROT ID: P18572-1	
Isotype: IgG	Full Name: basigin	
	Calculated MW: 42kDa	

Applications

Tested Applications:
Cytometric bead array, Sandwich ELISA, Indirect ELISA, Sample test

Species Specificity:
mouse

Product Information

84488-4-PBS targets EMMPRIN/CD147 as part of a matched antibody pair:

MP01320-1: 84488-2-PBS capture and 84488-4-PBS detection (validated in Cytometric bead array)

MP01320-3: 84488-3-PBS capture and 84488-4-PBS detection (validated in Cytometric bead array)

MP01320-4: 84488-5-PBS capture and 84488-4-PBS detection (validated in Sandwich ELISA)

Unconjugated rabbit recombinant monoclonal antibody in PBS only (BSA and azide free) storage buffer at a concentration of 1 mg/mL, ready for conjugation. Created using Proteintech's proprietary in-house recombinant technology. Recombinant production enables unrivalled batch-to-batch consistency, easy scale-up, and future security of supply.

This conjugation ready format makes antibodies ideal for use in many applications including: ELISAs, multiplex assays requiring matched pairs, mass cytometry, and multiplex imaging applications. Antibody use should be optimized by the end user for each application and assay.

Storage

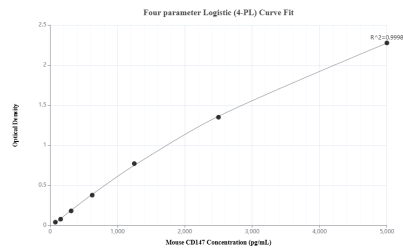
Storage:
Store at -80°C.

Storage Buffer:
PBS Only

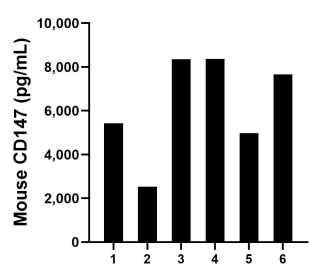
For technical support and original validation data for this product please contact:
T: 1 (888) 4PTGLAB (1-888-478-4522) (toll free in USA), or 1(312) 455-8498 (outside USA)
E: proteintech@ptglab.com
W: ptglab.com

This product is exclusively available under Proteintech Group brand and is not available to purchase from any other manufacturer.

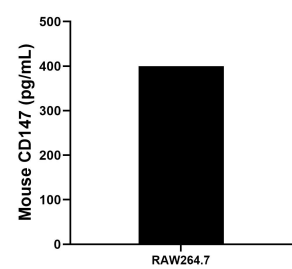
Selected Validation Data



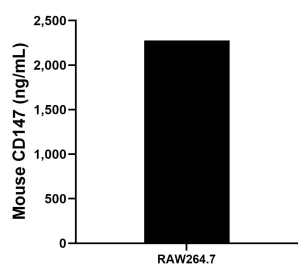
Sandwich ELISA standard curve of MP01320-4, Mouse CD147 Recombinant Matched Antibody Pair - PBS only. 84488-5-PBS was coated to a plate as the capture antibody and incubated with serial dilutions of standard Eg1530. 84488-4-PBS was HRP conjugated as the detection antibody. Range: 78.1-5000 pg/mL



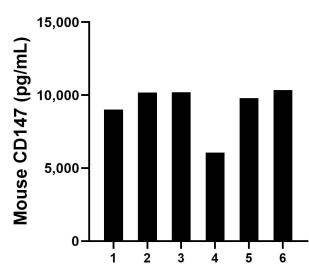
Urine of six mice was measured. The mouse CD147 concentration of detected samples was determined to be 6,220.5 pg/mL with a range of 2,528.0 - 8372.5 pg/mL



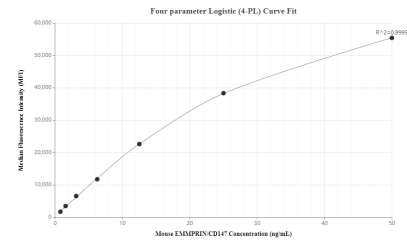
RAW264.7 cells were cultured in DMEM supplemented with 10% fetal bovine serum. An aliquot of the cell culture supernate was removed, assayed for mouse CD147, and measured 400.0 pg/mL



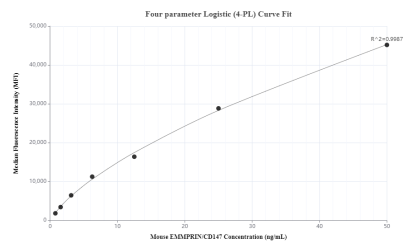
The mean CD147 concentration was determined to be 2,277.8 ng/mL in RAW264.7 cell extract based on a 4.8 mg/mL extract load.



Serum of six mice was measured. The mouse CD147 concentration of detected samples was determined to be 9,267.4 pg/mL with a range of 6,072.1 - 10,344.1 pg/mL



Cytometric bead array standard curve of MP01320-1, MOUSE CD147 Recombinant Matched Antibody Pair, PBS Only. Capture antibody: 84488-2-PBS. Detection antibody: 84488-4-PBS. Standard: Eg1530. Range: 0.781-50 ng/mL



Cytometric bead array standard curve of MP01320-3, MOUSE CD147 Recombinant Matched Antibody Pair, PBS Only. Capture antibody: 84488-3-PBS. Detection antibody: 84488-4-PBS. Standard: Eg1530. Range: 0.781-50 ng/mL