

For Research Use Only

Mouse EPCAM/CD326 Recombinant antibody, PBS Only (Capture)

Catalog Number: 84490-2-PBS



Basic Information

Catalog Number:

84490-2-PBS

Size:

100ug, Concentration: 1 mg/ml by Nanodrop;

Source:

Rabbit

Isotype:

IgG

GenBank Accession Number:

NM_008532.2

GeneID (NCBI):

17075

UNIPROT ID:

Q99JW5

Full Name:

epithelial cell adhesion molecule

Calculated MW:

35 kDa

Observed MW:

35 kDa, 40 kDa

Purification Method:

Protein A purification

CloneNo.:

241851E11

Applications

Tested Applications:

WB, IHC, Cytometric bead array, Sandwich ELISA, Indirect ELISA, Sample test

Species Specificity:

mouse

Product Information

84490-2-PBS targets EPCAM/CD326 as part of a matched antibody pair:

MP01344-1: 84490-2-PBS capture and 84490-3-PBS detection (validated in Cytometric bead array, Sandwich ELISA)

MP01344-2: 84490-2-PBS capture and 84490-1-PBS detection (validated in Cytometric bead array)

Unconjugated rabbit recombinant monoclonal antibody in PBS only (BSA and azide free) storage buffer at a concentration of 1 mg/mL, ready for conjugation. Created using Proteintech's proprietary in-house recombinant technology. Recombinant production enables unrivalled batch-to-batch consistency, easy scale-up, and future security of supply.

This conjugation ready format makes antibodies ideal for use in many applications including: ELISAs, multiplex assays requiring matched pairs, mass cytometry, and multiplex imaging applications. Antibody use should be optimized by the end user for each application and assay.

Background Information

Epithelial cell adhesion molecule (EPCAM, CD326) is a type I transmembrane glycoprotein that functions as a homophilic, epithelial-specific intercellular cell-adhesion molecule. In addition to cell adhesion, EPCAM is also involved in cellular signaling, cell migration, proliferation, and differentiation. EPCAM is highly expressed on most carcinomas and therefore of potential use as a diagnostic and prognostic marker for a variety of carcinomas, and has become a therapeutic target. EPCAM may occur in distinct forms due to glycosylation. (PMID: 20837599; 19249674; 21576002; 22647938; 12691820)

Storage

Storage:

Store at -80°C.

Storage Buffer:

PBS only, pH7.3

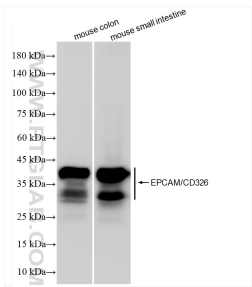
For technical support and original validation data for this product please contact:

T: 1 (888) 4PTGLAB (1-888-478-4522) (toll free in USA), or 1(312) 455-8498 (outside USA)

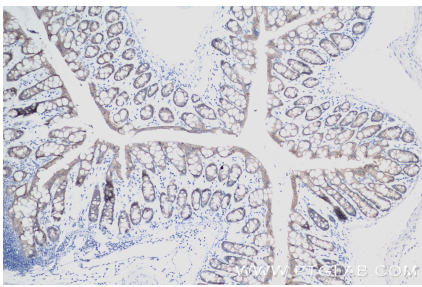
E: proteintech@ptglab.com
W: ptglab.com

This product is exclusively available under Proteintech Group brand and is not available to purchase from any other manufacturer.

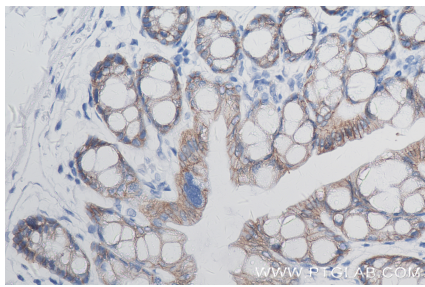
Selected Validation Data



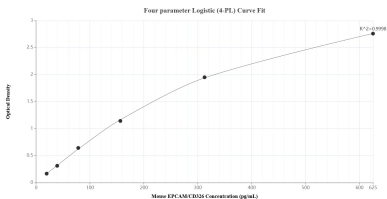
Various lysates were subjected to SDS PAGE followed by western blot with 84490-2-RR (EpCAM/TROP1 antibody) at dilution of 1:10000 incubated at room temperature for 1.5 hours. This data was developed using the same antibody clone with 84490-2-PBS in a different storage buffer formulation.



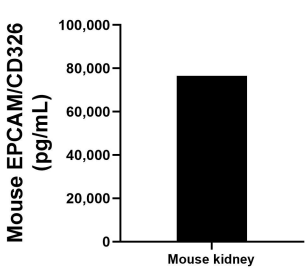
Immunohistochemical analysis of paraffin-embedded mouse colon tissue slide using 84490-2-RR (EPCAM/CD326 antibody) at dilution of 1:800 (under 10x lens). Heat mediated antigen retrieval with Tris-EDTA buffer (pH 9.0). This data was developed using the same antibody clone with 84490-2-PBS in a different storage buffer formulation.



Immunohistochemical analysis of paraffin-embedded mouse colon tissue slide using 84490-2-RR (EPCAM/CD326 antibody) at dilution of 1:800 (under 40x lens). Heat mediated antigen retrieval with Tris-EDTA buffer (pH 9.0). This data was developed using the same antibody clone with 84490-2-PBS in a different storage buffer formulation.



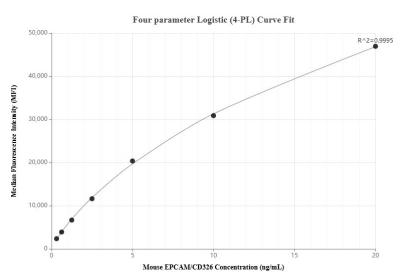
Sandwich ELISA standard curve of MP01344-1, Mouse EPCAM/CD326 Recombinant Matched Antibody Pair - PBS only. 84490-2-PBS was coated to a plate as the capture antibody and incubated with serial dilutions of standard Eg1883. 84490-3-PBS was HRP conjugated as the detection antibody. Range: 19.5-625 pg/mL



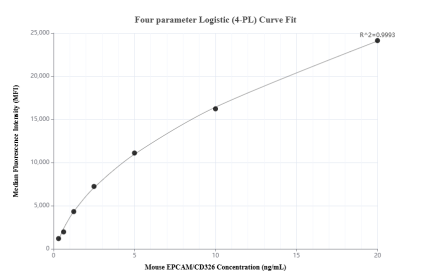
The mean EPCAM/CD326 concentration was determined to be 76,517.6 pg/mL in mouse kidney tissue extract based on a 3.1 mg/mL extract load.

Immunofluorescent analysis of (4% PFA) fixed paraffin-embedded mouse colon tissue using EPCAM/CD326 antibody (84490-2-RR, Clone: 241851E11) at dilution of 1:200 and CoraLite®594-Conjugated Goat Anti-Rabbit IgG(H+L) (SA00013-4). Heat mediated antigen retrieval with Tris-EDTA buffer (pH 9.0). This data was developed using the same antibody clone with 84490-2-PBS in a different storage buffer formulation.

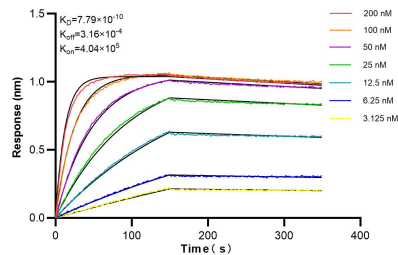
Immunofluorescent analysis of (4% PFA) fixed paraffin-embedded mouse small intestine tissue using EPCAM/CD326 antibody (84490-2-RR, Clone: 241851E11) at dilution of 1:200 and CoraLite®594-Conjugated Goat Anti-Rabbit IgG(H+L) (SA00013-4). Heat mediated antigen retrieval with Tris-EDTA buffer (pH 9.0). This data was developed using the same antibody clone with 84490-2-PBS in a different storage buffer formulation.



Cytometric bead array standard curve of MP01344-1, MOUSE EPCAM/CD326 Recombinant Matched Antibody Pair, PBS Only. Capture antibody: 84490-2-PBS. Detection antibody: 84490-3-PBS. Standard: Eg1883. Range: 0.313-20 ng/mL



Cytometric bead array standard curve of MP01344-2, MOUSE EPCAM/CD326 Recombinant Matched Antibody Pair, PBS Only. Capture antibody: 84490-2-PBS. Detection antibody: 84490-1-PBS. Standard: Eg1883. Range: 0.313-20 ng/mL



Biolayer interferometry (BLI) kinetic assays of 84490-2-RR against Mouse EPCAM/CD326 were performed. The affinity constant is 0.779 nM.