

For Research Use Only

EPCAM/CD326 Recombinant antibody

Catalog Number: 84490-2-RR



Basic Information

Catalog Number:	84490-2-RR	GenBank Accession Number:	NM_008532.2	Purification Method:	Protein A purification
Size:	100ul , Concentration: 1000 µg/ml by Nanodrop;	GeneID (NCBI):	17075	CloneNo.:	241851E11
Source:	Rabbit	UNIPROT ID:	Q99JW5	Recommended Dilutions:	WB 1:5000-1:50000 IHC 1:400-1:1600
Isotype:	IgG	Full Name:	epithelial cell adhesion molecule		
		Calculated MW:	35 kDa		
		Observed MW:	35 kDa, 40 kDa		

Applications

Tested Applications:	WB, IHC, ELISA	Positive Controls:	
Species Specificity:	mouse	WB :	mouse colon tissue, mouse small intestine tissue
		IHC :	mouse colon tissue, mouse small intestine tissue
Note-IHC: suggested antigen retrieval with TE buffer pH 9.0; (*) Alternatively, antigen retrieval may be performed with citrate buffer pH 6.0			

Background Information

Epithelial cell adhesion molecule (EpCAM, CD326) is a type I transmembrane glycoprotein that functions as a homophilic, epithelial-specific intercellular cell-adhesion molecule. In addition to cell adhesion, EpCAM is also involved in cellular signaling, cell migration, proliferation, and differentiation. EpCAM is highly expressed on most carcinomas and therefore of potential use as a diagnostic and prognostic marker for a variety of carcinomas, and has become a therapeutic target. EpCAM may occur in distinct forms due to glycosylation. (PMID: 20837599; 19249674; 21576002; 22647938; 12691820)

Storage

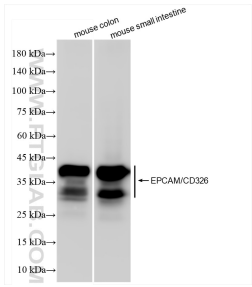
Storage:
Store at -20°C. Stable for one year after shipment.
Storage Buffer:
PBS with 0.02% sodium azide and 50% glycerol pH 7.3.
Aliquoting is unnecessary for -20°C storage

*** 20ul sizes contain 0.1% BSA

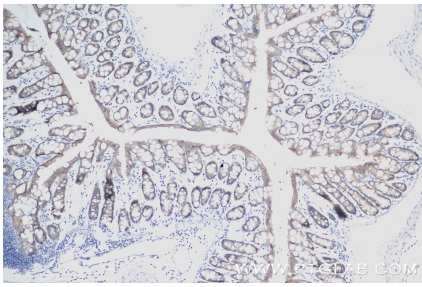
For technical support and original validation data for this product please contact:
T: 1 (888) 4PTGLAB (1-888-478-4522) (toll free in USA), or 1(312) 455-8498 (outside USA)
E: proteintech@ptglab.com
W: ptglab.com

This product is exclusively available under Proteintech Group brand and is not available to purchase from any other manufacturer.

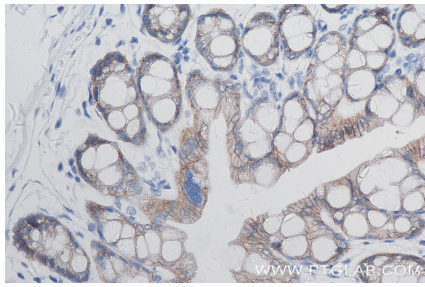
Selected Validation Data



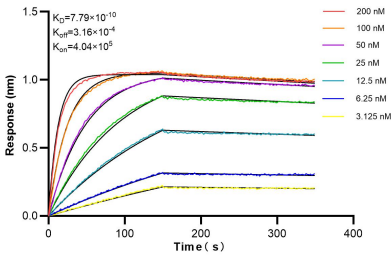
Various lysates were subjected to SDS PAGE followed by western blot with 84490-2-RR (EpCAM/TROP1 antibody) at dilution of 1:10000 incubated at room temperature for 1.5 hours.



Immunohistochemical analysis of paraffin-embedded mouse colon tissue slide using 84490-2-RR (EPCAM/CD326 antibody) at dilution of 1:800 (under 10x lens). Heat mediated antigen retrieval with Tris-EDTA buffer (pH 9.0).



Immunohistochemical analysis of paraffin-embedded mouse colon tissue slide using 84490-2-RR (EPCAM/CD326 antibody) at dilution of 1:800 (under 40x lens). Heat mediated antigen retrieval with Tris-EDTA buffer (pH 9.0).



Biolayer interferometry (BLI) kinetic assays of 84490-2-RR against Mouse EPCAM/CD326 were performed. The affinity constant is 0.779 nM.