

For Research Use Only

Mouse EPCR/CD201 Recombinant antibody, PBS Only (Capture)

Catalog Number: 84494-2-PBS



Basic Information

Catalog Number: 84494-2-PBS	GenBank Accession Number: NM_011171.2	Purification Method: Protein A purification
Size: 100ug , Concentration: 1 mg/ml by Nanodrop;	GeneID (NCBI): 19124	CloneNo.: 241853A9
Source: Rabbit	UNIPROT ID: Q64695	
Isotype: IgG	Full Name: protein C receptor, endothelial	
Immunogen Catalog Number: EG1517	Calculated MW: 27kDa	
	Observed MW: 40-50 kDa	

Applications

Tested Applications:
WB, IF-P, Cytometric bead array, Sandwich ELISA, Indirect ELISA, Sample test

Species Specificity:
mouse

Product Information

84494-2-PBS targets EPCR/CD201 as part of a matched antibody pair:

MP01323-3: 84494-2-PBS capture and 84494-3-PBS detection (validated in Cytometric bead array, Sandwich ELISA)

Unconjugated rabbit recombinant monoclonal antibody in PBS only (BSA and azide free) storage buffer at a concentration of 1 mg/mL, ready for conjugation. Created using Proteintech's proprietary in-house recombinant technology. Recombinant production enables unrivalled batch-to-batch consistency, easy scale-up, and future security of supply.

This conjugation ready format makes antibodies ideal for use in many applications including: ELISAs, multiplex assays requiring matched pairs, mass cytometry, and multiplex imaging applications. Antibody use should be optimized by the end user for each application and assay.

Background Information

Protein C receptor (PROCR), also known as activated protein C receptor (APC receptor), EPCR, or CD201, is a transmembrane glycoprotein. EPCR promotes the activation of protein C, which has anticoagulant and cytoprotective effects. EPCR facilitates the activation of protein C by the thrombin-thrombomodulin complex but also facilitates APC-mediated cytoprotective impact on cells that involve the activation of protease-activated receptors (PAR) 1 and 3 (PMID: 27207424).

Storage

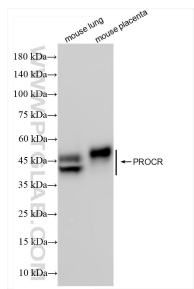
Storage:
Store at -80°C.

Storage Buffer:
PBS only, pH7.3

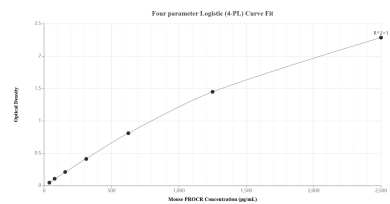
For technical support and original validation data for this product please contact:
T: 1 (888) 4PTGLAB (1-888-478-4522) (toll free in USA), or 1(312) 455-8498 (outside USA)
E: proteintech@ptglab.com
W: ptglab.com

This product is exclusively available under Proteintech Group brand and is not available to purchase from any other manufacturer.

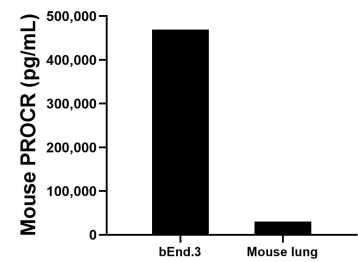
Selected Validation Data



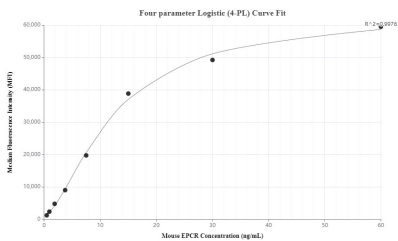
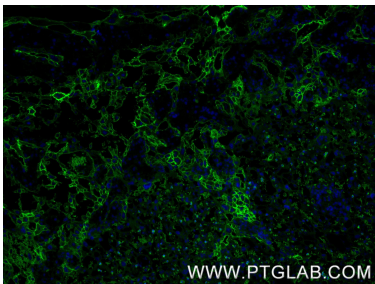
Various lysates were subjected to SDS PAGE followed by western blot with 84494-2-RR (EPCR/CD201 antibody) at dilution of 1:10000 incubated at room temperature for 1.5 hours. This data was developed using the same antibody clone with 84494-2-PBS in a different storage buffer formulation.



Sandwich ELISA standard curve of MP01323-3, Mouse PROCR Recombinant Matched Antibody Pair - PBS only. 84494-2-PBS was coated to a plate as the capture antibody and incubated with serial dilutions of standard Eg1517. 84494-3-PBS was HRP conjugated as the detection antibody. Range: 39.1-2500 pg/mL.



The mean PROCR concentration was determined to be 469,591.3 pg/mL in bEnd.3 cell extract based on a 1.8 mg/mL extract load and 30,645.7 pg/mL in mouse lung tissue extract based on a 1.6 mg/mL extract load.



Cytometric bead array standard curve of MP01323-3, MOUSE EPCR Recombinant Matched Antibody Pair, PBS Only. Capture antibody: 84494-2-PBS. Detection antibody: 84494-3-PBS. Standard: Eg1517. Range: 0.469-60 ng/mL.