

For Research Use Only

# EPCR/CD201 Recombinant antibody

Catalog Number: 84494-2-RR



## Basic Information

<b>Catalog Number:</b> 84494-2-RR	<b>GenBank Accession Number:</b> NM_011171.2	<b>Purification Method:</b> Protein A purification
<b>Size:</b> 100ul , Concentration: 1000 µg/ml by Nanodrop;	<b>GeneID (NCBI):</b> 19124	<b>CloneNo.:</b> 241853A9
<b>Source:</b> Rabbit	<b>UNIPROT ID:</b> Q64695	<b>Recommended Dilutions:</b> WB: 1:5000-1:50000 IF-P: 1:200-1:800
<b>Isotype:</b> IgG	<b>Full Name:</b> protein C receptor, endothelial	
<b>Immunogen Catalog Number:</b> EG1517	<b>Calculated MW:</b> 27kDa	
	<b>Observed MW:</b> 40-50 kDa	

## Applications

<b>Tested Applications:</b> WB, IF-P, ELISA	<b>Positive Controls:</b>
<b>Species Specificity:</b> mouse	<b>WB :</b> mouse lung tissue, mouse placenta tissue <b>IF-P :</b> mouse placenta tissue,

## Background Information

Protein C receptor (PROCR), also known as activated protein C receptor (APC receptor), EPCR, or CD201, is a transmembrane glycoprotein. EPCR promotes the activation of protein C, which has anticoagulant and cytoprotective effects. EPCR facilitates the activation of protein C by the thrombin-thrombomodulin complex but also facilitates APC-mediated cytoprotective impact on cells that involve the activation of protease-activated receptors (PAR) 1 and 3(PMID: 27207424).

## Storage

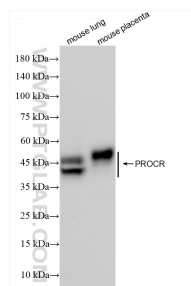
**Storage:**  
Store at -20°C. Stable for one year after shipment.  
**Storage Buffer:**  
PBS with 0.02% sodium azide and 50% glycerol, pH7.3  
**Aliquoting is unnecessary for -20°C storage**

\*\*\* 20ul sizes contain 0.1% BSA

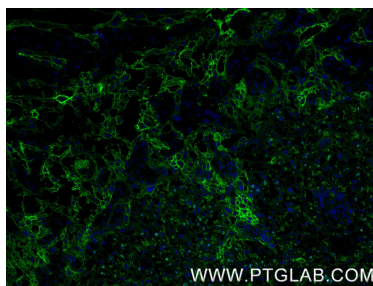
For technical support and original validation data for this product please contact:  
T: 1 (888) 4PTGLAB (1-888-478-4522) (toll free in USA), or 1(312) 455-8498 (outside USA)  
E: [proteintech@ptglab.com](mailto:proteintech@ptglab.com)  
W: [ptglab.com](http://ptglab.com)

This product is exclusively available under Proteintech Group brand and is not available to purchase from any other manufacturer.

## Selected Validation Data



Various lysates were subjected to SDS PAGE followed by western blot with 84494-2-RR (EPCR/CD201 antibody) at dilution of 1:10000 incubated at room temperature for 1.5 hours.



Immunofluorescent analysis of (4% PFA) fixed paraffin-embedded mouse placenta tissue using EPCR/CD201 antibody (84494-2-RR, Clone: 241853A9 ) at dilution of 1:400 and CoraLite®488-Conjugated Goat Anti-Rabbit IgG(H+L) (SA00013-2). Heat mediated antigen retrieval with Tris-EDTA buffer (pH 9.0).