

For Research Use Only

# LMO7 Recombinant antibody, PBS Only (Capture/Detector)

Catalog Number: 84495-1-PBS



## Basic Information

Catalog Number:	84495-1-PBS	GenBank Accession Number:	NM_005358	Purification Method:	Protein A purification
Size:	100ug , Concentration: 1 mg/ml by Nanodrop;	GeneID (NCBI):	4008	CloneNo.:	241781C9
Source:	Rabbit	UNIPROT ID:	Q8WWI1		
Isotype:	IgG	Full Name:	LIM domain 7		
Immunogen Catalog Number:	AG30016	Calculated MW:	193 kDa		

## Applications

**Tested Applications:**  
Cytometric bead array, Sandwich ELISA, Indirect ELISA, Sample test

**Species Specificity:**  
human

## Product Information

84495-1-PBS targets LMO7 as part of a matched antibody pair:

MP01336-1: 84495-1-PBS capture and 84495-3-PBS detection (validated in Cytometric bead array)

MP01336-2: 84495-2-PBS capture and 84495-1-PBS detection (validated in Cytometric bead array)

MP01336-4: 84495-4-PBS capture and 84495-1-PBS detection (validated in Sandwich ELISA)

Unconjugated rabbit recombinant monoclonal antibody in PBS only (BSA and azide free) storage buffer at a concentration of 1 mg/mL, ready for conjugation. Created using Proteintech's proprietary in-house recombinant technology. Recombinant production enables unrivalled batch-to-batch consistency, easy scale-up, and future security of supply.

This conjugation ready format makes antibodies ideal for use in many applications including: ELISAs, multiplex assays requiring matched pairs, mass cytometry, and multiplex imaging applications. Antibody use should be optimized by the end user for each application and assay.

## Storage

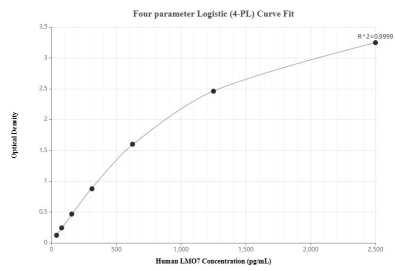
**Storage:**  
Store at -80°C.

**Storage Buffer:**  
PBS Only

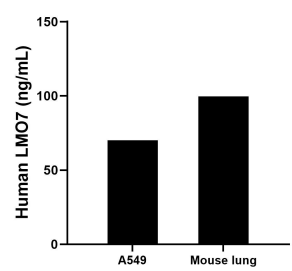
For technical support and original validation data for this product please contact:  
T: 1 (888) 4PTGLAB (1-888-478-4522) (toll free in USA), or 1(312) 455-8498 (outside USA)  
E: [proteintech@ptglab.com](mailto:proteintech@ptglab.com)  
W: [ptglab.com](http://ptglab.com)

This product is exclusively available under Proteintech Group brand and is not available to purchase from any other manufacturer.

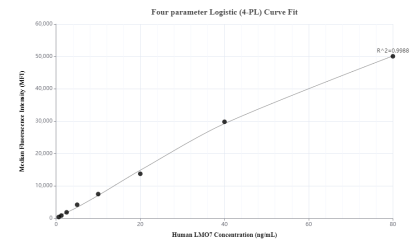
## Selected Validation Data



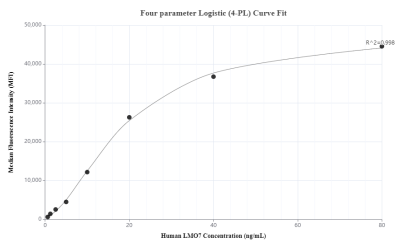
Sandwich ELISA standard curve of MP01336-4, Human LMO7 Recombinant Matched Antibody Pair - PBS only. 84495-4-PBS was coated to a plate as the capture antibody and incubated with serial dilutions of standard Ag30016. 84495-1-PBS was HRP conjugated as the detection antibody. Range: 39.1-2500 pg/mL



The mean LMO7 concentration was determined to be 70.01 ng/mL in A549 cell extract based on a 2.5 mg/mL extract load and 99.53 ng/mL in mouse lung tissue extract based on a 1.6 mg/mL extract load.



Cytometric bead array standard curve of MP01336-1, LMO7 Recombinant Matched Antibody Pair, PBS Only. Capture antibody: 84495-1-PBS. Detection antibody: 84495-3-PBS. Standard: Ag30016. Range: 0.625-80 ng/mL



Cytometric bead array standard curve of MP01336-2, LMO7 Recombinant Matched Antibody Pair, PBS Only. Capture antibody: 84495-2-PBS. Detection antibody: 84495-1-PBS. Standard: Ag30016. Range: 0.625-80 ng/mL