

For Research Use Only

# LMO7 Recombinant antibody, PBS Only (Capture)

Catalog Number: 84495-4-PBS



## Basic Information

<b>Catalog Number:</b> 84495-4-PBS	<b>GenBank Accession Number:</b> NM_005358	<b>Purification Method:</b> Protein A purification
<b>Size:</b> 100ug , Concentration: 1 mg/ml by Nanodrop;	<b>GeneID (NCBI):</b> 4008	<b>CloneNo.:</b> 241781D11
<b>Source:</b> Rabbit	<b>UNIPROT ID:</b> Q8WWI1	
<b>Isotype:</b> IgG	<b>Full Name:</b> LIM domain 7	
<b>Immunogen Catalog Number:</b> AG30016	<b>Calculated MW:</b> 193 kDa	
	<b>Observed MW:</b> 150 kDa, 180 kDa	

## Applications

**Tested Applications:**  
WB, Sandwich ELISA, Indirect ELISA, Sample test

**Species Specificity:**  
human

## Product Information

84495-4-PBS targets LMO7 as part of a matched antibody pair:

MP01336-4: 84495-4-PBS capture and 84495-1-PBS detection (validated in Sandwich ELISA)

Unconjugated rabbit recombinant monoclonal antibody in PBS only (BSA and azide free) storage buffer at a concentration of 1 mg/mL, ready for conjugation. Created using Proteintech's proprietary in-house recombinant technology. Recombinant production enables unrivalled batch-to-batch consistency, easy scale-up, and future security of supply.

This conjugation ready format makes antibodies ideal for use in many applications including: ELISAs, multiplex assays requiring matched pairs, mass cytometry, and multiplex imaging applications. Antibody use should be optimized by the end user for each application and assay.

## Background Information

LMO7, also known as LOMP, FBX20, belongs to the single Calponin-homology (CH) domain-containing protein family, with a single actin-binding CH domain at the amino terminal end (PMID: 19459066). LMO7 also contains a PDZ domain and a carboxyl-terminal LIM domain, both of which have been described as protein-protein interacting domains (PMID: 15140894). LMO7 encodes three splice variants of calculated molecular weights of 196 kDa (P200), 157 kDa (P150), and 100 kDa (P100) (PMID: 26157009).

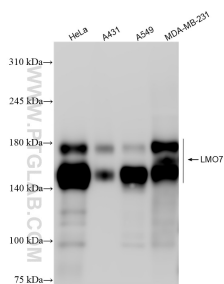
## Storage

**Storage:**  
Store at -80°C.  
**Storage Buffer:**  
PBS Only

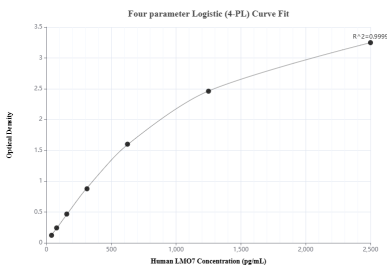
For technical support and original validation data for this product please contact:  
T: 1 (888) 4PTGLAB (1-888-478-4522) (toll free in USA), or 1(312) 455-8498 (outside USA)  
E: [proteintech@ptglab.com](mailto:proteintech@ptglab.com)  
W: [ptglab.com](http://ptglab.com)

This product is exclusively available under Proteintech Group brand and is not available to purchase from any other manufacturer.

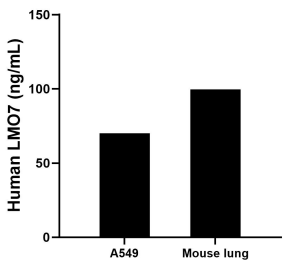
## Selected Validation Data



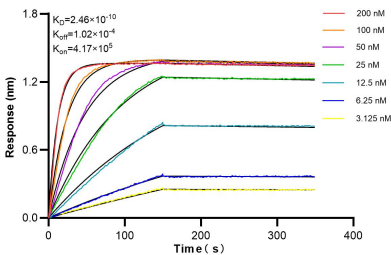
Various lysates were subjected to SDS PAGE followed by western blot with 84495-4-RR (LMO7 antibody) at dilution of 1:10000 incubated at room temperature for 1.5 hours. This data was developed using the same antibody clone with 84495-4-PBS in a different storage buffer formulation.



Sandwich ELISA standard curve of MP01336-4, Human LMO7 Recombinant Matched Antibody Pair - PBS only. 84495-4-PBS was coated to a plate as the capture antibody and incubated with serial dilutions of standard Ag30016. 84495-1-PBS was HRP conjugated as the detection antibody. Range: 39.1-2500 pg/mL



The mean LMO7 concentration was determined to be 70.01 ng/mL in A549 cell extract based on a 2.5 mg/mL extract load and 99.53 ng/mL in mouse lung tissue extract based on a 1.6 mg/mL extract load.



Bioluminescence resonance energy transfer (BRET) kinetic assays of 84495-4-RR against Human LMO7 were performed. The affinity constant is 0.246 nM.