

For Research Use Only

Mouse RBP4 Recombinant antibody, PBS Only (Capture)

Catalog Number: 84503-1-PBS



Basic Information

Catalog Number: 84503-1-PBS	GenBank Accession Number: NM_011255.3	Purification Method: Protein A purification
Size: 100ug , Concentration: 1 mg/ml by Nanodrop;	GeneID (NCBI): 19662	CloneNo.: 242040A5
Source: Rabbit	UNIPROT ID: Q00724	
Isotype: IgG	Full Name: retinol binding protein 4, plasma	
Immunogen Catalog Number: EG1140	Calculated MW: 23kDa	

Applications

Tested Applications:
Cytometric bead array, Sandwich ELISA, Indirect ELISA,
Sample test

Species Specificity:
mouse

Product Information

84503-1-PBS targets RBP4 as part of a matched antibody pair:

MP01365-1: 84503-1-PBS capture and 84503-3-PBS detection (validated in Cytometric bead array, Sandwich ELISA)

MP01365-2: 84503-1-PBS capture and 84503-2-PBS detection (validated in Cytometric bead array)

Unconjugated rabbit recombinant monoclonal antibody in PBS only (BSA and azide free) storage buffer at a concentration of 1 mg/mL, ready for conjugation. Created using Proteintech's proprietary in-house recombinant technology. Recombinant production enables unrivalled batch-to-batch consistency, easy scale-up, and future security of supply.

This conjugation ready format makes antibodies ideal for use in many applications including: ELISAs, multiplex assays requiring matched pairs, mass cytometry, and multiplex imaging applications. Antibody use should be optimized by the end user for each application and assay.

Storage

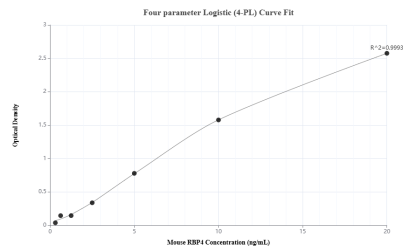
Storage:
Store at -80°C.

Storage Buffer:
PBS only, pH7.3

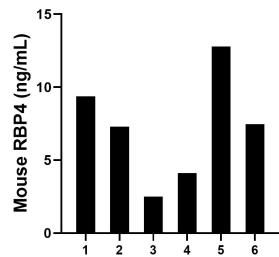
For technical support and original validation data for this product please contact:
T: 1 (888) 4PTGLAB (1-888-478-4522) (toll free in USA), or 1(312) 455-8498 (outside USA)
E: proteintech@ptglab.com
W: ptglab.com

This product is exclusively available under Proteintech Group brand and is not available to purchase from any other manufacturer.

Selected Validation Data



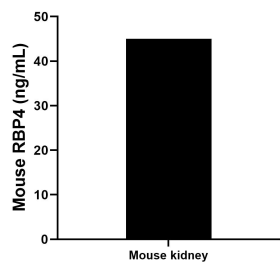
Sandwich ELISA standard curve of MP01365-1, Mouse RBP4 Recombinant Matched Antibody Pair - PBS only. 84503-1-PBS was coated to a plate as the capture antibody and incubated with serial dilutions of standard Eg1140. 84503-3-PBS was HRP conjugated as the detection antibody. Range: 0.313-20 ng/mL



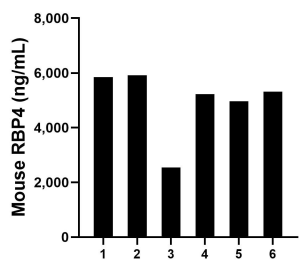
Urine of six mice was measured. The mouse RBP4 concentration of detected samples was determined to be 7.25 ng/mL with a range of 2.50 - 12.78 ng/mL.



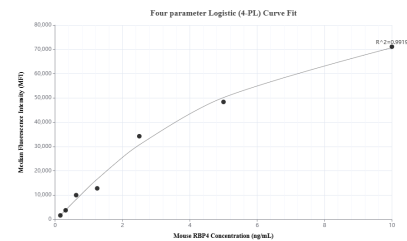
Mouse kidney tissue from one adult mouse (chopped in 1-2 mm pieces in 30 mL of medium) was cultured in RPMI supplemented with 10% fetal calfserum and 50 μ M β -mercaptoethanol. Aliquots of the cell culture supernates were removed, assayed for levels of mouse RBP4, and measured 14.68 ng/mL.



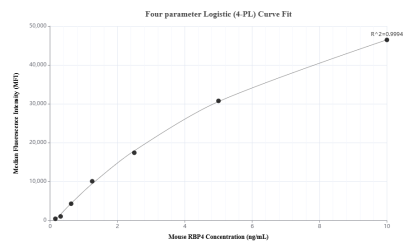
The mean RBP4 concentration was determined to be 45.00 ng/mL in mouse kidney tissue extract based on a 1.9 mg/mL extract load.



Serum of six mice was measured. The mouse RBP4 concentration of detected samples was determined to be 4,970.53 ng/mL with a range of 2,551.06 - 5,913.45 ng/mL.



Cytometric bead array standard curve of MP01365-1, MOUSE RBP4 Recombinant Matched Antibody Pair, PBS Only. Capture antibody: 84503-1-PBS. Detection antibody: 84503-3-PBS. Standard: Eg1140. Range: 0.156-10 ng/mL.



Cytometric bead array standard curve of MP01365-2, MOUSE RBP4 Recombinant Matched Antibody Pair, PBS Only. Capture antibody: 84503-1-PBS. Detection antibody: 84503-2-PBS. Standard: Eg1140. Range: 0.156-10 ng/mL.