

For Research Use Only

# Mouse RBP4 Recombinant antibody, PBS Only (Detector)

Catalog Number: 84503-3-PBS



## Basic Information

<b>Catalog Number:</b> 84503-3-PBS	<b>GenBank Accession Number:</b> NM_011255.3	<b>Purification Method:</b> Protein A purification
<b>Size:</b> 100ug , Concentration: 1 mg/ml by Nanodrop;	<b>GeneID (NCBI):</b> 19662	<b>CloneNo.:</b> 242040G5
<b>Source:</b> Rabbit	<b>UNIPROT ID:</b> Q00724	
<b>Isotype:</b> IgG	<b>Full Name:</b> retinol binding protein 4, plasma	
<b>Immunogen Catalog Number:</b> EG1140	<b>Calculated MW:</b> 23kDa	

## Applications

**Tested Applications:**  
Cytometric bead array, Sandwich ELISA, Indirect ELISA,  
Sample test

**Species Specificity:**  
mouse

## Product Information

84503-3-PBS targets RBP4 as part of a matched antibody pair:

MP01365-1: 84503-1-PBS capture and 84503-3-PBS detection (validated in Cytometric bead array, Sandwich ELISA)

Unconjugated rabbit recombinant monoclonal antibody in PBS only (BSA and azide free) storage buffer at a concentration of 1 mg/mL, ready for conjugation. Created using Proteintech's proprietary in-house recombinant technology. Recombinant production enables unrivalled batch-to-batch consistency, easy scale-up, and future security of supply.

This conjugation ready format makes antibodies ideal for use in many applications including: ELISAs, multiplex assays requiring matched pairs, mass cytometry, and multiplex imaging applications. Antibody use should be optimized by the end user for each application and assay.

## Storage

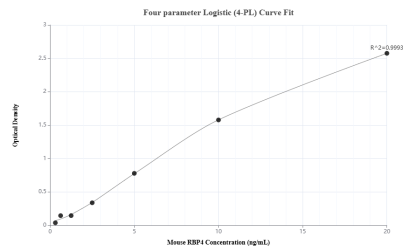
**Storage:**  
Store at -80°C.

**Storage Buffer:**  
PBS only, pH7.3

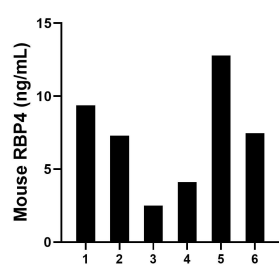
For technical support and original validation data for this product please contact:  
T: 1 (888) 4PTGLAB (1-888-478-4522) (toll free in USA), or 1(312) 455-8498 (outside USA)  
E: [proteintech@ptglab.com](mailto:proteintech@ptglab.com)  
W: [ptglab.com](http://ptglab.com)

This product is exclusively available under Proteintech Group brand and is not available to purchase from any other manufacturer.

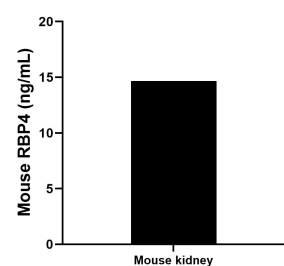
Selected Validation Data



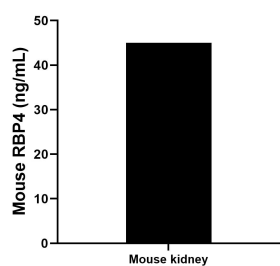
Sandwich ELISA standard curve of MP01365-1, Mouse RBP4 Recombinant Matched Antibody Pair - PBS only. 84503-1-PBS was coated to a plate as the capture antibody and incubated with serial dilutions of standard Eg1140. 84503-3-PBS was HRP conjugated as the detection antibody. Range: 0.313-20 ng/mL



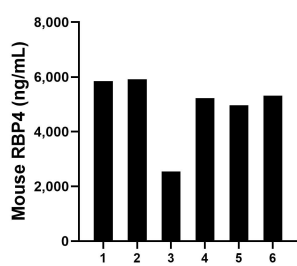
Urine of six mice was measured. The mouse RBP4 concentration of detected samples was determined to be 7.25 ng/mL with a range of 2.50 - 12.78 ng/mL



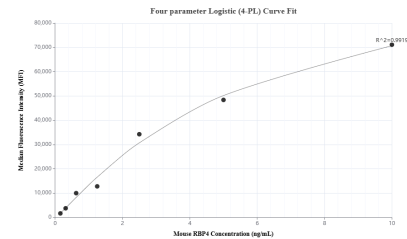
Mouse kidney tissue from one adult mouse (chopped in 1-2 mm pieces in 30 mL of medium) was cultured in RPMI supplemented with 10% fetal calfserum and 50 µM β-mercaptoethanol. Aliquots of the cell culture supernates were removed, assayed for levels of mouse RBP4, and measured 14.68 ng/mL



The mean RBP4 concentration was determined to be 45.00 ng/mL in mouse kidney tissue extract based on a 1.9 mg/mL extract load.



Serum of six mice was measured. The mouse RBP4 concentration of detected samples was determined to be 4,970.53 ng/mL with a range of 2,551.06 - 5,913.45 ng/mL



Cytometric bead array standard curve of MP01365-1, MOUSE RBP4 Recombinant Matched Antibody Pair, PBS Only. Capture antibody: 84503-1-PBS. Detection antibody: 84503-3-PBS. Standard: Eg1140. Range: 0.156-10 ng/mL