

For Research Use Only

# MCM2 Recombinant antibody, PBS Only

Catalog Number: 84511-5-PBS



## Basic Information

**Catalog Number:**

84511-5-PBS

**Size:**

100ug , Concentration: 1 mg/ml by Nanodrop;

**Source:**

Rabbit

**Isotype:**

IgG

**Immunogen Catalog Number:**

AG0798

**GenBank Accession Number:**

BC007670

**GeneID (NCBI):**

4171

**UNIPROT ID:**

P49736

**Full Name:**

minichromosome maintenance complex component 2

**Calculated MW:**

102 kDa

**Observed MW:**

116-125 kDa

**Purification Method:**

Protein A purification

**CloneNo.:**

241968F7

## Applications

**Tested Applications:**

WB, IHC, IF/ICC, Indirect ELISA

**Species Specificity:**

human, mouse, rat

## Background Information

The MCM2-7 complex forms the core of the replicative helicase which acts as the molecular motor that uses ATP binding and hydrolysis to fuel the unwinding of double-stranded DNA at the replication fork in eukaryotes. This complex is the putative replicative helicase essential for 'once per cell cycle' DNA replication initiation and elongation in eukaryotic cells. MCM2, also named CDCL1 and BM28, is a human nuclear protein that plays an important role in 2 crucial steps of the cell cycle, namely, onset of DNA replication and cell division.

## Storage

**Storage:**

Store at -80°C.

**Storage Buffer:**

PBS Only

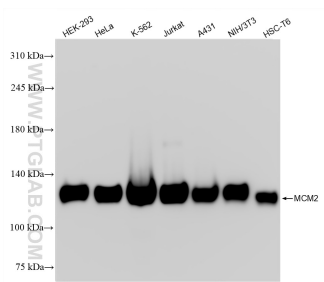
For technical support and original validation data for this product please contact:

T: 1 (888) 4PTGLAB (1-888-478-4522) (toll free in USA), or 1(312) 455-8498 (outside USA)

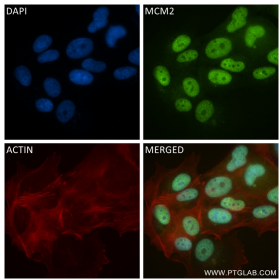
E: [proteintech@ptglab.com](mailto:proteintech@ptglab.com)  
W: [ptglab.com](http://ptglab.com)

This product is exclusively available under Proteintech Group brand and is not available to purchase from any other manufacturer.

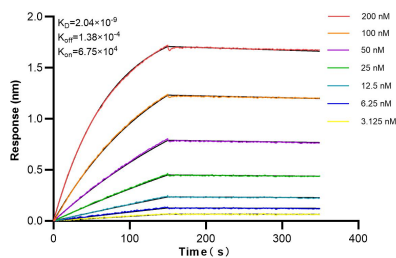
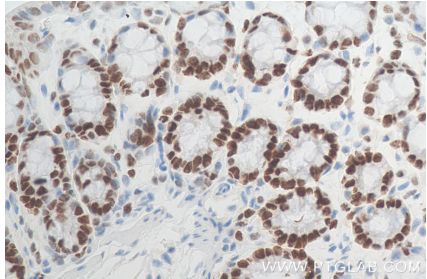
## Selected Validation Data



Various lysates were subjected to SDS PAGE followed by western blot with 84511-5-RR (MCM2 antibody) at dilution of 1:5000 incubated at room temperature for 1.5 hours. This data was developed using the same antibody clone with 84511-5-PBS in a different storage buffer formulation.



Immunofluorescent analysis of (4% PFA) fixed MCF-7 cells using MCM2 antibody (84511-5-RR, Clone: 241968F7 ) at dilution of 1:500 and CoraLite®488-Conjugated Goat Anti-Rabbit IgG(H+L) (SA00013-2), CL594-Phalloidin (red). This data was developed using the same antibody clone with 84511-5-PBS in a different storage buffer formulation.



Biolayer interferometry (BLI) kinetic assays of 84511-5-RR against Human MCM2 were performed. The affinity constant is 2.04 nM.