

For Research Use Only

MCM2 Recombinant antibody

Catalog Number: 84511-5-RR



Basic Information

Catalog Number: 84511-5-RR	GenBank Accession Number: BC007670	Purification Method: Protein A purification
Size: 100ul , Concentration: 1000 ug/ml by Nanodrop;	GeneID (NCBI): 4171	CloneNo.: 241968F7
Source: Rabbit	UNIPROT ID: P49736	Recommended Dilutions: WB 1:2000-1:10000 IHC 1:500-1:2000 IF/ICC 1:250-1:1000
Isotype: IgG	Full Name: minichromosome maintenance complex component 2	
Immunogen Catalog Number: AG0798	Calculated MW: 102 kDa	
	Observed MW: 116-125 kDa	

Applications

Tested Applications: WB, IHC, IF/ICC, ELISA	Positive Controls:
Species Specificity: human, mouse, rat	WB : HEK-293 cells, HeLa cells, K-562 cells, Jurkat cells, A431 cells, NIH/3T3 cells, HSC-T6 cells
Note-IHC: suggested antigen retrieval with TE buffer pH 9.0; (*) Alternatively, antigen retrieval may be performed with citrate buffer pH 6.0	IHC : mouse colon tissue, human cervical squamous cancer tissue, human colon cancer tissue, human placenta tissue, mouse small intestine tissue
	IF/ICC : MCF-7 cells, HeLa cells

Background Information

The MCM2-7 complex forms the core of the replicative helicase which acts as the molecular motor that uses ATP binding and hydrolysis to fuel the unwinding of double-stranded DNA at the replication fork in eukaryotes. This complex is the putative replicative helicase essential for 'once per cell cycle' DNA replication initiation and elongation in eukaryotic cells. MCM2, also named CDCL1 and BM28, is a human nuclear protein that plays an important role in 2 crucial steps of the cell cycle, namely, onset of DNA replication and cell division.

Storage

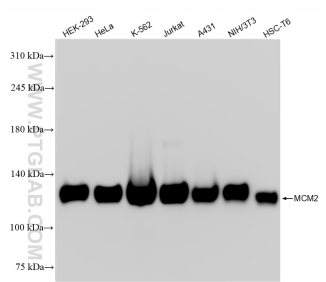
Storage:
Store at -20°C. Stable for one year after shipment.
Storage Buffer:
PBS with 0.02% sodium azide and 50% glycerol pH 7.3.
Aliquoting is unnecessary for -20°C storage

*** 20ul sizes contain 0.1% BSA

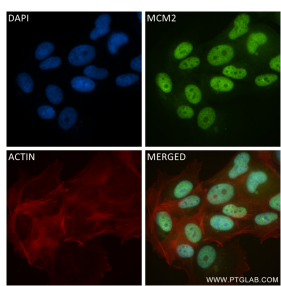
For technical support and original validation data for this product please contact:
T: 1 (888) 4PTGLAB (1-888-478-4522) (toll free in USA), or 1(312) 455-8498 (outside USA)
E: proteintech@ptglab.com
W: ptglab.com

This product is exclusively available under Proteintech Group brand and is not available to purchase from any other manufacturer.

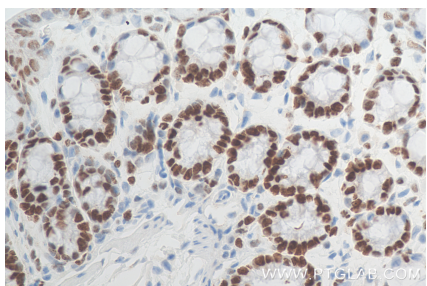
Selected Validation Data



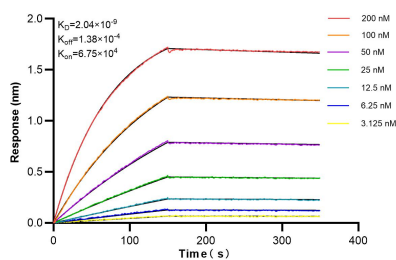
Various lysates were subjected to SDS PAGE followed by western blot with 84511-5-RR (MCM2 antibody) at dilution of 1:5000 incubated at room temperature for 1.5 hours.



Immunofluorescent analysis of (4% PFA) fixed MCF-7 cells using MCM2 antibody (84511-5-RR, Clone: 241968F7) at dilution of 1:500 and CoraLite®488-Conjugated Goat Anti-Rabbit IgG(H+L) (SA00013-2), CL594-Phalloidin (red).



Immunohistochemical analysis of paraffin-embedded mouse colon tissue slide using 84511-5-RR (MCM2 antibody) at dilution of 1:1000 (under 40x lens). Heat mediated antigen retrieval with Tris-EDTA buffer (pH 9.0).



Biolayer interferometry (BLI) kinetic assays of 84511-5-RR against Human MCM2 were performed. The affinity constant is 2.04 nM.